

1982 OLDSMOBILE



TORONADO • NINETY-EIGHT • DELTA 88 • WAGONS

Even in these
practical times, there's still
room to do it with style.

You know times have changed. And you know cars have changed with the times. It had to be. Yet you can't help wondering... "In today's world of more practical cars, more space-efficient cars, isn't there still room for some of the old romance, the old excitement?"

On the following pages, you'll find cars that bring back the romance and excitement. You'll find 1982 Oldsmobiles that combine form and function so ingeniously they ease both the mind and the body, while invigorating the spirit.

At Oldsmobile, there's still room to do it with style.

We've been doing it longer than anyone. Since 1897. Did you know Oldsmobile is America's oldest maker of cars?

That Oldsmobile introduced both the first fully automatic transmission and the first high-compression V8 engine in America?

That Oldsmobile developed a modern American front-wheel-drive system so popular today—back in 1965?

And that Oldsmobile offered the first American cars with a diesel V8 engine?

In short, cars that meet ever-changing needs is what Oldsmobile has been offering for 85 years.

Here we go again!

Introducing the 1982 Cutlass Ciera! Cutlass Supreme already is America's most popular mid-size car, thanks to its styling, ride, comfort and value.

Now along comes Cutlass Ciera to broaden that Cutlass appeal for more of today's economy-minded drivers.

First of all, Cutlass Ciera is a new kind of car that a lot of people have been looking for. Those sleek, aerodynamic lines are designed to cut through the wind, while helping you cut down on fuel bills.

It's the first Cutlass ever with front-wheel drive. That means flatter floors and impressive

is, you couldn't get a diesel V8 automobile before 1977. Then Oldsmobile made available a 5.7-liter diesel. It brought diesel economy to hundreds of thousands of people who may not have been able to afford it before.

Oldsmobile introduces a new 4.3-liter diesel V6.

It's for car buyers who want high mileage without sacrificing high style. This latest edition to the diesel Olds family is available on all the new Cutlass Ciera models, as well as all Cutlass Supremes.

V6 or V8, with a diesel Olds you save two ways. You get more miles per gallon and you get it on diesel fuel, which has traditionally been less expensive than unleaded gas.

If you need one additional compelling reason to buy a diesel, consider this. People who have checked various used car guides have found that, averaged out, much of the cost of the diesel option has often been returned to the owner at resale.

Other features you'll like in a diesel Oldsmobile.

- Fast Start Glow Plug system. Can have your Olds ready to start in about 8 seconds at 0°F.
- Roller hydraulic lifters. ■ In-line fuel filter system. Helps screen out solid impurities. ■ Water-in-fuel detection system. Comes with warning light. ■ An available engine block and fuel-line heater for cold weather areas.

At Oldsmobile, economy takes on many shapes and forms. It's aerodynamic lines and low-drag brakes and easy-roll tires. It's Computer Command Control



You can take it with you—in an Oldsmobile 88.



They slip through the air with aerodynamic ease.

Important: A word about this catalog. We have tried to make this catalog as comprehensive and factual as possible and we hope you find it helpful. However, since the time of printing, some of the information you will find here may have been updated. Also, some of the equipment shown or described throughout this Olds catalog is available at extra cost. Your dealer has details and, before ordering, you should ask him to bring you up-to-date. The right is reserved to make changes at any

on gasoline engines and torque converter clutch and electronic fuel injection and 4-speed over-drive automatic transmission.

The features may vary from model to model, but they represent a concerted engineering effort to make the 1982 Oldsmobiles economical to operate at a time when economy is so important.

The accompanying Fuel Economy Estimate/Engine Supplement Sheet contains the EPA estimates for all our cars, plus highway and city range estimates.

Of course, whichever Oldsmobile model you select, its foundation is the renowned Body by Fisher. And that means quality and meticulous attention to fit and finish.

Quality cars have always been our primary concern. When the Oldsmobile Motor Vehicle Company was first founded, it had as its stated objective "...to build one carriage in as nearly perfect a manner as possible.



Computer Command Control helps reduce exhaust emissions while allowing good fuel efficiency.

We have remained dedicated to the principle of offering cars that provide reliability and value for the dollar. That's what buyers have always wanted and that's



Two diesels available in '82: 5.7-liter diesel V8 and new 4.3-liter diesel V6. Both designed for impressive mileage.

what we think you want today. To you we present the 1982 Oldsmobiles. They prove that, even in practical times like these, there's still room to do it with style.

Oldsmobile

We've had one built for you.

Table of Contents:	PAGES
Toronado	4-5
Toronado Facts and Figures	6-7
Ninety-Eight Regency	8-11
Regency Facts and Figures	12-13
Delta 88 Royale	14-18
Delta 88	19
Delta 88 Facts and Figures	20-21
Custom Cruiser	22
Custom Cruiser Facts and Figures	23
Cutlass Cruiser	24
Cutlass Cruiser Facts and Figures	25
Options and Accessories	26-27
Complete Olds Model Line	28

Ninety-Eight Regency Brougham. Visual proof that there's still room to do it with style. This year, the Regency crest is tastefully embroidered in the rich velour fabric of each seat back.



traction on rain, snow or sand. Ask any Toronado or Omega owner.

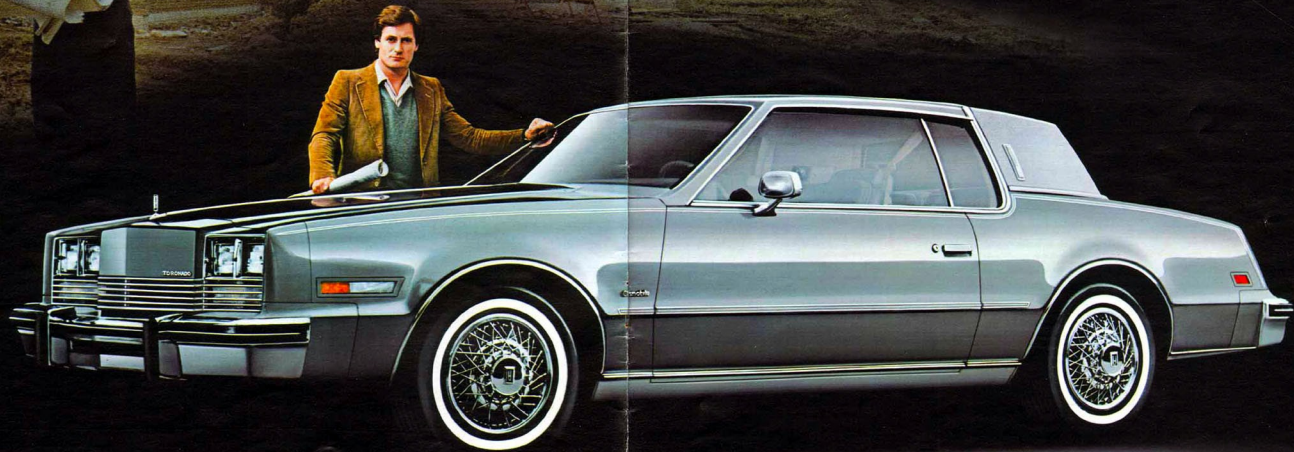
Cutlass Ciera also offers the highest EPA mileage estimates of any Cutlass ever, while providing plenty of room to enjoy it all.

Cutlass Supreme or Cutlass Ciera, which Cutlass is right for you? There's only one sure way to find out. Test-drive both of them. Incidentally, why not test-drive a diesel Oldsmobile? They're very popular today. The fact

*See EPA mileage estimates in accompanying Fuel Economy Estimate/Engine Supplement Sheet.

No prosaic designs for you. Nothing ordinary. Only the distinctive will do, a reflection of your individuality.

To you we present
**TORONADO
BROUGHAM**

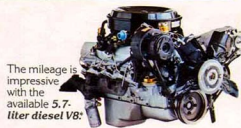




Available new "memory" seat can be programmed to automatically assume the position most comfortable for the driver. Available with genuine leather in the seating areas.

Toronado. The personal luxury car that started America moving with front-wheel drive. It's a moving experience in more ways than one. There's that distinctive

Toronado look you can spot a block away. There are those magnificently appointed Toronado interiors, spacious and relaxing. And this year, that long list of Toronado



The mileage is impressive with the available 5.7-liter diesel V8.



15.2 cubic feet of lined and carpeted trunk space for all the things you carry.

And with all that, impressive fuel economy as well*. A 4.1-liter V6 is standard, while a 5.0-liter V8 and a

5.7-liter diesel V8 are available. 4-speed overdrive automatic transmission is standard on all three engines. Doing it with style is easy to do when you're driving a Tornado.

Doing it with style is easy to do when you're driving a Tornado.



(A) Standard wheel discs.
(B) Available wire wheel discs with locks.



Power to please at the touch of a finger



Available Twilight Sentinel chases away shadows after you park.

- Computer Command Control
- Electronic High-Energy Ignition System
- Power Four-Wheel Disc Brakes
- Power Steering
- Front Torsion Bar and Rear Coil Suspension
- Torque-Beam Full Frame Construction
- Side-Frame Jacking System
- Compact Spare Tire and Wheel Space
- Efficient Trunk with Deluxe Trim and Spare Tire Cover
- Bumper Impact Strips with Integral Bumper Units
- Front and Rear Extensive Sound Deadening Units
- Front and Rear Power Windows and Door Locks
- Front and Rear Halogen Headlamps (High Beams)
- Front Fender Cornering Lamps
- Four-Wheel Independent Suspension
- Bright Roof Drip, Rocker Panel and Wheel-Opening Moldings
- Deluxe Bright Wheel Discs
- Delcotron

- Four-Season Air Conditioner ■ Front and Rear Seat Center Armrests ■ Pulse Tone Headlamp-On Warning
- AM-FM Stereo Pushbutton Radio with Digital Quartz Clock, 2 Rear Speakers, plus Power Front Fender Antenna (May be deleted for credit) ■ Convenience Group Lamps, Visor Vanity Mirror ■ Cruise Control with Resume Feature
- Side Window Defogger ■ Power Door Locks ■ Power Side Windows ■ Interior Operated Hood Lock Release
- Instrument Panel Temperature Gauge and Trip Odometer
- Soft-Ray Tinted Glass ■ Simulated Butterfly Walnut

- ☐ 6-Way Power Seat Adjuster (Passenger Side)
- ☐ 6-Way Power Seat Adjuster with 2-Position Memory Feature (Driver Side)
- ☐ Reclining Seat Back, Manual (Passenger Side)
- ☐ Reclining Seat Back, Manual (Driver Side)
- ☐ Reclining Seat Back, Power (Passenger Side)
- ☐ Automatic Power Door Locks
- ☐ Power Trunk/Lid Lock Release
- ☐ Auxiliary Floor Mats with Carpet Inserts, Front and Rear
- ☐ Luggage Compartment Floor Mat, Body Side Moldings – Color-coordinated with Lower Body or Vinyl Rooftop Cover if ordered
- ☐ Bright Door-Edge Moldings
- ☐ Pulse Wiper System
- ☐ Electric Sliding Glass Astrorof® (Headroom is reduced with this option)
- ☐ Padded Vinyl Rooftop Covering

- ✦ Electric Rear Window Defogger
- ✦ Temporary Air Conditioner
- ✦ Exterior Sail Panel Over Lamp
- ✦ Dome And Dual Lens Reading Lamp
- ✦ Corner
- ✦ Rear Seat Reading Lamps, Sail Panel Mounted
- ✦ Fiberglass Floor Locks and Interior Illumination Package
- ✦ Electrically Operated Outside Rearview Mirrors
- ✦ Fiberglass Vanity Mirror (Passenger Side)
- ✦ Outside Rearview Mirror with Illuminated Thermometer (Driver Side)
- ✦ Buoyed Shock Absorber
- ✦ Engine Block Heater
- ✦ Diesel Engine Block and Fuel Line Heater
- ✦ Rubber Wrapped Steering Wheel
- ✦ Tilt and Telescoping Steering Wheel
- ✦ Simulated Wire Wheel Discs with Locks
- ✦ Puncture-Sealing White-Stripe Tires
- ✦ 12V Deep Cycle Sealed Lead Acid
- ✦ High Capacity Battery
- ✦ Tilt Detent System
- ✦ Exterior Lamp Monitors, Front and Rear
- ✦ Simulated Firearm Paints in Autumn Red, Medium Slate and Dark Brown
- ✦ Custom Leather Trim for Seating Areas, in Slate Gray, Autumn Red and Black
- ✦ Reminder Package—Includes indicators for Low Fuel, Low Washer Fluid, High/Low Voltage and Low Coolant
- ✦ Body Side Paint Stripes
- ✦ Firm Ride and Handling Package—Includes Higher Rate Front Tronox Bars and Rear Springs, Firm Ride Front and Rear Shock Absorbers, Larger Front Stabilizer Bar, Rear Stabilizer Bar and Special Steering Gear (Tires QH-RK required)
- ✦ High Capacity Decolator
- ✦ High Capacity Cooling Systems
- ✦ Trailer Electrical Wiring Harness
- ✦ Radios and Tape Players (See Page 26)
- ✦ Sport Console
- ✦ P225/70R15 Steel-Belted Radial-Ply Tires (See Available and Recommended for Firm Ride and Handling Package)

6-way driver's seat controls standard

Air conditioning standard

Side window defoggers, power windows, standard

4.1-liter V6 standard

Automatic level control

Computer Command Control on gasoline engines

Front-wheel drive

Easyroll tires

Independent 4-wheel suspension

4-wheel power disc brakes standard

6-way driver's seat controls standard

TORONADO BROOMHOP POWER TEAMS	Available Engines:	3-Speed Overdrive Automatic	Fuel Tank Capacity:	Legroom:
Standard Engines:	5.0 V6	Overhead Valve (in.)	Gas (gal.)	Front (in.)
Optional Engines:	4-Barrel	Overall Length (in.)	Diesel (gal.)	Side (in.)
5.7 V6	5.7 V6	Wheelbase (in.)	Headroom, front (in.)	Shoulder Room, front (in.)
Carburetion	4-Barrel	Load Capacity (cu. ft.)	Headroom, rear (in.)	Shoulder Room, rear (in.)

*What you command is excellence. Every section
must come together in a harmonious blending
of artistry and discipline. You insist on it.*

To you we present

NINETY-EIGHT
REGENCY
BROUGHAM
SEDAN



From here you get a whole new perspective of the world. It's so quiet, so utterly relaxing. The cares of the day just seem to float away.

To you we present
**NINETY-EIGHT
REGENCY
COUPE**



Ninety-Eight Regency. You've earned it. A car that gives you room to do it with style. There are all manner of luxury cars on the market today. Yet you look beyond luxury. You look for solid logic to back up your selection.

So when you go about comparing luxury cars, ask yourself whether they offer what the Ninety-Eight Regency offers. For example, a 4.1-liter V6 teamed with a 4-speed overdrive automatic transmission to help provide impres-

sive fuel economy.* A torque converter clutch which helps provide efficient transfer of power from engine to road at high way speeds and also contributes to good mileage. A Computer Command Control

system that electronically helps reduce emissions while allowing good fuel efficiency. What about diesels? The Regency offers the optional 5.7-liter diesel V8 that made Oldsmobile America's number one seller of diesel cars.

*See EPA mileage estimates in accompanying Fuel Economy Estimate, Engine Supplement Sheet.

You know the guideline for sound capital investment: analyze thoroughly. The quality, performance, cost and efficiency. They all have to measure up.

To you we present
**NINETY-EIGHT
REGENCY
SEDAN**

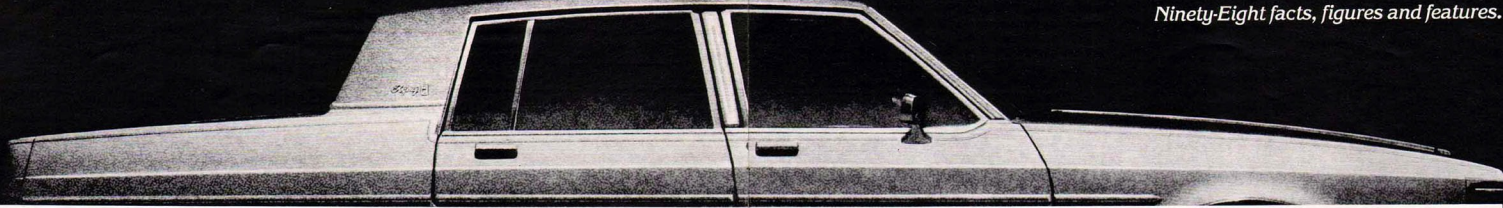


What about standard features? On Regency, everything from air conditioning to trip odometer is standard – even power door locks. What about ride? Not all luxury cars provide Regency's smooth-acting Piacel shocks, computer-

selected springs, full-coil front and rear suspension. But then, what about luxury itself? How do other luxury cars compare with Regency's impressive lines, its lavish interiors? Logic and luxury. In a Regency,

you get both in generous measure. **Ninety-Eight Regency Brougham.** Our top-of-the-line sedan, and looks it. Plush velours shape the loose-pillow-look interiors. Front seat is divided, and power seat is standard for the driver. Custom leather is

available in the seating areas. **Ninety-Eight Regency.** A beautiful marriage of logic and luxury. When you compare it with other cars for luxury, you'll understand why Regency's share of sales continues to grow at such a dramatic rate.



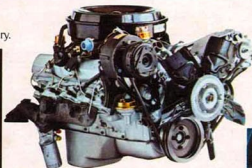
Take the wheel and discover Ninety-Eight logic and luxury.



Body by Fisher with anti-corrosion treatments to help protect the beauty.



Genuine leather available in the seating areas with power-assists to wait on you hand and foot.



The popular 5.7-liter diesel V8* is available. It takes you a long way on a tank of fuel and does it economically.

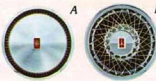


Opera lamps, a distinguishing note for Regency Brougham.



The lap of luxury, roomy and comfortable. Just sit back, relax, and enjoy all the elegance that surrounds you.

(A) Standard Regency disc. (B) Wire wheel discs with locks. (Std. Brougham, avail. Regency)



20.5 cubic feet of trunk space gives you room to spare.



NINETY-EIGHT REGENCY STANDARD EQUIPMENT Chassis and Body:

- Computer Command Control ■ Torque-Beam Frame Construction ■ Computer-Selected Full Coil Spring Suspension, Front and Rear ■ Anti-Corrosion Treatments ■ Power Front Low-Drum Brakes ■ Power Steering ■ Electronic High-Engine Ignition System ■ Freedom II Maintenance-Free Battery ■ Dual Remote Control Outside Rearview Mirrors ■ Rear Fender Skirts ■ Space-Efficient Trunk ■ Compact Spare Tire ■ Deluxe Trunk Trim with Spare Tire Cover ■ Bright Deluxe Wheel Discs ■ Bright Roof Drip Belt Reveal, Rocker Panel and Wheel-Opening Moldings ■ Easy-Roll High-Pressure White-Stripe Tires ■ Lower Body Side Moldings (Regency Brougham Sedan) ■ Headlamps with Tungsten Halogen High-Beams (Regency Brougham Sedan) ■ Sail Panel Opera Lamps.

Interior:

- Four-Season Air Conditioner ■ Armrests, Front and Rear Seat, Center ■ Wall-to-Wall Cut-Pile Carpeting with Carpeted Lower Door Panels ■ Cigar Lighters, Instrument Panel and Rear Seat ■ Digital Quartz Clock ■ Convenience Package of Lamps, Visor Vanity Mirror and Chime Tones ■ Power Door Locks ■ Door-Pull Handles ■ Hood Lock Release, Interior Operated ■ Instrument Panel Simulated Buttery Walnut Grain Trim ■ Trip Odometer ■ Combination Dome and Reading Lamp ■ Lamp Switches at all Doors ■ Remote Control Outside Mirrors, Driver and Passenger Side ■ AM/FM Stereo Radio with Two Rear Speakers (May be deleted for credit) ■ Full-Foam Seat Construction ■ Divided Front Seat with Individual Controls ■ 2-Way Power Seat Adjuster, Driver Side ■ Deluxe Seat Belts, Color-Coordinated to Individual Interiors ■ Power Side Windows ■ Deluxe Steering Wheel ■ Soft-Ray Tinted Glass.

STANDARD EQUIPMENT BY MODEL

Ninety-Eight Regency Brougham Sedan:

- Engine, 4.1-liter V6, 4-barrel ■ 4-Speed Overdrive Automatic Transmission with Torque Converter Clutch ■ Specific Model Identification ■ Five-Velour Standard Trims ■ Simulated Wire Wheel Discs with Locks ■ Full Vinyl Padded Rooftop Cover ■ Front Fender Cornering Lamps ■ Body Side Moldings — Color-Coordinated to Vinyl Rooftop Cover ■ P215/75R15 Steel-Belted Radial-Ply White-Stripe Tires ■ Tilt-Away Steering Wheel

Ninety-Eight Regency Coupe and Sedan:

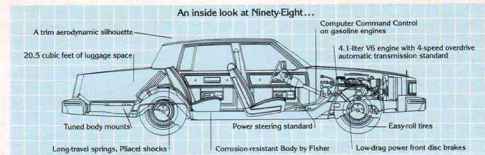
- Engine, 4.1-liter V6, 4-barrel ■ 4-Speed Overdrive Automatic Transmission with Torque Converter Clutch ■ Five Velour Trims ■ P215/75R15 Steel-Belted Radial-Ply White-Stripe Tires ■ Bright Deluxe Wheel Discs.

NINETY-EIGHT REGENCY/REGENCY BROUGHAM SEDAN AVAILABLE EQUIPMENT:

- 6-Way Power Seat Adjusters — Driver and Passenger Sides
- Reclining Seat Back — Passenger Side
- Power Trunk Lid Lock Release
- Auxiliary Floor Mats with Carpet Inserts, Front and Rear
- Luggage Compartment Floor Mat
- Body Side Moldings — Color-keyed to Body, except when Vinyl Top is Ordered, then keyed to Top Color (Std. on Brougham)
- Bright Door-Edge Guards
- Full Vinyl Padded Roof Covering (Std. on Brougham) (Sedan) and Landau Style Vinyl Covering (Coupe)
- Electric Rear Window Defogger
- Tempmatic Air Conditioner
- Sail Panel Reading Lamps (Sedans)
- Automatic Power Door Locks
- Lower Body Side Moldings (Standard Regency Brougham)
- Front Door Locks and Interior Illumination Package

- Electrically Operated Outside Rearview Mirrors, Driver and Passenger Side
- Front Seat Lateral Container
- Illuminated Visor Vanity Mirror, Passenger Side
- Body Side Accent Stripes
- Engine Block Heater
- Diesel Engine Block and Fuel-Line Heater
- Limited Slip Differential
- Automatic Cruise Control with Resume Features
- Tilt-Away Steering Wheel (Std. on Brougham Sedan)
- Tilt-and-Telescope Steering Wheel
- Simulated Wire Wheel Discs with Locks (Std. on Regency Brougham Sedan)
- Pulse Wiper System
- Combination Dome and Dual Lens Reading Lamp
- Litter Container
- Body Side Two-Tone Paint Scheme
- P225/75R15 Steel-Belted Radial-Ply White-Stripe Tires
- High-Capacity Battery
- Electric Sliding Glass Astrotop® (Headroom is reduced with this option)

- Puncture-Sealing Tires
- Tungsten Halogen Headlamps (High Beams) (Std. on Regency Brougham Sedan)
- Tailgate Sentinel
- Cornering Lamps (Std. on Regency Brougham Sedan)
- Instrument Panel Gauge Cluster
- Radios and Tape Players (See Page 26)
- Exterior Lamp Monitor, Front and Rear
- Special Firearm Paints, in Autumn Red, Medium Slate and Dark Brown
- Custom Leather Trims (in seating areas)
- Reminder Package, Indicators
- Automatic Leveling System
- High-Capacity Delecoston
- High-Capacity Engine Cooling Systems
- Quartz Digital Fluorescent Clock (Not available with Electronically Tuned Radios)
- Heavy-Duty Wheels
- Custom Leather Trims in Redwood, Slate Gray and Dueskin
- Trailer Electrical Wiring Harness



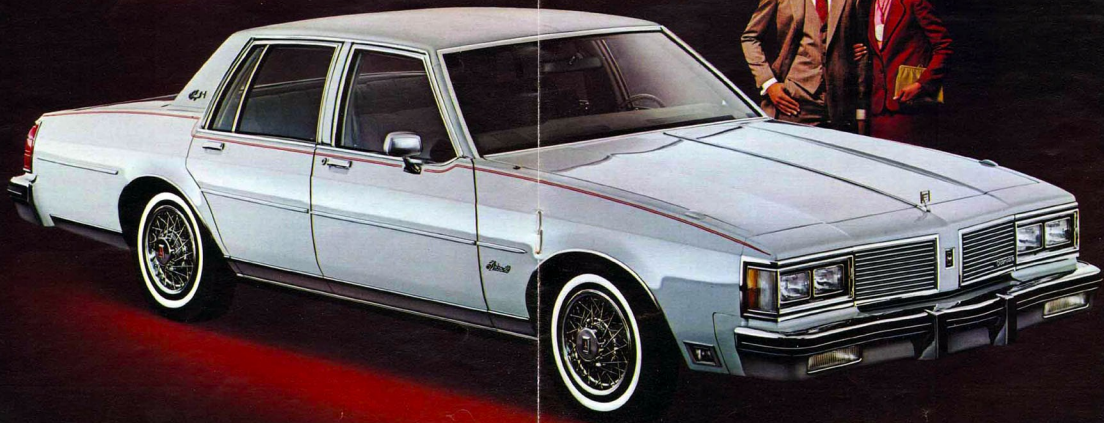
NINETY-EIGHT REGENCY POWER TEAMS		Carburetion.....4-Barrel		DIMENSIONS:		Fuel Tank, Gas (gal.).....23.0		Legroom,	
Standard Gasoline	4.1 V6	5.7 V8	5.7 V8	Overall Length (in.).....221.1	Wheelbase (in.).....119.0	Fuel Tank, Diesel (gal.).....26.0	rear (in.).....42.2-42.2		
4.1 V6	4-Barrel	Standard Transmission	4-Barrel	Luggage Cap. (cu. ft.).....20.5		Headroom, front (in.).....38.5-39.5	Shoulder Room, front (in.).....59.6-59.6		
Available Equipped:		4-Barrel	4-Barrel			Headroom, rear (in.).....37.8-38.1	rear (in.).....58.7-59.8		
Liter Type.....	5.0 V8								

*Not available at introduction with diesel engine.

*See EPA mileage estimates in accompanying Fuel Economy Estimate/Engine Supplement Sheet.

*When it's something important,
something of value, you expect much more
of it. Exquisite form. Impeccable detail.
A well-known, reputable name.*

To you we present
**DELTA 88
ROYALE
BROUGHAM
SEDAN**



To hit the mark, you know it takes fine, precision-made equipment: capable, comfortable, dependable. One that feels "just right."

To you we present
**DELTA 88
ROYALE
BROUGHAM
COUPE**



Game, set and match! It takes the right combination of qualities to win out there today. Bold thinking. Solid execution. The stamina to go the distance.

To you we present
**DELTA 88
ROYALE
SEDAN**



Delta 88. The family car that didn't forget the family. Family cars don't have to be ordinary just because they have to be practical. Not when they're Oldsmobiles. Take our Delta 88. It's the fastest-growing car in share of sales in the

full-size category. That means a lot of families are getting out of the ordinary and into an Olds 88.

That's because Delta 88 didn't forget what's important to a family like yours, especially these days.

Take the cost of fuel. Today it has

such an important bearing on the family budget. The more economical the car, the more money available for other family needs.

In a Delta 88, your family gets a wide range of economy-minded engines.* While a 3.8-liter V6 is stand-

ard, there are also three V8s available as well: 4.3-liter, 5.0-liter (with 4-speed overdrive automatic transmission standard) and the fast-starting 5.7-liter diesel.

Another thing, Delta 88s are aerodynamically designed to help reduce

wind resistance and increase mileage. So do the high-pressure, easy-roll tires and the low-drag power front disc brakes.

There's also a torque converter clutch that's standard on all Delta 88 models. It helps provide efficient

power transfer from engine to road at highway speeds to boost mileage.

The Computer Command Control system that's on all Delta 88s with gasoline engines permits good fuel economy. It monitors the air/fuel mixture electronically with an on-

board computer.

While you're enjoying all that style, you'll also be enjoying all the 88 comfort. That means stretch-out room for a family of six. A trunk that easily accommodates luggage for the annual family vacation. And a

ride so smooth and quiet it makes getting there half the fun.

End of story? Not by a long sight! Part of the joy of driving a Delta 88 is the ease with which you do it. That's because power steering is standard. Power front disc brakes

*See EPA mileage estimates in accompanying Fuel Economy Estimate. Engine Supplement Sheet.

You know that all the elements must be compatible. So you weigh and measure, test and compare. When they all come together, the results are very satisfying.

To you we present
**DELTA 88
ROYALE
COUPE**



You've learned to recognize the qualities that are important. Solid construction. Room and comfort. Low upkeep. In short, a nice place for a nice family.

To you we present
**DELTA 88
SEDAN**



are standard. So is the automatic transmission. This year, even the remote control mirror for the driver is a new standard feature. But then, you expect a lot in a family car and Delta 88 won't disappoint yours.

Then there are the unseen quali-

ties, the lengths to which Oldsmobile with Body by Fisher goes to protect your Delta 88 from the ravages of road and weather. And that means everything from thermoplastic inner liners in the fenders, to special metals, to extensive anti-corrosion treat-

ments throughout the body. It goes to prove that beauty isn't just skin deep in a Delta 88.

Now comes the hard part. Which of our five Delta 88s will it be? All we can suggest is that you take a test drive and then decide. Whichever

one you choose, you'll get a family car that didn't forget the family.

Delta 88 Royale Brougham. Your family is going to be pampered in style. The sumptuous velour fabrics are smartly tailored into fashionable loose-pillow-look designs. The front

seat is divided so driver and passenger may adjust their side for personalized comfort. And you're ankle deep in comfort with elegant wall-to-wall cut-pile carpeting that even extends up onto the lower door panels. A nice finishing touch for

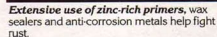
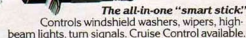
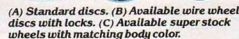
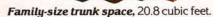
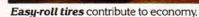
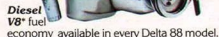
your Royale Brougham. **Delta 88 Royale.** These are our most popular 88s, and you can easily see why. Their sleek looks and handsome interiors make them a family favorite all across the country. Available in both coupe and sedan

versions, they give plenty of headroom, legroom and knee room. They're magnificently detailed and provide a beautiful setting for a family like yours.

Delta 88. When it comes to basic family car value, this sedan really

knows how to deliver. Take it for a test drive and compare it with its dollar-for-dollar competition and you'll see what we mean. Compare it for price, value, quality, engineering and past resale. You'll find you can do it with style — on a family-size budget.

*See EPA mileage estimates in accompanying Fuel Economy Estimate: Engine Supplement Sheet.



*See EPA mileage estimates in accompanying Fuel Economy Estimate/Engine Supplement Sheet

- Computer Command Control
- Torque-Beam Frame Construction
- Computer Selected Full Coil Spring Suspension, Front and Rear
- Extensive Anti-Corrosion Treatments
- Low-Drain Power Front Disc Brakes
- Power Steering
- Electronic High-Energy Ignition System
- Delcotron
- Compact Spare Tire
- Side-Frame Jack
- Bumper Roll Straps, plus Integral Guards, Front and Rear
- Recessed Windshield Wipers
- Front-End Panel Stand-Up Ornament
- Rearview Mirror Remote Control, Driver Side
- Roof Drip, Rocker Panel and Wheel-Opening Moldings
- Bright Deluxe Wheel Discs
- Easy-Roll High-Pressure Tires

■ Full-Foam Seat Construction ■ Armrests, Front and Rear
■ Cut-Pile Carpeting, Wall-to-Wall with Carpeted Lower
Door Panels ■ Simulated Butterfly Walnut Grain Instrument
Panel Trim ■ Cigar Lighter ■ Door-Actuated Courtesy
Lamps ■ Deluxe Steering Wheel ■ Headlamp-On Warning
Sound ■ Inside Day-Night Rearview Mirror ■ Interior Hood
Lock Release ■ Deluxe Seat Belts ■ Flo-Thru Ventilation.

Delta 88 Royale Brougham Coupe and Sedan:
 ■ Engine, 3.8-liter V6, 2-Barrel ■ Transmission, Automatic
 with Torque Converter Clutch and Column Shift ■ Pillar
 Opera Lamps (Coupe) ■ Body Side Moldings Color-
 Coordinated to Lower Body (If Vinyl Rooftop is Ordered,
 Moldings are Color-Keyed to Rooftop Color) ■ Belt Reveal,
 Rocker Panel and Wheel-Opening Moldings ■ Bright Root
 Drip Moldings ■ P205/75R15 Steel-Belted Radial-Ply
 Blackwall Tires ■ Divided Front Seat with Individual
 Controls in Five Colors of Velour ■ Convenience Package
 of Lamps, Visor Vanity Mirror and Chime Tones.

■ Engine, 3.8 liter V6, 2 Barrel ■ Transmission, Automatic with Torque Converter Clutch and Column Shift ■ Rocker Panel, Wheel-Opening and Body Side Moldings ■ Body Side Moldings Color-Coordinated with Lower Body (If Vinyl Top is Ordered, Moldings are Color-Keyed to Top Color) ■ P205/75R15 Steel Belted Radial-Ply Blackwall Tires ■ Custom Sport Bench Front Seat with Center Armrest in Five Colors of Velour.

- Engine, 3.8-liter V6, 2-Barrel ■ Transmission, Automatic with Torque Converter Clutch and Column Shift ■ Bright Roof Drip, Rocker Panel and Wheel-Opening Moldings
- P205/75R15 Steel-Belted Radial-Ply Blackwall Tires
- Bench Front Seat with Five Colors of Trim (Three Cloth, Two Vinyl).

- ☐ 6-Way Power Seat Adjuster (Bench)
- ☐ 6-Way Power Seat Adjuster (Divided Seat, Driver and Passenger Sides)
- ☐ Divided Seat, with Individual Controls (Royale models)
- ☐ Reclining Seat Back – Passenger Side (Royale/Royale Brougham models)
- ☐ Soft-Ray Tinted Glass
- ☐ Power Door Locks
- ☐ Power Side Windows
- ☐ Power Trunk/Lid Lock Release

- ☐ Deluxe Luggage Compartment Trim and Spare Tire Cover
- ☐ Bright Door-Edge Guards
- ☐ Pulse Wiper System
- ☐ Electric Sliding Astrorooft in Tinted Glass (Headsramp is reduced with this

- ☐ Padded Vinyl Landau Roof Cover (Coupes); Full Vinyl Rooftop Cover (Sedans)
- ☐ Body Side Moldings (Standard on Royale and Royale Brougham)

- ☐ Four-Season or Tempmatic Air Conditioners
- ☐ Electric Rear Window Defogger
- ☐ Front Door Locks and Interior Illumination Package
- ☐ Sport-Style Remote and Manual Control Mirrors, Driver and Passenger Side
- ☐ Automatic Cruise Control with Resume Feature
- ☐ Limited Slip Differential
- ☐ Engine Block Heater

- ☐ Tilt-Away or Tilt-and-Telescope Steering Wheel
- ☐ Simulated Wire Wheel Discs with Locks
- ☐ Sport-Style Wheels, Color-Keyed to Body
- ☐ Convenience Group, includes Lamps

☐ Combination Dome and Dual Lens Reading Lamp

☐ Electric Outside Mirrors, Driver and Passenger Side

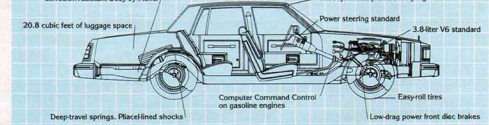
(High-Beams)

- ☐ Heavy-Duty Battery
- ☐ Digital Quartz or Regular Clocks
- ☐ Trip Odometer
- ☐ Exterior Lamp Monitor, Front and Rear
- ☐ Instrument Panel Reminder Package
- ☐ Special Two-Tone Paint Scheme, Lower Body
- ☐ Firm Ride and Handling Package
- ☐ Automatic Leveling System

- ☐ High-Capacity Engine Cooling Systems
- ☐ Radios and Tape Players (See page 26)
- ☐ Tires, P205/75R15 Steel-Belted Radial-Ply White Stripe
- ☐ Tires, P215/75R15 Steel-Belted Radial-Ply White Stripe

- ☐ Litter Container
- ☐ Body Side Accent Stripes
- ☐ Trailer Electrical Wiring Harness, 5-Wire

Corrosion-resistant Body by Fisher



DELTA BE POWER TEAMS		Carburetion.....5.7 V/B	4-Speed Overdrive Automatic with 5.0 liter	Fuel Tank, Diesel (gals.) 26.0	Logroom.....
Standard Engine.....		Liter Type..... Diesel		Cruiser Sedan	near (in).....72.2 42.2
Liter/Type.....3.8 V/B					near (in).....38.3 38.9
Carburetion.....2 Barrel		Standard Transmission		Headroom.....	Shoofar (in).....60.6 60.6
Liter/Type.....4.3 V/B		With Torque Converter Clutch		near (in).....	near (in).....59.1 60.5
Liter/Type.....5.0 V/B		with all engines except 5.0 liter.	DIMENSIONS		
			Overall Length (in.).....218.1		
			Wherebase (in.).....116.0		
			Luggage Comp. (cu. ft.).....38.3 38.2		
			Fuel Tank, Gas (gals.).....25.0		

"Best in Show." You know it takes a lot to be a winner. It takes attractive looks. Obedient response. High spirit. All-around versatility.

To you we present
CUSTOM CRUISER



Custom Cruiser. As elegant inside as a luxury sedan. Everyone expects room in a wagon. But a wagon that lets you do it with style? That's Custom Cruiser!

Want rich velour upholstery? It's yours... at no extra charge. Or

course, if you prefer the practicality of vinyl, you can get that instead. Either way, you get deep, cut-pile carpeting that runs full length from front floor to rear tailgate. And, of course, the seats are full-foam. Another thing you'll like about

Custom Cruiser is that the tailgate window is driver-controlled from the instrument panel. And standard.

With Custom Cruiser you can go a long way without being wasteful with fuel.* A 5.0-liter V8 with 4-speed overdrive automatic transmission

is standard. Want even better mileage? Just specify the available 5.7-liter diesel V8.

Whether you carry Scotties or scuba gear, Custom Cruiser gives you up to 87.2 cubic feet of cargo area to stow it in. With style.

*See EPA mileage estimates in accompanying Fuel Economy Estimate: Engine Supplement Sheet.

Custom Cruiser facts, figures and features.



87.2 cubic feet of room with second seat down. Rear opening is 4 feet wide at floor level.



More room available! A locked storage compartment for valuables.



Folded third seat available to provide 8-passenger capacity when you need it.

CUSTOM CRUISER STANDARD EQUIPMENT Chassis and Body:

■ Computer Command Control ■ Computer Selected Full Coil Spring Suspension, Front and Rear ■ Extensive Anti-Corrosion Treatments ■ Low-Drag Power Front Disc Brakes ■ Power Steering ■ Electronic High-Energy Ignition System ■ Easy-Rolling High-Pressure Tires ■ Heavy-Duty Wheels ■ Bumper Impact Strips with Integral Bumper Guards, Front and Rear ■ 3-Way Tailgate Operation ■ Side-Frame Jacking System ■ Spare Tire Extractor.

Interior:

■ Armrests, Front and Rear ■ Ashtrays, Instrument Panel and Rear Seat ■ Headlamp-On Warning ■ Cigar Lighter ■ Door-Pull Handles, Front and Rear ■ Walk-to-Wall Cut-Pile Carpeting, including Lower Door Panels and Cargo Area ■ Hood Lock, Interior Operated ■ Simulated Butterfly Walnut Grain Instrument Panel Trim ■ Electric Rear Window Control on Instrument Panel ■ Remote Control Outside Mirror, Driver Side ■ Rear Storage Compartment with Lock ■ Deluxe Seat Belts ■ Flo-Thru Ventilation.

CUSTOM CRUISER 2-SEAT WAGON Additional Standard Equipment:

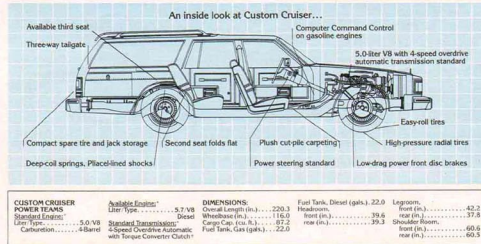
■ Engine, 5.0-liter V8, 4-barrel ■ 4-Speed Overdrive Automatic Transmission with Torque Converter Clutch ■ Armrest Bench Front Seat with Four Velour and Three Doeskin Vinyl Trim Choices ■ P225/75R15 Steel-Belted Radial Ply Blackwall Tires ■ Deluxe Wheel Discs

CUSTOM CRUISER AVAILABLE EQUIPMENT:

□ 6-Way Power Seat Adjuster, Driver and Passenger Side
□ Electrically Operated Outside Mirrors, Driver and Passenger Side
□ Front Seat Litter Container
□ Reclining Seat Back, Manual Passenger Side
□ Power Door Locks, including Tailgate
□ Power Side Windows
□ Lower Body Side Moldings
□ Body Side and Tailgate Simulated Walnut Grain Panels
□ Auxiliary Floor Mats with Carpet Inserts, Front and Rear
□ Bright Door Edge Guards
□ Rear Window Electric Defogger
□ Pulse Wiper System
□ Four-Season or Tempmatic Air Conditioner
□ Soft-Ray Tinted Window Glass
□ Body Side Moldings
□ Litter Container

□ Combination Dome and Reading Lamp
□ Front Door Lock and Interior Illumination Package
□ Electrically Operated Outside Mirrors, Driver and Passenger Side
□ Front Seat Litter Container
□ Illuminated Visor Vanity Mirror, Passenger Side
□ Limited Slip Differential
□ Engine Block Heater
□ Diesel Engine Block and Fuel Line Heater
□ Automatic Cruise Control with Resume Feature
□ Tilt-Away or Tilt-and-Telescope Steering Wheel
□ Simulated Wire Wheel Discs with Locks
□ Puncture-Sealing Tires
□ Convenience Group, including Lamps, Visor Vanity Mirror and Chime Tones
□ Sport-Styled Outside Mirror Control

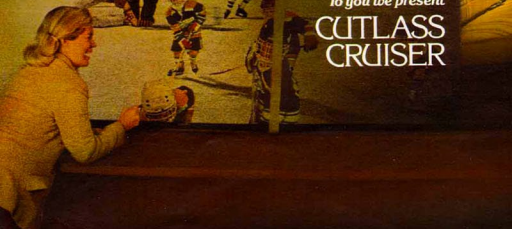
Mirrors - Driver and Passenger Side
□ Tungsten Halogen Headlamps, High Beams
□ Front Fender Cornering Lamps
□ Digital Quartz or Regular Clocks
□ Instrument Panel Gauge Cluster
□ Trip Odometer
□ Exterior Lamp Monitors, Front and Rear
□ Rear Bumper Step, included in Rear Seat Package
□ Rooftop Luggage Carrier, includes Rear Window Air Deflector
□ Reminder Package, Indicators
□ Firm Ride and Handling Package
□ Automatic Leveling System
□ High-Capacity Engine Cooling System
□ Radios and Tape Players (See Page 26)
□ Tires, P225/75R15 Steel-Belted Radial Ply White Stripe
□ High-Capacity Battery
□ Trailer Electrical Wiring Harness



*Not available at introduction with diesel engine.

You can always be counted on to be there when you're needed. Dependable, dedicated, a boundless capacity for making life more enjoyable for everyone.

To you we present
**CUTLASS
CRUISER**



Cutlass Cruiser. Do it with style without going overboard on price. Cutlass has been America's best-selling mid-size car for years. Cutlass Cruiser has contributed to that popularity. It brings Cutlass style, comfort and value to a station wagon

generously endowed with space. You get up to 71.8 cubic feet of cargo area. There's also a tire storage compartment and small package storage compartments, available with locks. Front center armrest and fully

carpeted cargo floor are standard. Power steering, power front disc brakes and automatic transmission also standard for driving ease. And you aren't likely to find many wagons which offer so many engine choices.* A 3.8-liter V6 is standard.

three V8s available, including a 5.7-liter diesel. From engine compartment to passenger compartment to cargo compartment, Cutlass Cruiser is a lot of wagon for the money. Best of all, it's an Oldsmobile!

*See EPA mileage estimates in accompanying Fuel Economy Estimate Engine Supplement Sheet.

Cutlass Cruiser facts, figures and features.



Easy does it! Convenient split tailgate and carpeted cargo area.



Room at the top! Available roof rack and air deflector add to a capacious cargo area.



Out of sight! Hidden compartment/spare tire storage helps conceal and protect valuables.

CUTLASS CRUISER STANDARD EQUIPMENT Chassis and Body:

- Computer Command Control* Electronic High-Energy Ignition System ■ Power Steering
- Low-Drag Power Front Disc Brakes and Rear Drums ■ Computer-Selected Full Coil Springs, Front and Rear ■ Tuned Body Mounts
- Delcotron ■ Bumper Rub Strips with Integral Guards, Front and Rear ■ Anti-Corrosion Treatments ■ Anti-Corrosion Front Fender Inner Liners ■ Easy-Rolling Tires ■ Automatic Transmission with Torque Converter Clutch
- Hood Center Molding, plus Stand-Up Front-End Panel Ornament ■ Bright Roof Drip, Rocker Panel and Wheel Opening Moldings
- Fluidic Windshield Washer ■ Recessed Windshield Wipers ■ P195/75R14 Steel-Belted Radial-Ply Blackwall Tires ■ Deluxe Bright Wheel Discs.

Interior:

- Full-Foam Seat Construction ■ Armrests, Front and Rear ■ Cut-Pile Carpeting, Wall-to-Wall with Carpeted Lower Door Panels and Cargo Area ■ Interior Operated Hood Lock Release ■ Simulated Buttery Walnut Grained Instrument Panel Trim ■ Cigar Lighter
- Headlamp-On Warning ■ Inside Day/Night Rearview Mirror ■ Deluxe Seat Belts, Color-Keyed to Individual Interiors ■ Deluxe Steering Wheel ■ Flo-Thru Ventilation ■ Automatic Lamp Switches, Front Doors ■ Front Door-Pull Handles ■ Central Dome and Tailgate Dome Lamps ■ Tailgate has Separate Rear Switch.

Cutlass Cruiser 2-Seat Wagon:

- Engine, 3.8-liter V6, 2-Barrel ■ Automatic Transmission with Torque Converter Clutch and Column Shift ■ Custom Sport Bench Front Seat with Center Armrest ■ Choice of Cloth Trim in Four Colors, Vinyl in One Color ■ Wall-to-Wall Carpeting including Cargo Area

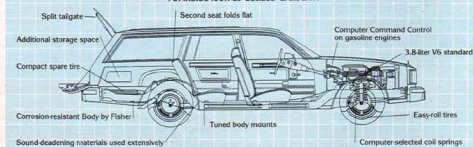
CUTLASS CRUISER AVAILABLE EQUIPMENT:

- 6-Way Power Seat Adjuster (Divided Bench, Driver Side)
- 6-Way Power Seat Adjuster (Standard Bench)
- Reclining Seat Back, Manual (Passenger Side)
- Divided Bench Front Seat with Individual Controls
- Power Door Locks
- Power Tailgate Lock Release
- Soft-Ray Tinted Glass
- Power Side Window (Available with Power Rear Door Vents)
- Lower Body Side Moldings
- Auxiliary Floor Mats with Carpet Inserts, Front and Rear
- Bright Door-Edge Guard Moldings
- Pulse Wiper System
- Electric Rear Window Defogger
- Air Conditioner - Four-Season or Automatic Temperature
- Dome and Reading Lamp Combination

- Remote Control Outside Rearview Mirrors, Driver only, or Driver and Passenger Side
- Illuminated Visor Vanity Mirror, Passenger Side
- Limited Slip Differential
- Engine Block Heater
- Automatic Cruise Control with Resume Features
- Custom Sport Steering Wheel
- Body Side and Tailgate Wood Grain Vinyl Panels
- Locks for Tire Storage and Rear Quarter Storage Compartments with Doors
- Rooftop Luggage Carrier
- Rear Window Air Deflector
- Tilt-Away Steering Wheel
- Super Stock Wheels - Color-Keyed to Body Color
- Simulated Wire Wheel Discs with Locks
- Puncture-Sealing Tires
- Tires, P205/70R14 Steel-Belted Radial-Ply White Stripe

- Tires, P195/75R14 Steel-Belted Radial-Ply White Stripe
- Tires, P205/70R14 Steel-Belted Radial-Ply Blackwall with Raised White Letters
- Convenience Group including Lamps, Visor Vanity Mirror and Chime Tones
- Tungsten Halogen Headlamps (High Beams)
- High-Capacity Battery
- Digital Display or Regular Quartz Clocks
- Instrument Panel Gauge Clusters
- Trip Odometer
- External Lamp Monitors, Front and Rear
- Firm Ride and Handling Package
- High-Capacity Delcotron
- Heavy Duty Wheels
- 5-Wire Trailer Electrical Wiring Harness
- High-Capacity Cooling Systems
- Radios and Tape Players (See Page 26)

An inside look at Cutlass Cruiser...



CUTLASS CRUISER POWER TRAINS

Standard Equipment	Carburetion.....2-Barrel
Engine	Liter Type.....3.0 V-6
Carburetion4-Barrel
Available Equipped3.7 V-8
Liter Type4.3 V-8

Standard Transmission

AutomaticTorque Converter
ClutchManual
Overall Length (in.)200.4
Wheelbase (in.)108.1

Dimensions

Front (in.)36.8
Rear (in.)38.8

Cargo Cap. (cu. ft.)

Full Tank, Gas (gals.)18.2
Fuel Tank, Diesel (gals.)18.2
Front (in.)42.8
Rear (in.)35.5
Shoulder Room56.7
Front (in.)56.7
Rear (in.)57.1

Legroom

Front (in.)42.8
Rear (in.)35.5
Shoulder Room56.7
Front (in.)56.7
Rear (in.)57.1

Printed in U.S.A. 8/81



AM-FM stereo radio with cassette, digital clock, treble and bass.



AM-FM stereo radio with digital clock, separate treble and bass.

DELCO-GM PREMIUM RADIOS	TORO	86	84	CUSTOM CRUISER	CUTLASS CRUISER
Electronically tuned AM/FM Stereo-Cassette with Clock	A	A	A	A	A
AM/FM Stereo with Cassette	A	A	A	A	A
AM/FM Stereo-Cassette with Clock	A	A	A	A	A
Electronically tuned AM/FM Stereo-8 Track with Clock	A	A	A	A	A
AM/FM Stereo with 8 Tracks	A	A	A	A	A
AM/FM Stereo-8 Track with Clock	A	A	A	A	A
Electronically tuned AM/FM Stereo-Cassette-CB with Clock	A	A	A	A	A
Electronically tuned AM/FM Stereo-8 Track-CB with Clock	A	A	A	A	A
AM/FM Stereo-CB	A	A	A	A	A
Electronically tuned AM/FM Stereo with Clock	A	A	A	A	A
AM/FM Stereo	S	S	A	A	A
AM/FM Stereo with Clock	S	S	A	A	A
AM/FM Monaural			A	A	A
AM			A	A	A
Universal Stereo Band	A				

S=Standard A=Available *Standard radios may be deleted for credit

NOTE: Availability of optional equipment varies by model. Check your Oldsmobile dealer for details.



Reminder package for added driving assurance.



Fluorescent digital clock. Spells out the time in big numbers.



Cruise Control with resume-speed feature.



Lighted visor vanity mirror.



Twilight Sentinel lights your way after dark.



Continuous Protection Plan



GM's Continuous Protection Plan offers service protection in addition to that provided by GM's New Vehicle Limited Warranty. Ask your dealer about it. Coverage available only in U.S.A. and Canada.

Reclining front passenger seat. Provides a variety of comfortable positions.



Tilt-Wheel Steering.



Tempmatic air conditioning.



Fiber-optic lamp monitors.

Pulse wipers let you set a variety of delay-interval wiper.



Halogen high-beam headlamps.



Rear window defogger. Keeps things clear.



Cornering lamps. Light your turns.



Electric sliding Astrorof.



Power antenna. Goes up or down as needed.



Six-way power seat adjuster.



Illumination package. Lift handle, door lock is illuminated, interior lights go on.

A word about assembly, components and optional equipment in these Oldsmobile products: The Oldsmobiles described in this catalog are assembled at facilities of General Motors Corporation operated by Oldsmobile Division and General Motors Assembly Division. These vehicles incorporate thousands of different components produced by various divisions of General Motors and by various suppliers to General Motors. From time

to time during the manufacturing process, it may be necessary, in order to meet public demand for particular vehicles or equipment, or to meet federally mandated emissions, safety and fuel economy requirements, or for other reasons, to produce Oldsmobile products with different components or differently sourced components than initially scheduled. All such components have been approved for use in Oldsmobile products and will provide the quality

performance associated with the Oldsmobile name.

With respect to extra-cost optional equipment, make certain you specify the type of equipment you desire on your vehicle when ordering it from your dealer. Some options may be unavailable when your car is built. Your dealer receives advice regarding current availability of options. You may ask the dealer for this information. GM also requests the dealer to advise you if the option you ordered is unavailable. We

suggest that you verify that your car included the optional equipment you ordered or if there are changes, that they are acceptable to you.

Standard accident-avoidance features: Side marker lights and reflectors □ Parking lamps that illuminate with headlamps □ Four-way hazard warning flasher □ Backup lights □ Lane change feature in direction signal control □ Windshield defrosters, washer and dual speed wipers □ Vinyl-edged inside

mirror □ Outside rearview mirror □ Dual master cylinder brake system with warning light □ Starter safety switch □ Dual action safety hood latches. **Standard built-in anti-theft features:** Audible anti-theft ignition key reminder □ Anti-theft steering column lock □ Inside hood release. **Standard occupant-protection features:** Manual lap/shoulder belts with pushbutton buckles for driver and right front passenger (driver side includes visual

and audible warning system) □ Manual lap belts with pushbutton buckles for rear passenger positions. Also the center front (when applicable) □ Energy-absorbing steering column □ Passenger guard door locks □ Safety door latches and stamped steel hinges □ Folding seat back latches □ Energy-absorbing instrument panel and front seat back tops □ Laminated windshield/tempered side and rear glass □ Safety armrests □ Identification symbols for controls, displays.

*See EPA mileage estimates in accompanying Fuel Economy Estimate: Engine Supplement Sheet.

***With 26 beautifully engineered
Olds models, there's still room to
do it with style.***

Toronado Brougham
Ninety-Eight Regency Brougham Sedan
Ninety-Eight Regency Sedan
Ninety-Eight Regency Coupe
Delta 88 Royale Brougham Sedan
Delta 88 Royale Brougham Coupe
Delta 88 Royale Sedan
Delta 88 Royale Coupe
Delta 88 Sedan
Custom Cruiser
Cutlass Ciera Brougham Sedan
Cutlass Ciera Brougham Coupe
Cutlass Ciera LS Sedan
Cutlass Ciera LS Coupe
Cutlass Ciera Sedan
Cutlass Ciera Coupe
Cutlass Supreme Brougham Sedan
Cutlass Supreme Brougham Coupe
Cutlass Calais Coupe
Cutlass Supreme Sedan
Cutlass Supreme Coupe
Cutlass Cruiser
Omega Brougham Sedan
Omega Brougham Coupe
Omega Sedan
Omega Coupe

