

1984

THERE IS A SPECIAL FEEL IN AN OLDSMOBILE



OLDSMOBILE

NINETY-EIGHT REGENCY • DELTA 88 ROYALE • TORONADO • CUSTOM CRUISER



IT'S THE FEELING OF PRIDE THAT YOU FEEL INSIDE



There is a special feel in an Oldsmobile!

There is something very special that goes along with the ownership of an Oldsmobile automobile.

It's more than the stylish good looks which win so many glances of approval.

It's more than the luxurious interiors so pleasing to the senses.

More than the meticulous engineering, the masterful riding qualities, the impressive performance.

That special feel goes beyond the tangible and the visible.

Most notably, it is a feeling of *pride*, the pride you feel inside. The feeling of *confidence*. The sense of *well-being*.

You invested wisely and well and you feel very good about it.

That special feel of quality comes in all shapes and sizes.

Luxury cars and family cars, sporty cars and wagons—29 Oldsmobile models for 1984, each designed and built with one primary objective: *quality*. Olds quality through and through.

As a prime example, there's the magnificent Ninety-Eight Regency, the most elegant expression of Oldsmobile quality. This elegant,

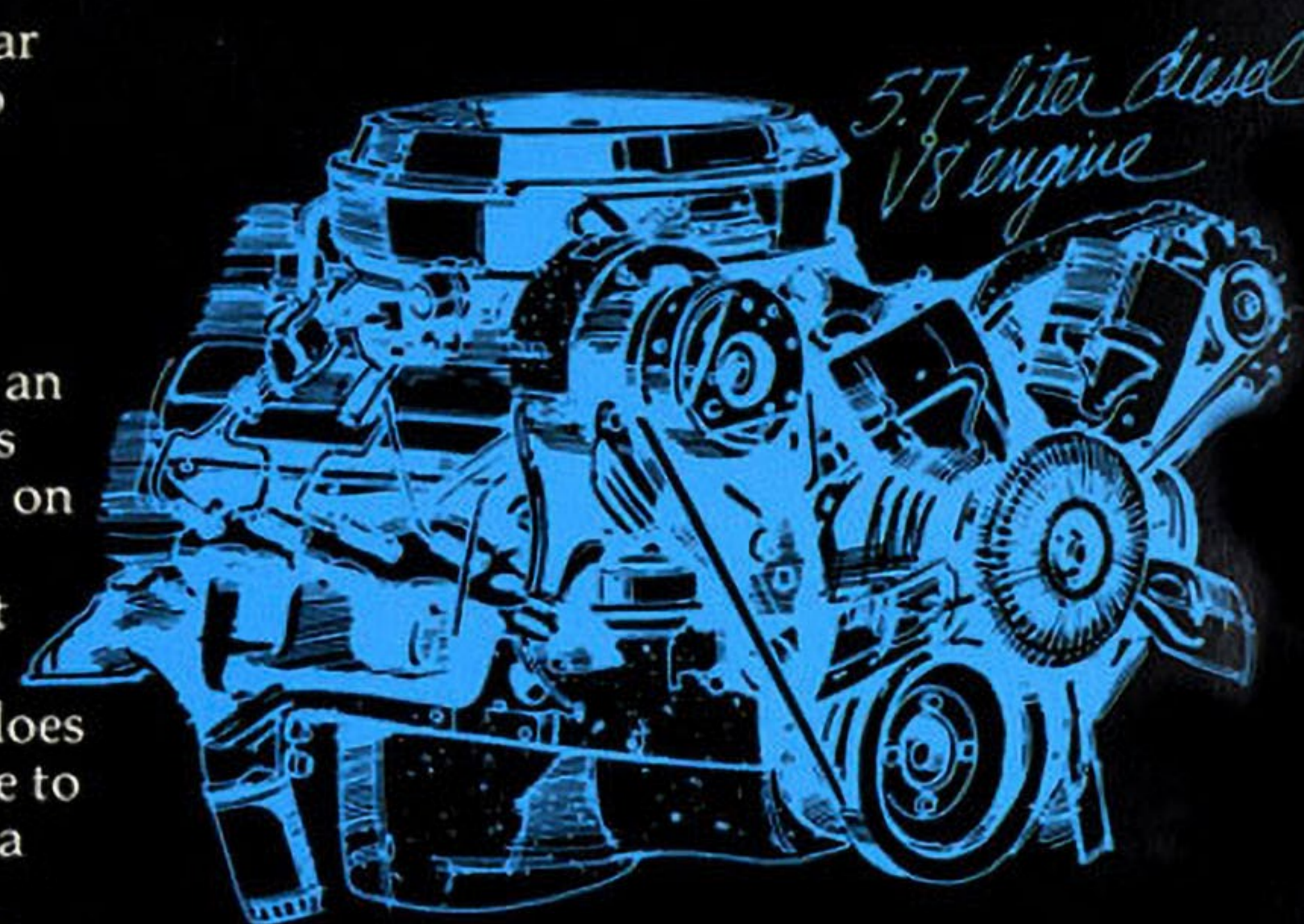
top-of-the-line Olds luxury car gives its owners ample room to feel proud.

Toronado owners, on the other hand, like the feeling of distinction this personal luxury car gives them. They know that it, and they, stand apart. And for 1984, an even more unique Caliente version makes its appearance. You can see it and read about it on page 27.

But you might ask, what about *families*? What does Oldsmobile have to offer *them*? Delta 88 Royale, of course, the family car that didn't forget the family. These big, roomy beauties carry six in style and comfort with that special feel found

in every Oldsmobile. Station wagons? There are three versatile Cruiser models in 1984, in three different styles and sizes. This catalog features the full-size Custom Cruiser. Its capacity for handling people and cargo is matched only by its capacity for providing plush accommodations and a limousine-like ride.

In two additional catalogs, you can read about the 1984 Cutlass Supreme and Cutlass



5.7-liter diesel V8 engine

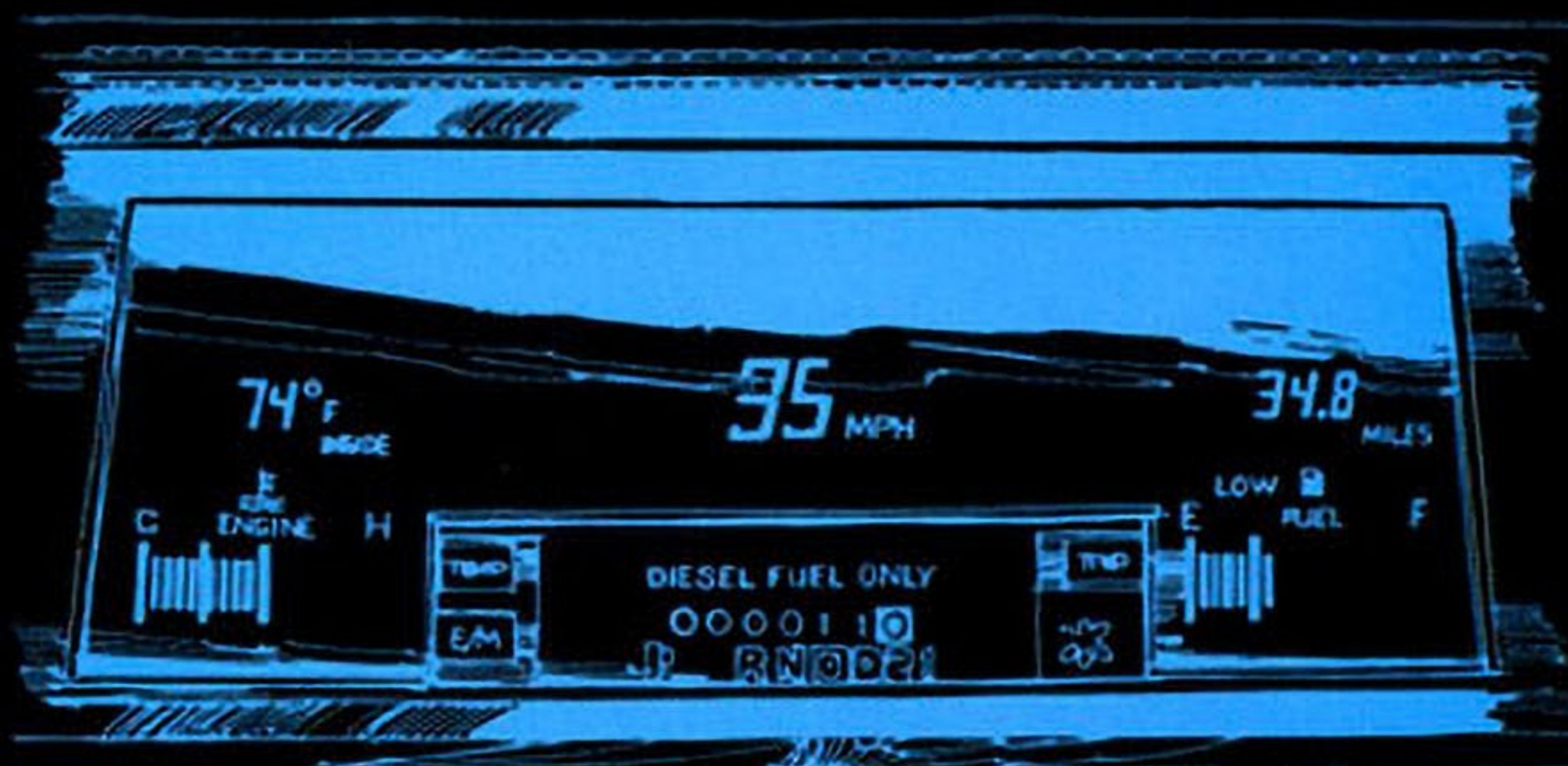
Ciera... as well as the Olds Firenza and Omega.

The special feel in diesel Oldsmobiles.

More people have bought diesel Oldsmobiles than any other American diesel-powered cars—nearly 600,000 thus far.

Why diesel Oldsmobiles? Because a diesel Olds does more than just deliver impressive fuel economy, which you expect of any diesel.

First of all, its Fast-Start Glow Plug System means quick, easy starting even in cold or damp weather. Then, its advanced V-design



Electronic instrument cluster



provides perceptible smoothness of operation. And, finally, its responsive performance which is on tap at all times.

In 1984, Oldsmobile offers two different diesel engines. A 5.7-liter diesel V8 is available on Ninety-Eight Regency, Toronado, Delta 88 Royale, Custom Cruiser and Cutlass Supreme (except in California). A smaller 4.3-liter V6 diesel is available on Cutlass Supreme, Cutlass Ciera, Cutlass Cruiser.

Computers play a big part in that Oldsmobile feel.

It starts with computer-enhanced designs for sleeker, more aerodynamic lines and more precise alignment of parts. Computer-selected springs for a great Olds ride. And Computer Command Control on board your Oldsmobile to monitor the efficient performance of the engine.

Of course, computers are only part of the advanced technology that goes into the design-

ing, building and testing of Oldsmobile cars. Laser beams, for example, gamma rays, optic scanners, and all manner of ingenious robotics.

Leave it to America's oldest car maker to use the newest technological tools available.

The quality shines through right from the base metal.

It's rust resistant primers and sealers and waxes, generously applied over specially-treated steel or Zincrometal. It's tough thermoplastic liners under the front fender and protective plastisol materials over the paint. Olds value is also apparent in the fit and finish of the doors, windows, hood and trunk lids. The precise stitching of fabrics. The snugness of the headlining. The tautness of the carpeting. An Oldsmobile is one tight car.

Take the wheel... get the special feel.

After you've had a chance to read through this '84 Olds catalog, why not take a test drive in an '84 Olds car?

That's when you'll discover what makes an Oldsmobile an Oldsmobile. The ride. The handling. The comfort. The luxury. The quality. You'll find them in any Olds you select.

So after you've looked at all the pictures and

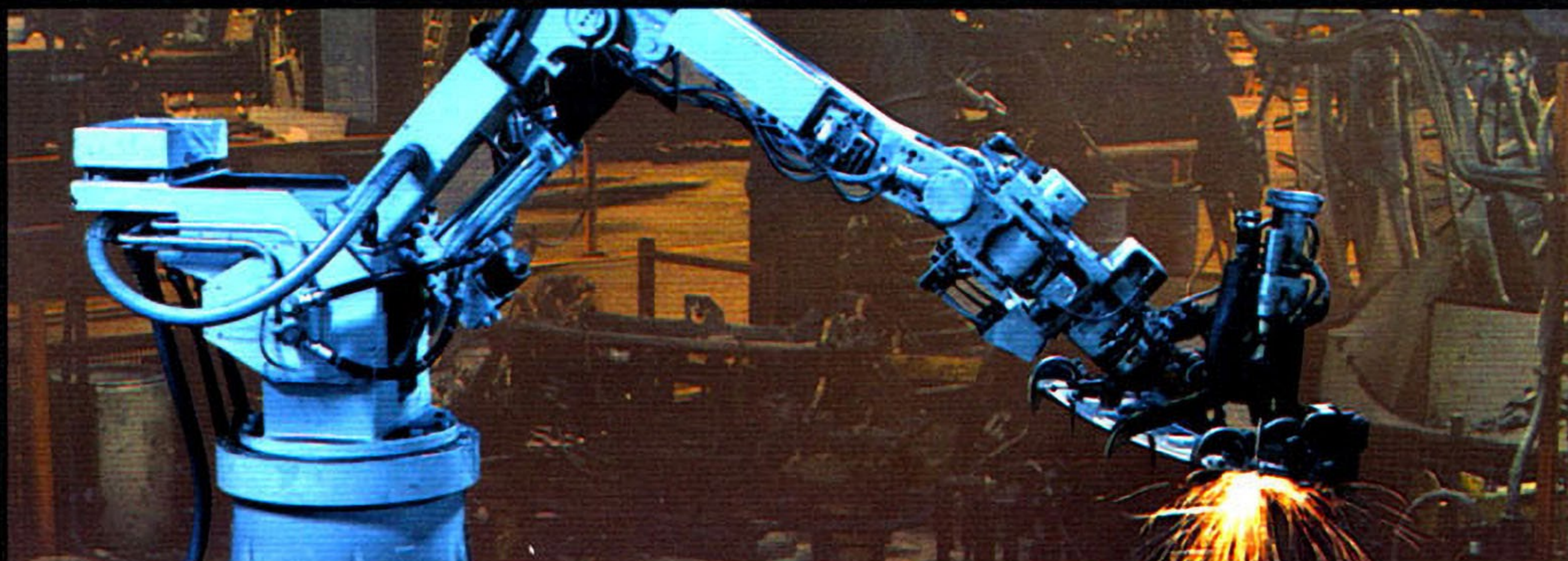
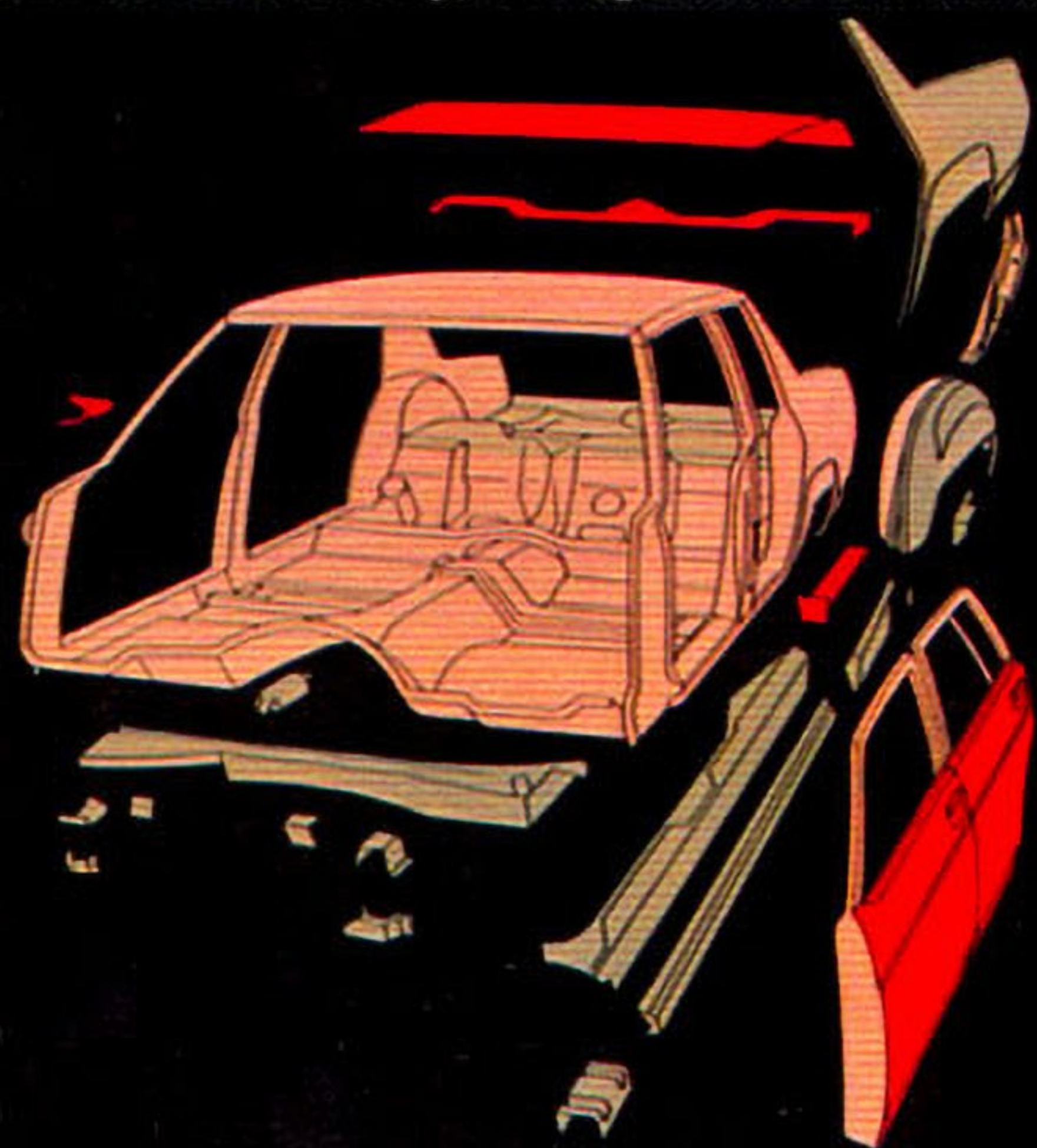
read all the words, why not visit your nearest Olds dealer for a test drive. He'll be happy to let you discover that...

There is a special feel
in an

Oldsmobile

Important: A word about this catalog. We have tried to make this catalog as comprehensive and factual as possible and we hope you find it helpful. However, since the time of printing, some of the information you will find here may have been updated. Also, some of the equipment shown or described throughout this Olds catalog is available at extra cost. Your dealer has details and, before ordering, you should ask him to bring you up-to-date. The right is reserved to make changes at any time, without notice, in prices, colors, materials, equipment, specifications and models. Check with your Olds dealer for complete information.

A word about engines: Some Oldsmobiles are equipped with engines produced by other GM divisions, subsidiaries or affiliated companies worldwide. See your dealer for details. Please refer to the "Fuel Economy Estimate/Engine Supplement Sheet" provided to your dealer for engine source and EPA mileage estimates.



A night on the town. It takes a special car that fits the mood, the place and the people.



There are those special places and special occasions that demand a special kind of car. The Ninety-Eight Regency Brougham Sedan. Smooth and sophisticated. Thoroughly at ease in fine surroundings. It makes for both a dramatic entrance as well as exit. The next time there's a special affair, look around you. You'll find other Regency owners enjoying that same feeling of pride.



■ NINETY-EIGHT REGENCY BROUGHAM SEDAN

This top-of-the-line Oldsmobile represents a happy marriage of logic and luxury. It means you can lose your heart without losing your head.

Losing your heart to a Ninety-Eight Regency Brougham is easy to do. Take in those impressive lines, the elegantly appointed interiors, and, likely as not, it's love at first sight.

Yet, even though you lose your heart, your sense of values is not compromised. Not at all. Consider all that you get in Oldsmobile's

top-of-the-line luxury car. Power steering and power brakes. Power seat, power windows and power door locks. Automatic transmission and air conditioning. Even cornering lamps, a convenient trip odometer and more.

Now consider the price. Some luxury cars cost much more. And, here you get a ride as

luxurious as the car itself. Its Pliacel shocks and full-coil spring suspension smooth the way.

A 5.0-liter V8 with 4-speed overdrive automatic transmission is standard. 5.7-liter diesel V8 available (except in California).

Anyway you consider it, Ninety-Eight Regency Brougham is the logical choice in luxury cars.



■ NINETY-EIGHT REGENCY BROUGHAM

You know what it takes to make things right. For you the "thinking man's luxury car" makes sense.

THERE IS A SPECIAL FEEL IN AN OLDSMOBILE



Sure, you like impressive lines, but what about the bottom line? Are you getting what you pay for? You like lavish interiors, but what about quality and solid engineering? Good performance, of course, but what about economy? The more you think about these things, the more a Ninety-Eight Regency makes sense. Why not get all the facts at your nearest Oldsmobile dealer?



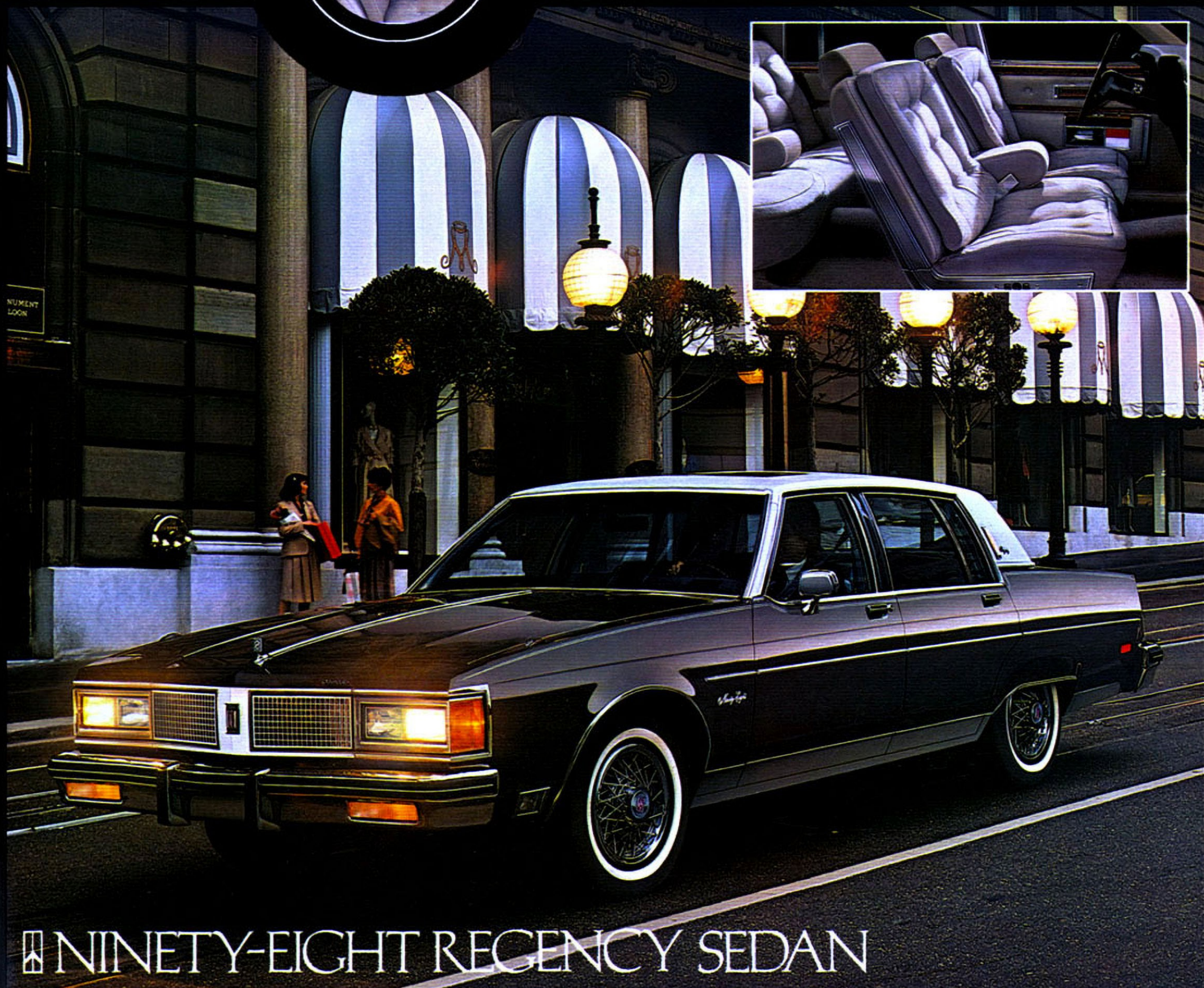
■ NINETY-EIGHT REGENCY COUPE

Style.
You seek it out
in the world of
fashion and in the
cars you drive.

THERE IS A SPECIAL FEEL IN AN OLDSMOBILE



It all comes down to one word: impeccable. It's reflected in your wardrobe, your home decor and your Ninety-Eight Regency Sedan. The styling of a Regency is impeccable — elegant but not ostentatious. The velour interiors, impeccable—luxurious without being pretentious. Regency also has impeccable road manners—soothing, competent, completely in charge. As a test drive will prove.



■ NINETY-EIGHT REGENCY SEDAN



Ninety-Eight Regency facts, figures and features

The logic and luxury start behind this wheel.



Available genuine leather in seating areas; power assists wait on you hand and foot.



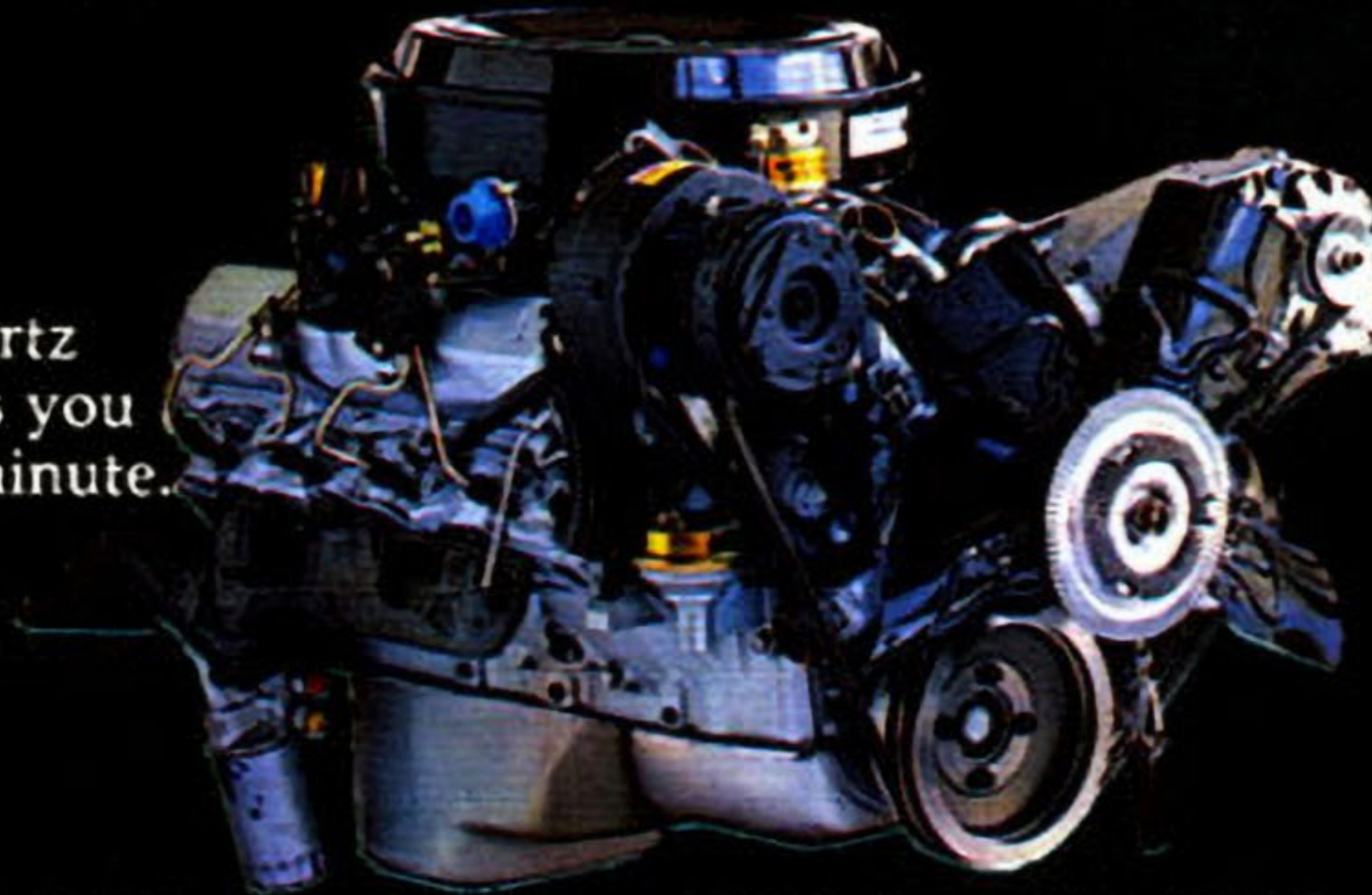
Brougham luxury. Just sit back, relax and enjoy all the elegance that surrounds you.



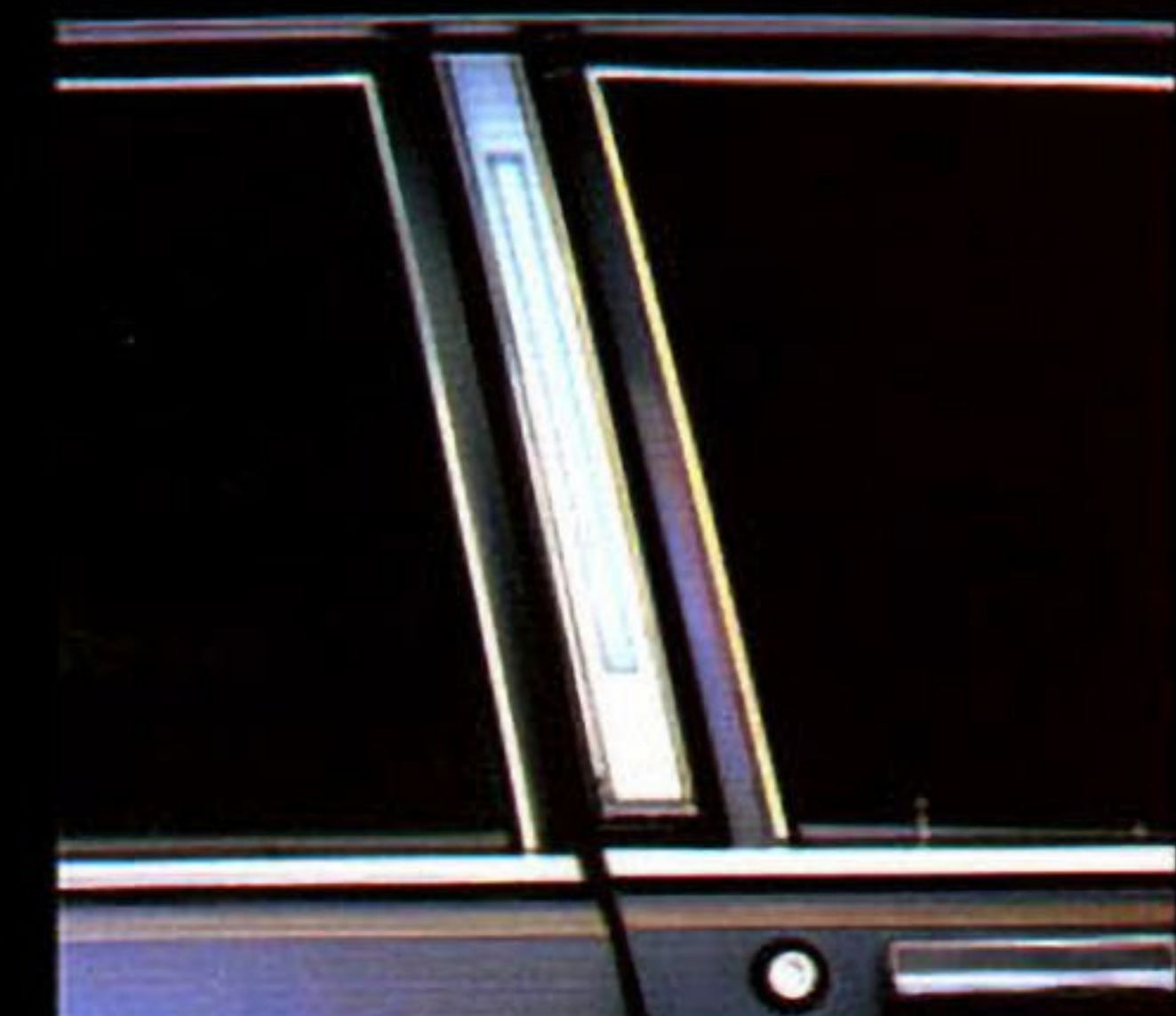
Regency lets you travel in style. 20.5 cubic feet of trunk space gives you room to spare.



Digital quartz clock keeps you up to the minute. Standard.

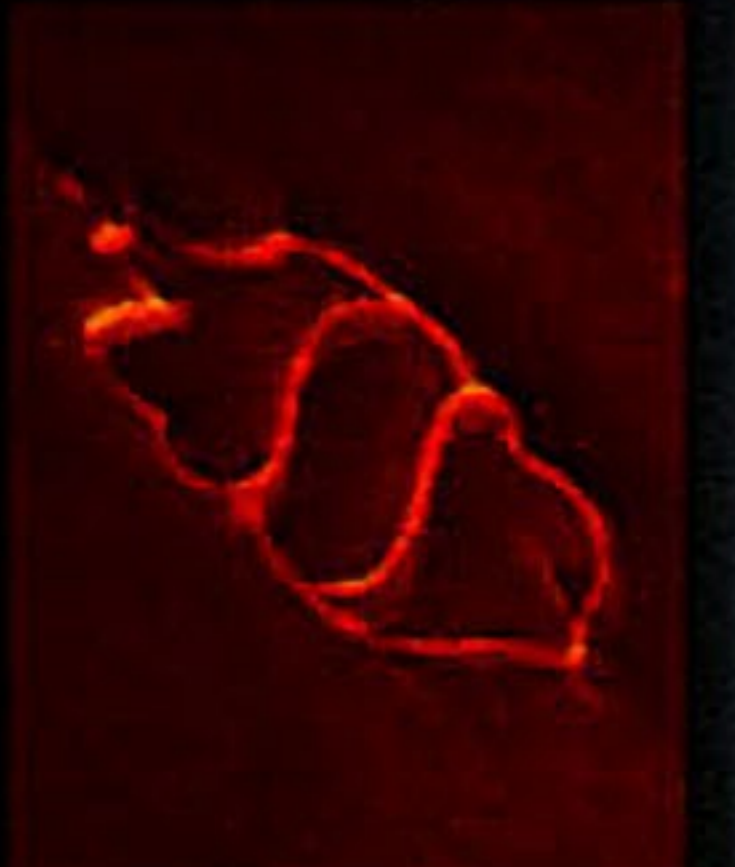


5.7-liter diesel V8 is available (except in California). Takes you a long way on a tank of fuel.

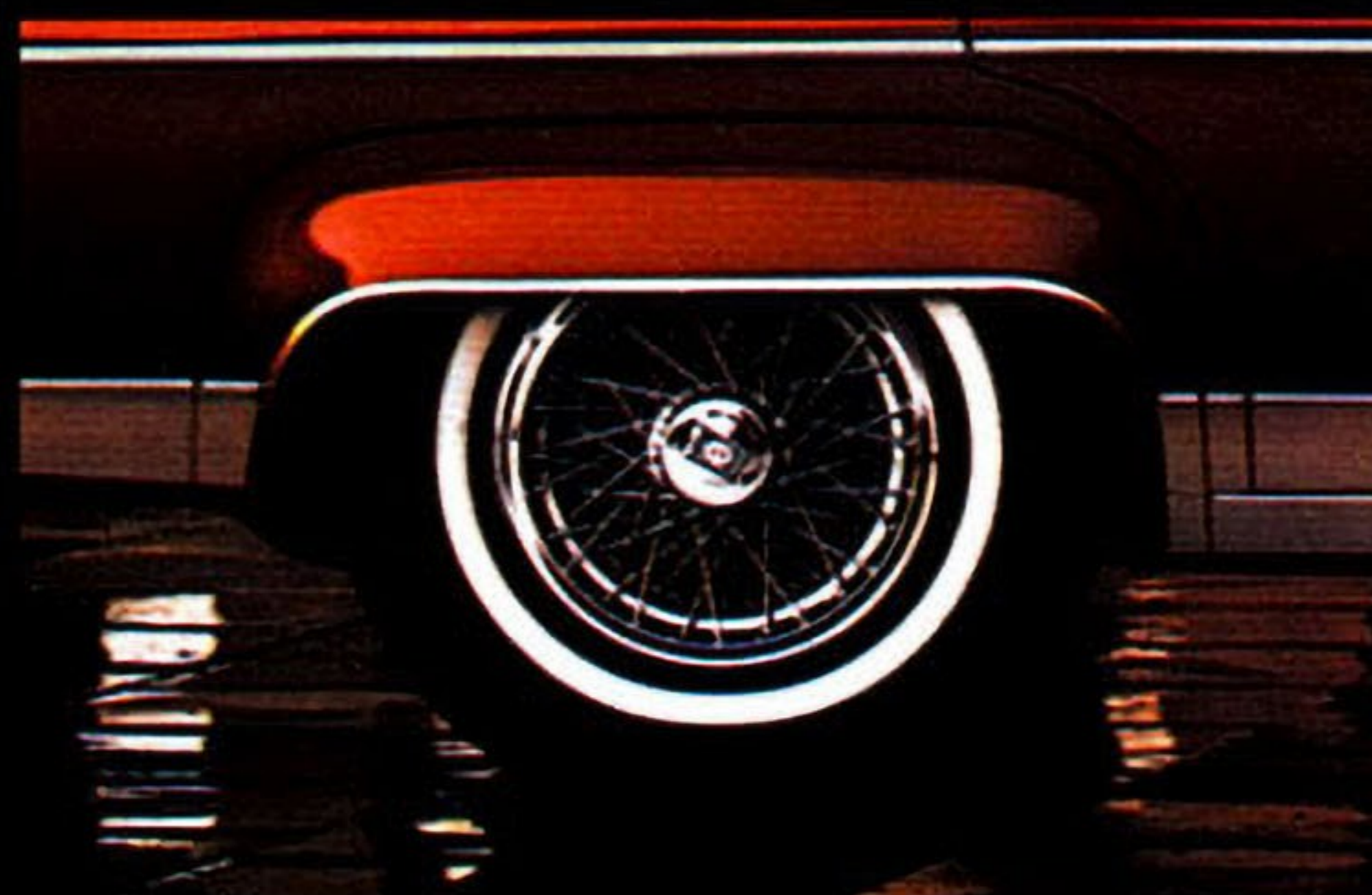


Available opera lamps add a note of sophistication.

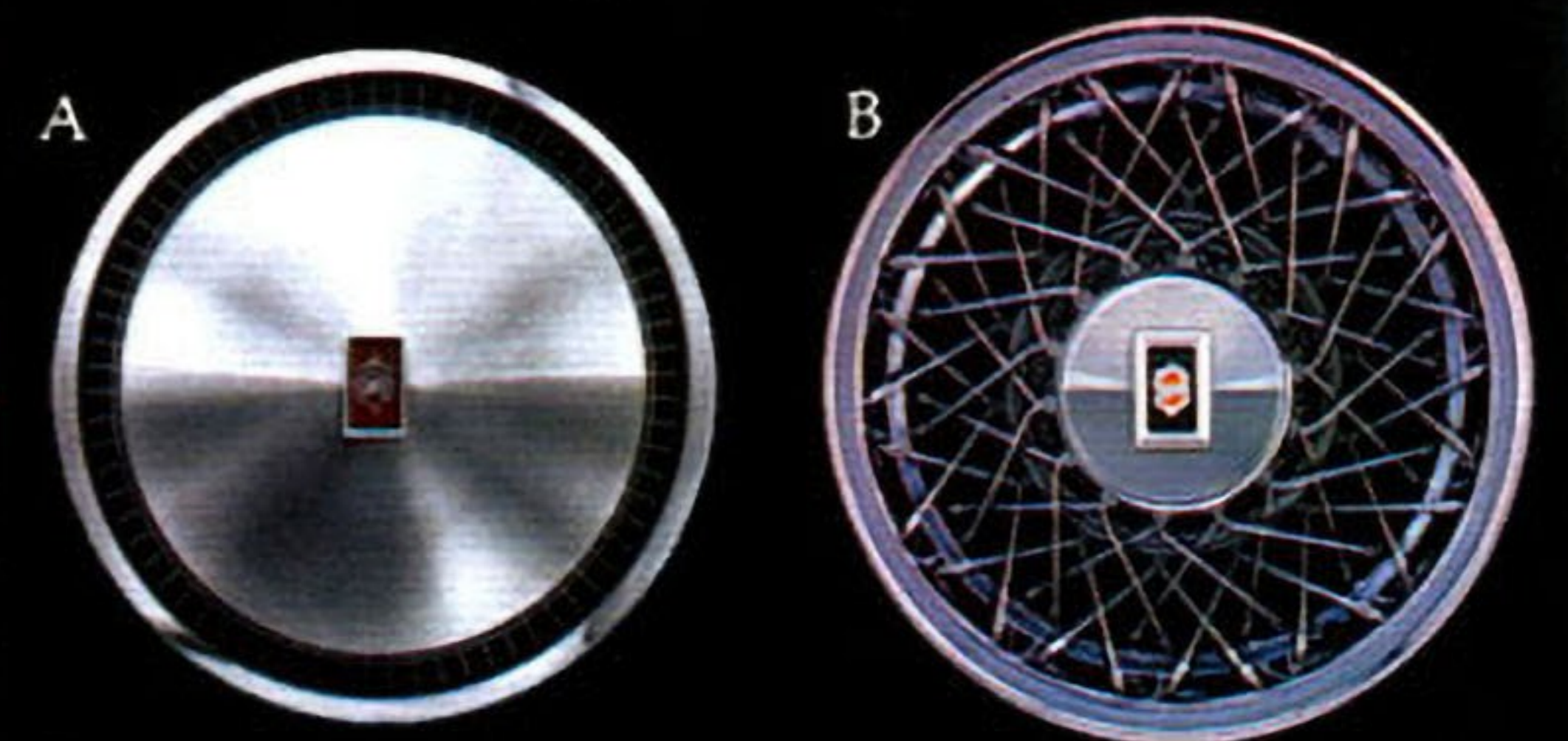
Embroidered Regency elegance.



The convenient remote control switch lets the driver adjust both side-view mirrors as needed. Standard.



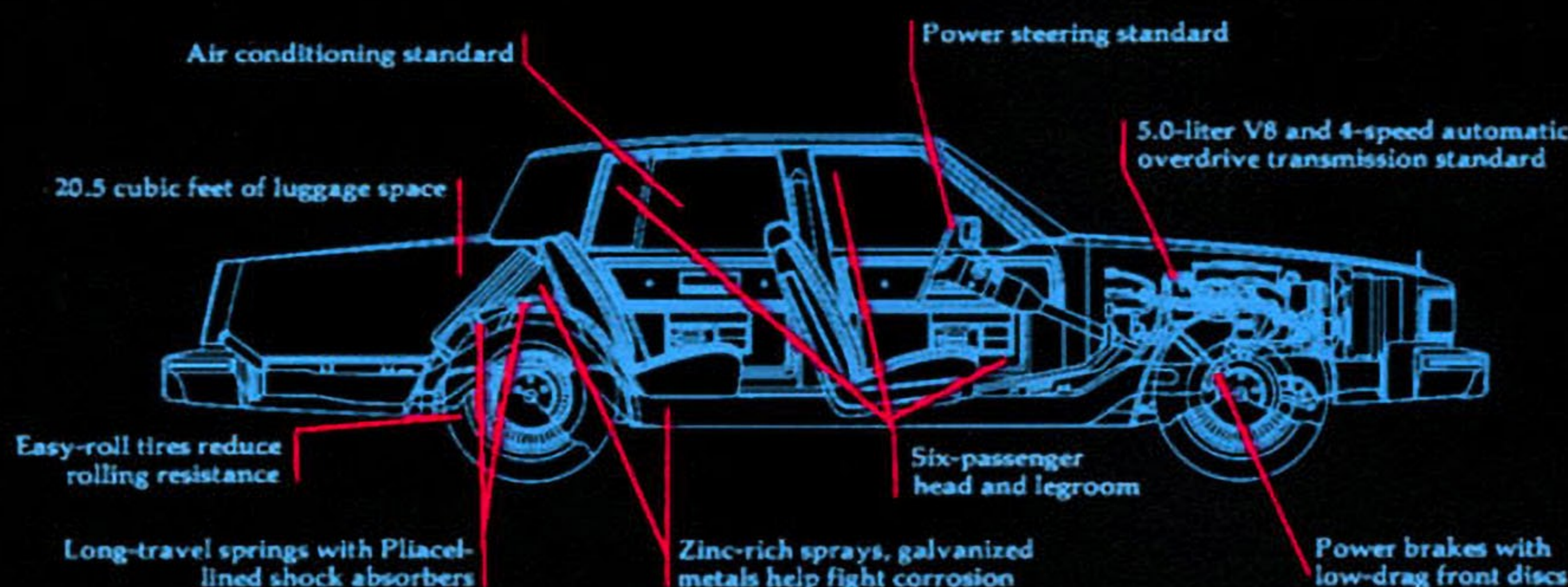
Rear fender skirts are a dashing addition to Ninety-Eight Regency. A touch of class.



(A) Standard Regency discs. (B) Wire wheel discs with locks. (Standard on Brougham, available on Regency.)

Let's get it together...buckle up.

An inside look at Ninety-Eight...



NINETY-EIGHT REGENCY STANDARD EQUIPMENT

Chassis and Body:

■ Computer Command Control ■ Torque-Beam Frame Construction ■ Computer-Selected Full Coil Spring Suspension, Front and Rear ■ Anti-Corrosion Treatments ■ Power Front Low-Drag Disc Brakes ■ Power Steering ■ High-Energy Ignition System ■ Maintenance-Free Battery ■ Dual Remote Control Outside Rearview Mirrors ■ Rear Fender Skirts ■ Space-Efficient Trunk ■ Compact Spare Tire ■ Deluxe Trunk Trim with Spare Tire Cover ■ Bright Deluxe Wheel Discs ■ Bright Roof Drip, Belt Reveal, Rocker Panel and Wheel-Opening Moldings ■ Easy-Roll High-Pressure White-Stripe Tires ■ Lower Body Side Moldings (Regency Brougham Sedan) ■ Headlamps with Tungsten Halogen High-Beams (Regency Brougham Sedan) ■ Sail Panel Opera Lamps.

Interior:

■ Four-Season Air Conditioner ■ Armrests, Front and Rear Seat, Center ■ Wall-to-Wall Cut-Pile Carpeting with Carpeted Lower Door Panels ■ Cigar Lighters, Instrument Panel and Rear Seat ■ Digital Quartz Clock ■ Convenience Package of Lamps, Visor Vanity Mirror and Chime Tones ■ Power Door Locks ■ Door-Pull Handles ■ Hood Lock Release, Interior Operated ■ Instrument Panel Simulated Butterfly Walnut Grain Trim ■ Trip Odometer ■ Combination Dome and Reading Lamp ■ Lamp Switches at all Doors ■ Remote Control Outside Mirrors, Driver and Passenger Side ■ AM-FM Stereo Radio with Two Rear Speakers (May be deleted for credit) ■ Full-Foam Seat Construction ■ Divided Front Seat with Individual Controls ■ 2-Way Power Seat Adjuster, Driver Side ■ Deluxe Seat Belts, Color-Coordinated to Individual Interiors ■ Power Side Windows ■ Deluxe Steering Wheel ■ Soft-Ray Tinted Glass.

NINETY-EIGHT REGENCY POWER TEAMS

Standard Engine:

Liter/Type 5.0/V8
Carburetion 4-Barrel

Available Engines:

Liter/Type 5.7/V8 Diesel

Standard Transmission:

4-Speed Overdrive Auto.
with Torque Conv. Clutch

DIMENSIONS:

Overall Length (in.) 221.1

Wheelbase (in.) 119.0

Luggage Cap. (cu. ft.) 20.5

Fuel Tank, Gas (gals.) 25.0

Fuel Tank, Diesel (gals.) .. 26.0

Coupe/Sedan:

Headroom, front (in.) 38.5/39.5

rear (in.) 37.8/38.1

Legroom, front (in.) 42.2/42.2

rear (in.) 41.3/41.7

Shoulder Room, front (in.) 59.6/59.6

rear (in.) 58.7/59.8

STANDARD EQUIPMENT BY MODEL

Ninety-Eight Regency Brougham Sedan:

■ Engine, 5.0-liter V8, 4-barrel ■ 4-Speed Overdrive Automatic Transmission with Torque Converter Clutch ■ Specific Model Identification ■ Five Velour Standard Trims ■ Simulated Wire Wheel Discs with Locks ■ Full Vinyl Padded Rooftop Cover ■ Front Fender Cornering Lamps ■ Body Side Moldings ■ P215/75R15 Steel-Belted Radial-Ply White-Stripe Tires ■ Tilt-Away Steering Wheel

Ninety-Eight Regency Coupe and Sedan:

■ Engine, 5.0-liter V8, 4-Barrel ■ 4-Speed Overdrive Automatic Transmission with Torque Converter Clutch ■ Five Velour Trims ■ P215/75R15 Steel-Belted Radial-Ply White-Stripe Tires ■ Bright Deluxe Wheel Discs.

NINETY-EIGHT REGENCY/REGENCY BROUGHAM SEDAN

AVAILABLE EQUIPMENT:

□ 6-Way Power Seat Adjusters—Driver and Passenger Sides
□ Reclining Seat Back—Passenger Side Manual, or Power
□ Power Trunk-Lid Lock Release
□ Auxiliary Floor Mats with Carpet Inserts, Front and Rear
□ Luggage Compartment Floor Mat

□ Body Side Moldings—Light Gray (Std. on Brougham)
□ Door-Edge Guards
□ Full Vinyl Padded Roof Covering (Std. on Brougham) (Sedan) and Landau Style Vinyl Covering (Coupe)
□ Electric Rear Window Defogger
□ Tempmatic Air Conditioner
□ Sail Panel Reading Lamps (Sedans)
□ Automatic Power Door Locks
□ Lower Body Side Moldings (Standard Regency Brougham)
□ Front Door Locks and Interior Illumination Package
□ Electrically Operated Outside Rearview Mirrors, Driver and Passenger Side
□ Front Seat Litter Container
□ Illuminated Visor Vanity Mirror, Passenger Side
□ Body Side Accent Stripes
□ Engine Block Heater
□ Diesel Engine Block and Fuel-

Line Heater

□ Limited Slip Differential
□ Automatic Cruise Control with Resume and Acceleration Features
□ Tilt-Away Steering Wheel (Std. on Brougham Sedan)
□ Tilt-and-Telescope Steering Wheel
□ Simulated Wire Wheel Discs with Locks (Std. on Regency Brougham Sedan)
□ Pulse Wiper System
□ Combination Dome and Dual Lens Reading Lamp
□ Body Side Two-Tone Paint Scheme
□ P225/75R15 Steel-Belted Radial-Ply White-Stripe Tires
□ High-Capacity Battery
□ Electric Sliding Glass Astrorooftop (Headroom is reduced with this option)
□ Puncture-Sealing Tires
□ Tungsten Halogen Headlamps (High-Beams) (Std. on Regency Brougham Sedan)
□ Cornering Lamps (Std. on Regency Brougham Sedan)
□ Instrument Panel Gauge Cluster
□ Radios and Tape Players (See Page 31)
□ Exterior Lamp Monitor, Front and Rear
□ Special Firemist Paints, in Autumn Red, Medium Sand Gray, Saddle Tan
□ Reminder Package, Indicators
□ Automatic Leveling System
□ High-Capacity Engine Cooling Systems
□ Heavy-Duty Wheels
□ Custom Leather Trims in seating areas Maple Red and Sable Brown (Regency Coupe and Sedan); Sand Gray and Sable Brown (Regency Brougham Sedan)
□ Trailer Electrical Wiring Harness

Let's get it together...buckle up.

*See EPA mileage estimates in accompanying Fuel Economy Estimate/Engine Supplement Sheet.

This family
car is as
generous with
the family as
you are.



Here's a car that goes all out to provide your family with everything you could ever hope to find in a family car. Just look at all that style outside, all that luxury and comfort inside. Wouldn't your family feel right at home in those spacious velour interiors? Enjoying that smooth coil spring ride? When it comes to families, Delta 88 Royale Brougham is generous to a fault.



DELTA 88 ROYALE BROUGHAM SEDAN

Consider it
from any angle that's
important to you. You'll find that
here's the family car that
didn't forget the family.

If you were making a checklist of things you'd
look for in a family car, we think we have a
pretty good idea of what they would be. Let's see.
"It should be priced for family budgets."
That's Delta 88. It is literally one of the
best automotive values around.
"It should have lots of room." That's Delta

88 again. It carries six in stretch-out comfort.
And, the trunk carries 20.8 cubic feet of luggage.
"It should look nice, inside and out."
Delta 88 will do your family proud. The
Winslow velour interior (shown) comes in
Brougham models.
"It should get good mileage." Delta 88 does.

A 3.8-liter V6 is standard. Two V8s available:
5.0-liter gas V8 and 5.7-liter diesel V8. (Diesel
V8 not available in Calif.)
"It should offer durability and value." The
lasting kind you'll find in a Delta 88. It's there
for you to enjoy every mile you drive. It also
has traditionally high resale value.



DELTA 88 ROYALE BROUGHAM

It's so popular
with families
because it takes
such good care
of families.



Year after year, families just like yours go out and buy a Delta 88 Royale Brougham. It's a perennial favorite, one of the most popular full-size cars in America. Why? Despite all its style and luxury, its plush room-for-six interiors, a Delta 88 Royale Brougham is very affordable. And, it has traditionally high resale value. The family car. For *your* family. Try one on for size soon.



DELTA 88 ROYALE BROUGHAM COUPE

After 20 years,
everyone was a little
nervous. No wonder
you felt good arriving
as you did.

THERE IS A SPECIAL FEEL IN AN OLDSMOBILE



It's a confidence builder, that Oldsmobile Delta 88 Royale. It will deliver you to your destination feeling cool, calm and totally collected. Relaxed and unruffled, too. It's a result of the way Delta 88 Royale caters to your needs with its stylish lines, rich velour fabrics, deep cut-pile carpeting and tasteful appointments. Who wouldn't feel confident arriving in a car like this?



DELTA 88 ROYALE COUPE

After long, busy days, you appreciate the comfort of a smooth, quiet family car. Shhh. So do others.

THERE IS A SPECIAL FEEL IN AN OLDSMOBILE



A trip to Disney World. Or a visit to Grandma's house. At the end of the day, everyone looks forward to the comfort of the Delta 88 Royale. Those full-foam seats are just the ticket for tired bodies. So is the gentle action of the Pliacel shocks and the coil spring suspension. Sound-absorbing materials add to the quiet comfort. The value is comforting, too, and so is the affordable price.



 DELTA 88 ROYALE SEDAN

Photographed at the Magic Kingdom at Walt Disney World®

Delta 88 Royale facts, figures and features

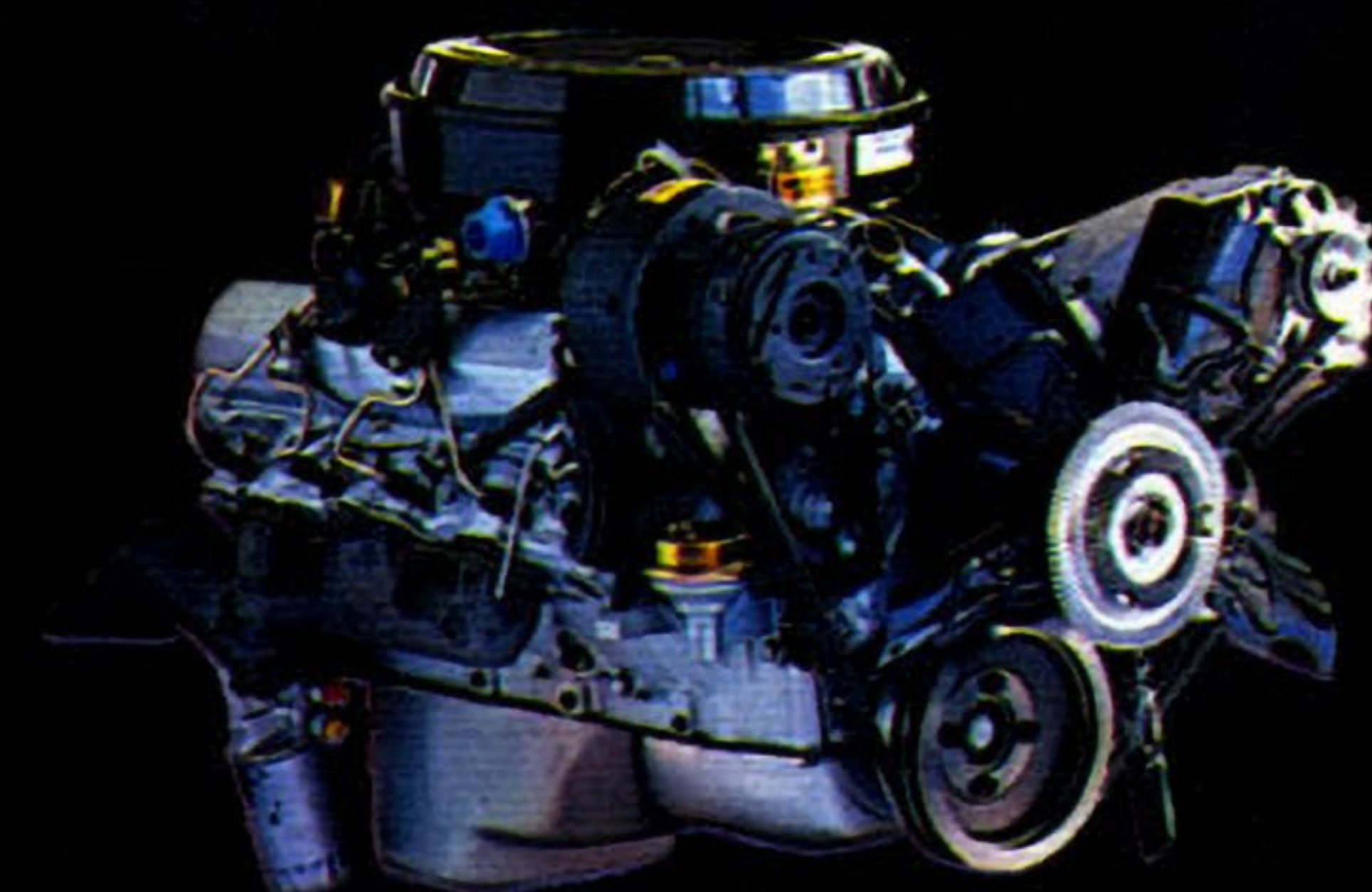


The deluxe steering wheel highlights the finely-crafted instrument panel.



You can take it with you! 20.8 cubic feet of trunk space makes family trips more enjoyable.

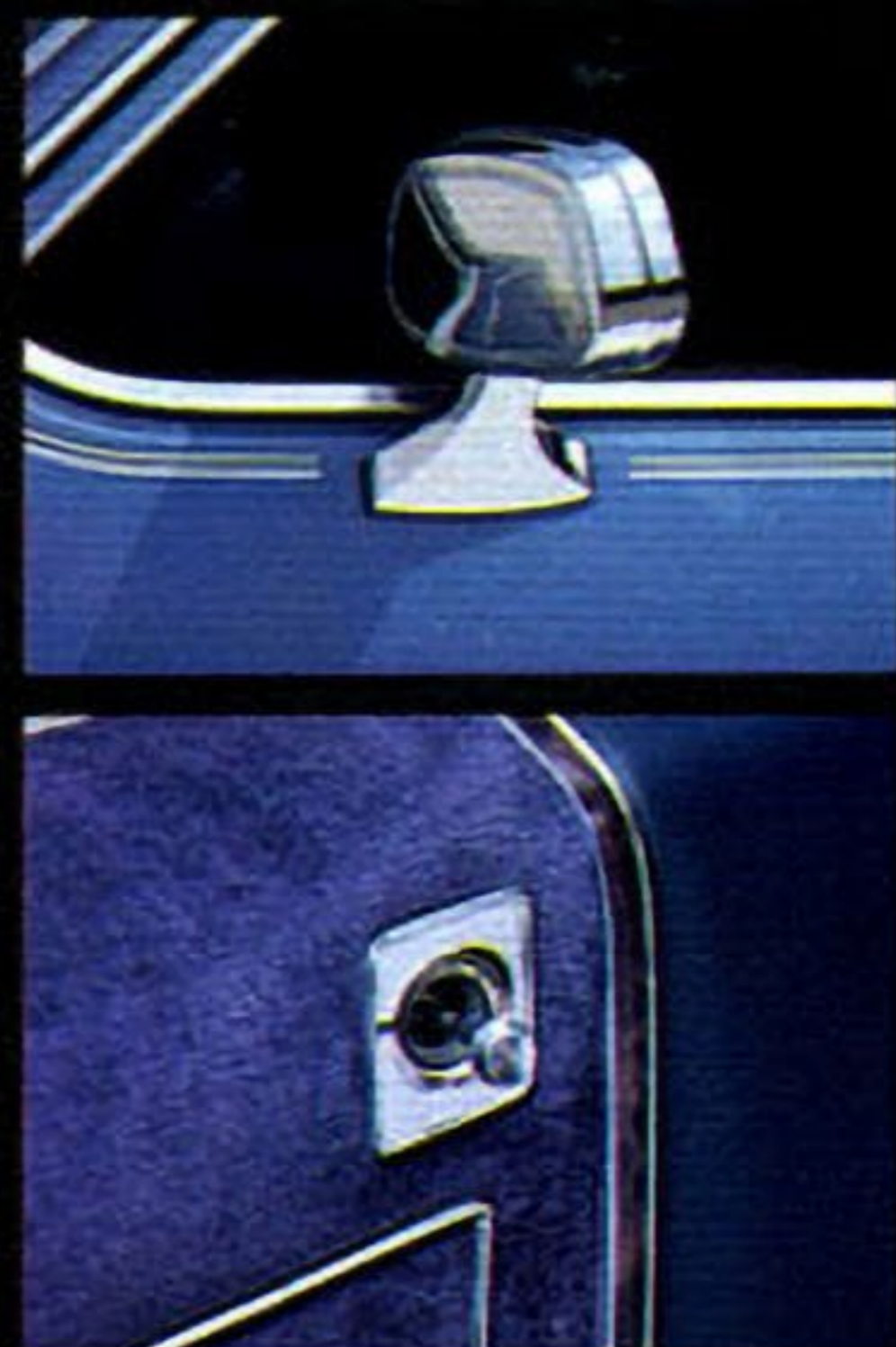
Buckle up the little ones and give them the protection they need. Don't forget to buckle up yourself. It's just good sense.



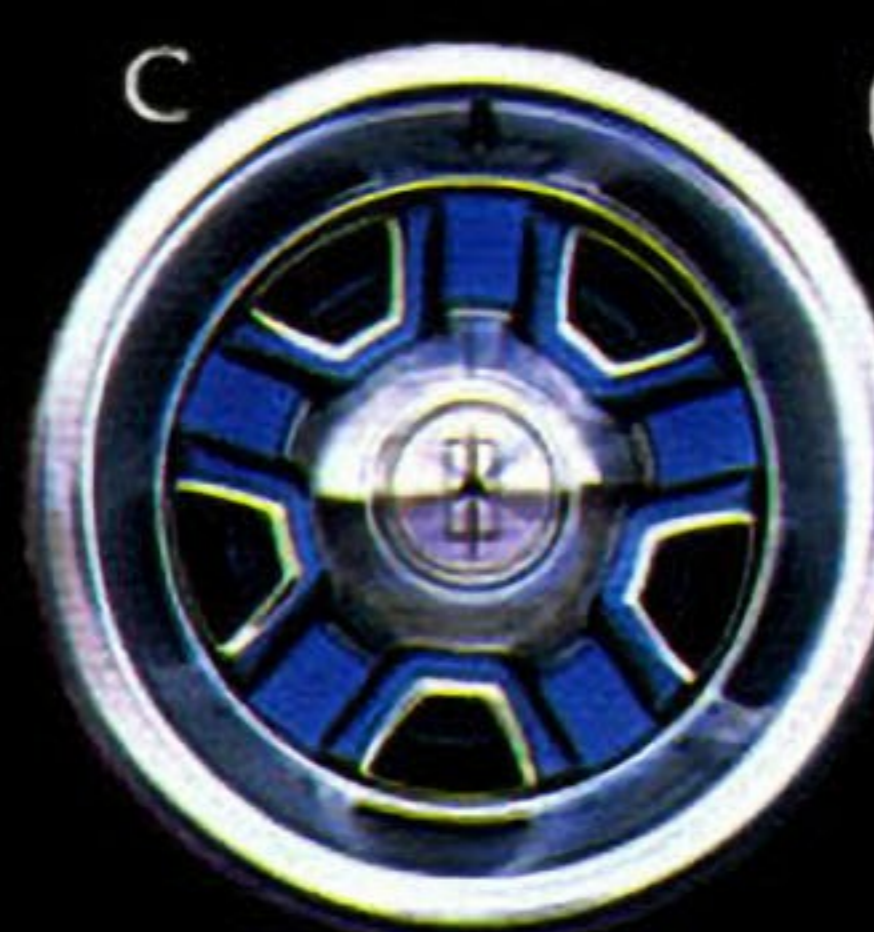
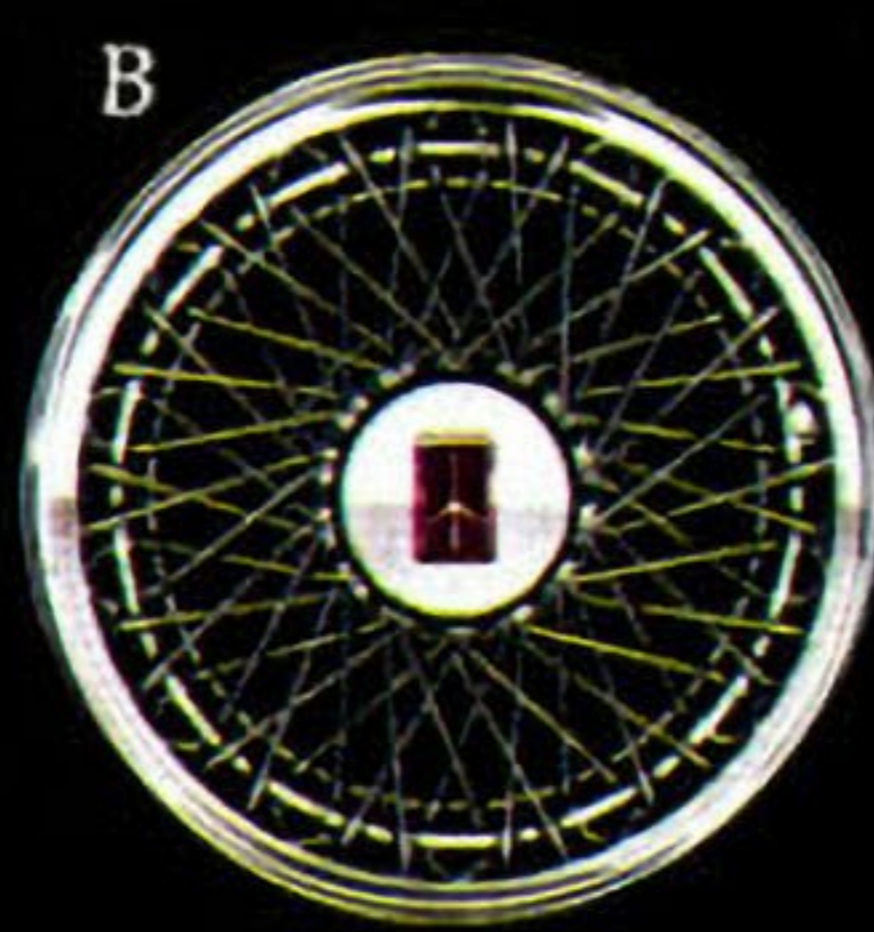
Get the power to pass and the fuel efficiency you want with this 5.7-liter diesel V8 engine. Available on all Delta 88s (except in Cal.).



Available side pillar lamps add an extra degree of sophistication.

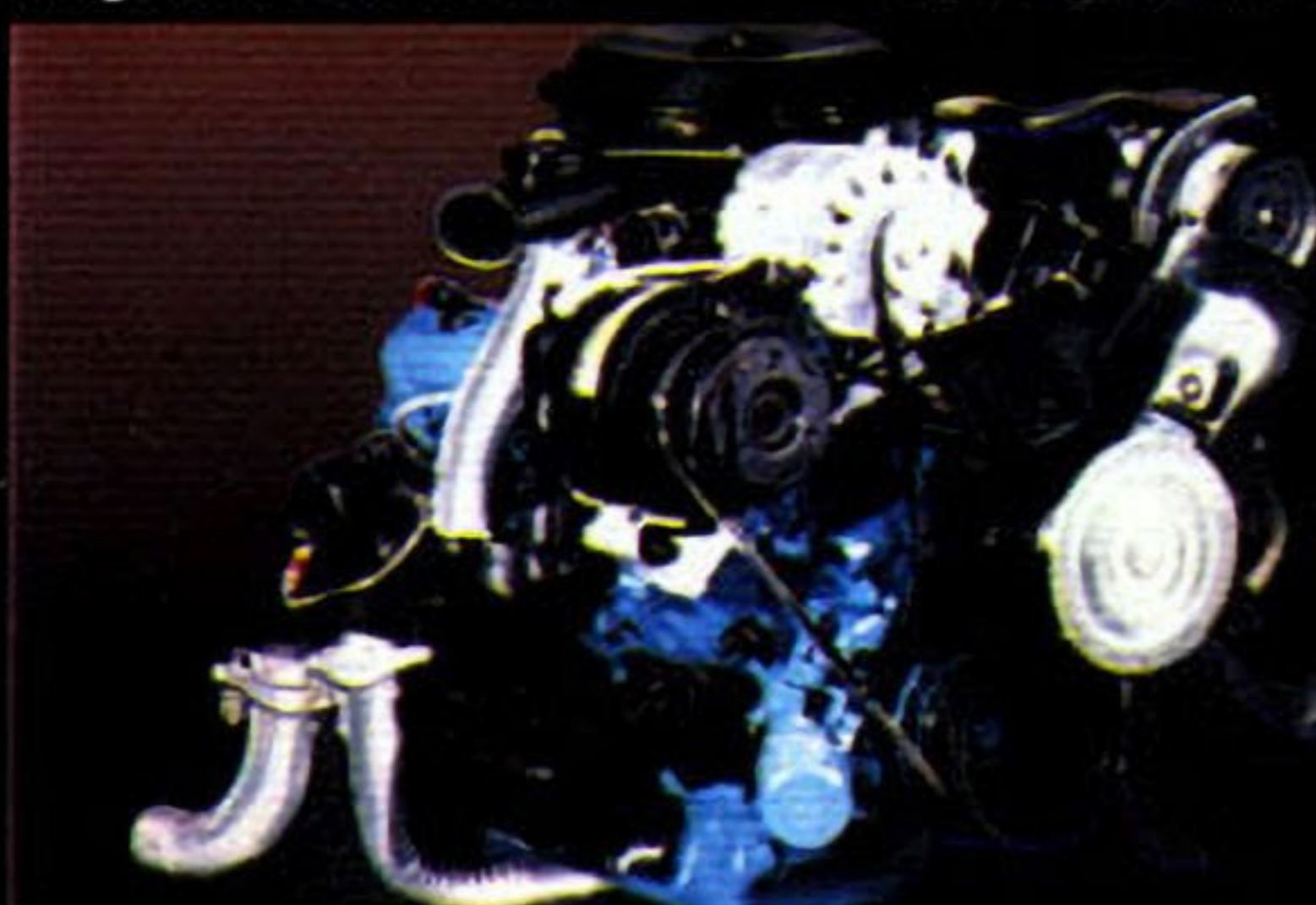


Remote control side-view mirror is standard. Nice for multiple-driver families.



(A) Standard discs. (B) Available wire wheel discs with locks. (C) Available super stock wheels with matching body color.

The ride is smooth, quiet with computer-selected coil springs.

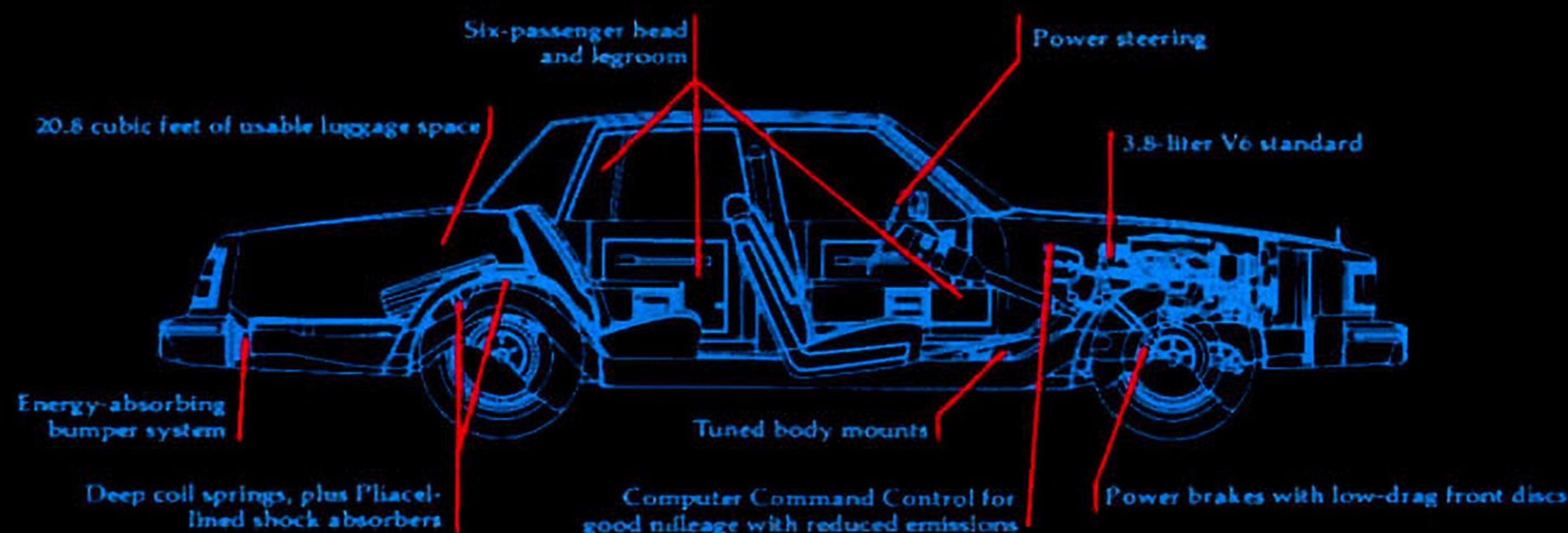


3.8-liter V6 fuel economy is standard. 5.0-liter V8 available



Let's get it together... buckle up.

An inside look at Delta 88...



DELTA 88 STANDARD EQUIPMENT

Chassis and Body:

- Computer Command Control ■ Torque-Beam Frame Construction
- Computer-Selected Full Coil Spring Suspension, Front and Rear ■ Extensive Anti-Corrosion Treatments ■ Low-Drag Power Front Disc Brakes
- Power Steering ■ High-Energy Ignition System ■ Delcotron ■ Compact Spare Tire
- Side-Frame Jack ■ Bumper Rub Strips, plus Integral Guards, Front and Rear
- Recessed Windshield Wipers
- Front-End Panel Stand-Up Ornament ■ Rearview Mirror Remote Control, Driver Side
- Roof Drip, Rocker Panel and Wheel-Opening Moldings
- Bright Deluxe Wheel Discs ■ Easy-Roll High-Pressure Tires.

Interior:

- Full-Foam Seat Construction ■ Armrests, Front and Rear ■ Cut-Pile Carpeting, Wall-to-Wall with Carpeted Lower Door Panels ■ Simulated Butterfly Walnut Grain Instrument Panel Trim ■ Cigar Lighter ■ Door-Actuated Courtesy Lamps ■ Deluxe Steering Wheel ■ Headlamp-On Warning Sound ■ Inside Day-Night Rearview Mirror
- Interior Hood Lock Release ■ Deluxe Seat Belts
- Flo-Thru Ventilation.

STANDARD EQUIPMENT BY MODELS

Delta 88 Royale Brougham Coupe and Sedan:

- Engine, 3.8-liter V6, 2-Barrel ■ Transmission, Automatic with Torque Converter Clutch and Column Shift
- Pillar Opera Lamps (Coupe) ■ Body Side Moldings Color-Coordinated to Lower Body (If Vinyl Rooftop is Ordered, Moldings are Color-Keyed to Rooftop Color)
- Belt Reveal, Rocker Panel and Wheel-Opening Moldings ■ Bright Roof Drip Moldings ■ P205/75R15 Steel-Belted Radial-Ply Blackwall Tires ■ Divided Front Seat with Individual Controls in Five Colors of Velour

- Convenience Package of Lamps, Visor Vanity Mirror and Chime Tones.

Delta 88 Royale Coupe and Sedan:

- Engine, 3.8-liter V6, 2-Barrel ■ Transmission, Automatic with Torque Converter Clutch and Column Shift
- Rocker Panel, Wheel-Opening and Body Side Moldings
- Body Side Moldings Color-Coordinated with Lower Body (If Vinyl Top is Ordered, Moldings are Color-Keyed to Top Color) ■ P205/75R15 Steel-Belted Radial-Ply Blackwall Tires ■ Custom Bench Front Seat with Center Armrest in Five Colors of Velour.

DELTA 88 AVAILABLE EQUIPMENT:

- 6-Way Power Seat Adjuster (Bench)
- 6-Way Power Seat Adjuster (Divided Seat, Driver and Passenger Sides)
- Divided Seat, with Individual Controls (Royale models)
- Reclining Seat Back — Passenger Side (Royale/Royale Brougham models)
- Soft-Ray Tinted Glass
- Power Door Locks
- Power Side Windows
- Power Trunk-Lid Lock Release
- Auxiliary Floor Mats, Front and Rear with Carpet inserts
- Deluxe Luggage Compartment Trim and Spare Tire Cover

- Door-Edge Guards
- Pulse Wiper System
- Electric Sliding Astrorooft in Tinted Glass (Headroom is reduced with this option)
- Padded Vinyl Landau Roof Cover (Coupes); Full Vinyl Rooftop Cover (Sedans)
- Body Side Moldings (Standard on Royale and Royale Brougham)
- Belt Reveal Moldings (Standard on Royale Brougham)
- Four-Season or Tempmatic Air Conditioners
- Electric Rear Window Defogger
- Front Door Locks and Interior Illumination Package
- Color-Coordinated Remote and Manual Control Mirrors, Driver and Passenger Side
- Automatic Cruise Control with Resume and Acceleration Features
- Limited Slip Differential
- Engine Block Heater
- Diesel Engine Block and

Fuel Line Heater

- Tilt-Away or Tilt-and-Telescope Steering Wheel
- Simulated Wire Wheel Discs with Locks
- Sport-Style Wheels, Color-Keyed to Body
- Convenience Group, includes Lamps, Visor Vanity Mirror and Chime Tones (Std. on Royale Brougham)
- Combination Dome and Dual Lens Reading Lamp
- Electric Outside Mirrors, Driver and Passenger Side
- Cornering Lamps
- Tungsten Halogen Headlamps (High-Beams)
- High-Capacity Battery
- Digital Quartz or Regular Clocks
- Trip Odometer
- Exterior Lamp Monitor, Front and Rear
- Instrument Panel Reminder Package
- Two-Tone Paint Scheme, Lower Body
- Firm Ride and Handling Package
- Automatic Leveling System
- High-Capacity Engine Cooling Systems
- Radios and Tape Players (See page 31)
- Tires, P205/75R15 Steel-Belted Radial-Ply White-Stripe
- Tires, P215/75R15 Steel-Belted Radial-Ply White-Stripe
- Puncture-Sealing Tires
- Litter Container
- Body Side Accent Stripes
- Trailer Electrical Wiring Harness, 5-Wire

Let's get it together...buckle up.

*See EPA mileage estimates in accompanying Fuel Economy Estimate/Engine Supplement Sheet.

It does chores
—and the town
—with the
same elegant
flair.

THERE IS A SPECIAL FEEL IN AN OLDSMOBILE



It has 87.2 cubic feet of cargo space with the second seat down. An extra storage compartment with lock. Three-way tailgate to ease loading. That's the working side of Custom Cruiser. After work, it's full-foam seats with rich velour fabrics (or glove-soft vinyl) and great Olds ride. 5.0-liter V8, 4-speed overdrive automatic transmission, standard. 5.7-liter diesel V8 available. (Except Calif.)



OLDSMOBILE CUSTOM CRUISER

Custom Cruiser facts, features and specs

CUSTOM CRUISER STANDARD EQUIPMENT Chassis and Body:

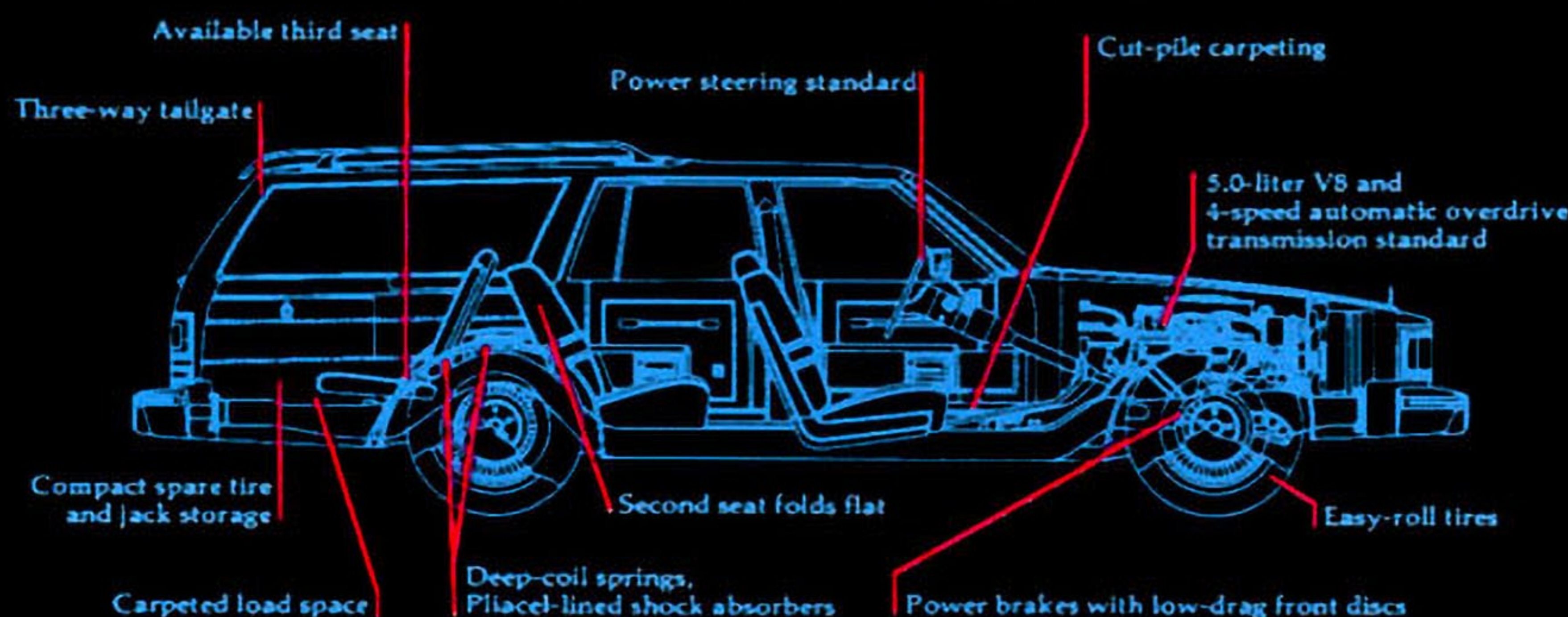
■ Computer Command Control ■ Computer-Selected Full Coil Spring Suspension, Front and Rear ■ Extensive Anti-Corrosion Treatments ■ Low-Drag Power Front Disc Brakes ■ Power Steering ■ High-Energy Ignition System ■ Easy-Rolling High-Pressure Tires ■ Heavy-Duty Wheels ■ Bumper Impact Strips with Integral Bumper Guards, Front and Rear ■ 3-Way Tailgate Operation ■ Side-Frame Jacking System ■ Spare Tire Extractor.

Interior:

■ Armrests, Front and Rear ■ Ashtrays, Instrument Panel and Rear Seat ■ Headlamp-On Warning ■ Cigar Lighter ■ Door-Pull Handles, Front and Rear ■ Wall-to-Wall Cut-Pile Carpeting, including Lower Door Panels and Cargo Area ■ Hood Lock, Interior Operated ■ Simulated Butterfly Walnut Grain Instrument Panel Trim ■ Electric Rear Window Control on Instrument Panel ■ Remote Control Outside Mirror, Driver Side ■ Rear Storage Compartment with Lock ■ Deluxe Seat Belts ■ Flo-Thru Ventilation.

CUSTOM CRUISER 2-SEAT WAGON
Additional Standard Equipment:
■ Engine, 5.0-liter V8, 4-barrel ■ 4-Speed Overdrive Automatic Transmission with Torque Converter Clutch ■ Armrest Bench Front Seat with Five Velour and Two Doeskin Vinyl Trims to choose from ■ P225/75R15 Steel-Belted Radial-Ply Blackwall Tires ■ Deluxe Wheel Discs

An inside look at Custom Cruiser...



CUSTOM CRUISER POWER TEAMS

Standard Engine:*

Liter/Type 5.0/V8
Carburetion 4-Barrel

Available Engine:*

Liter/Type 5.7/V8 Diesel

Standard Transmission:*

4-Speed Overdrive Auto. with Torque Conv. Clutch

DIMENSIONS:

Overall Length (in.) 220.3

Wheelbase (in.) 116.0

Cargo Cap. (cu. ft.) 87.2

Fuel Tank, Gas (gals.) 22.0

Fuel Tank, Diesel (gals.) 22.0

Headroom, (front in.) 39.6

(rear in.) 39.3

Legroom, (front in.) 42.2

(rear in.) 37.8

Shoulder Room, (front in.) 60.6

(rear in.) 60.5

CUSTOM CRUISER AVAILABLE EQUIPMENT:

- ☐ 6-Way Power Seat Adjuster, Driver and Passenger Side
- ☐ Divided Front Bench Seat with Individual Controls
- ☐ Rear-Facing Third Seat
- ☐ Reclining Seat Back, Manual Passenger Side
- ☐ Power Door Locks, including Tailgate
- ☐ Power Side Windows
- ☐ Body Side Accent Stripes
- ☐ Lower Body Side Moldings
- ☐ Body Side and Tailgate Simulated Walnut Grain Panels
- ☐ Auxiliary Floor Mats with Carpet Inserts, Front and Rear
- ☐ Rear Window Electric Defogger
- ☐ Pulse Wiper System

- ☐ Four-Season or Tempmatic Air Conditioner
- ☐ Soft-Ray Tinted Window Glass
- ☐ Body Side Moldings
- ☐ Combination Dome and Reading Lamp
- ☐ Front Door Lock and Interior Illumination Package
- ☐ Electrically Operated Outside Mirrors, Driver and Passenger Side
- ☐ Illuminated Visor Vanity Mirror, Passenger Side

- ☐ Limited Slip Differential
- ☐ Engine Block Heater
- ☐ Diesel Engine Block and Fuel-Line Heater
- ☐ Automatic Cruise Control with Resume Feature
- ☐ Tilt-Away or Tilt-and-Telescope Steering Wheel
- ☐ Simulated Wire Wheel Discs with Locks
- ☐ Puncture-Sealing Tires
- ☐ Convenience Group, including Lamps, Visor Vanity Mirror and Chime Tones
- ☐ Color-Coordinated Outside Remote Control Mirrors — Driver and Passenger Side
- ☐ Tungsten Halogen Headlamps, High-Beams
- ☐ Front Fender Cornering Lamps
- ☐ Digital Quartz or Regular Clocks
- ☐ Instrument Panel Gauge Cluster
- ☐ Trip Odometer
- ☐ Exterior Lamp Monitors, Front and Rear
- ☐ Rear Bumper Step, included in Rear Seat Package
- ☐ Rooftop Luggage Carrier, includes Rear Window Air Deflector (Optional as shown)
- ☐ Reminder Package, Indicators
- ☐ Firm Ride and Handling Package
- ☐ Automatic Leveling System
- ☐ High-Capacity Engine Cooling System
- ☐ Radios and Tape Players (See Page 31)
- ☐ Tires, P225/75R15 Steel-Belted Radial-Ply White-Stripe
- ☐ High-Capacity Battery
- ☐ Trailer Electrical Wiring Harness



Talk about roomy! Fold-down third seat is available to provide 8-passenger capacity when you need it.



Custom Cruiser doesn't scrimp on space. There's 87.2 cubic feet of room with second seat down.



A roomy underfloor storage compartment is standard.

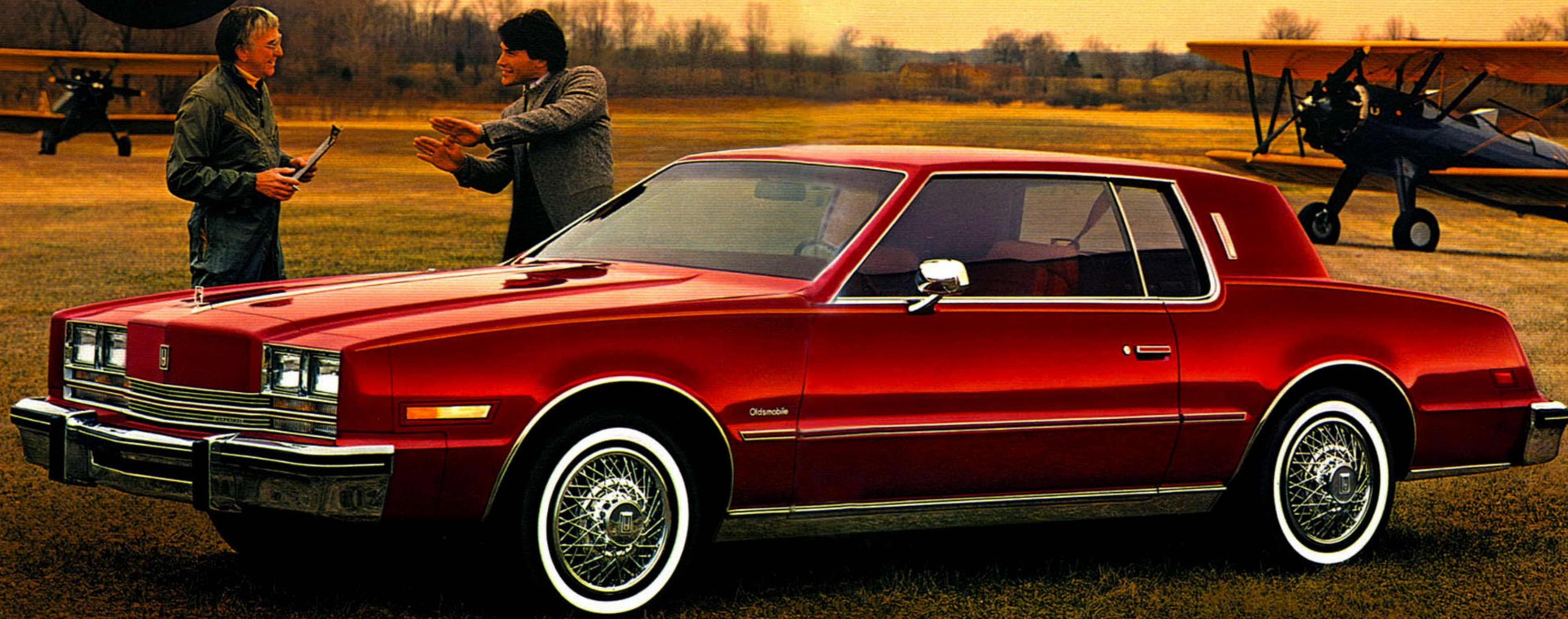
*See EPA mileage estimates in accompanying Fuel Economy Estimate/Engine Supplement Sheet.

Let's get it together... buckle up.

In a world of look-alikes, this personal luxury car not only stands apart, it stands alone.



Here's the car that pioneered the modern day version of front-wheel drive with its impressive traction on snow and rain. And its high style with an uncommon look. Toronado has always set the pace. A 4.1-liter V6 is standard, a 5.0-liter V8 available. A zesty 5.7-liter diesel V8 engine is also available (except in California). 4-speed overdrive automatic transmission is standard on all engines.



■ TORONADO BROUGHAM COUPE

Slip inside
and discover how
thoroughly Toronado
provides for the
creature comforts.

Like air conditioning and automatic transmission. Cruise Control and Tilt-Wheel Steering. Power steering, power brakes, power seat and power door locks. An AM-FM stereo radio (which may be deleted for credit). They're all standard on Toronado. For comfort, there are flat floors and spacious passenger accommodations. A Delco-GM/Bose music system which provides uncanny fidelity of sound is available.



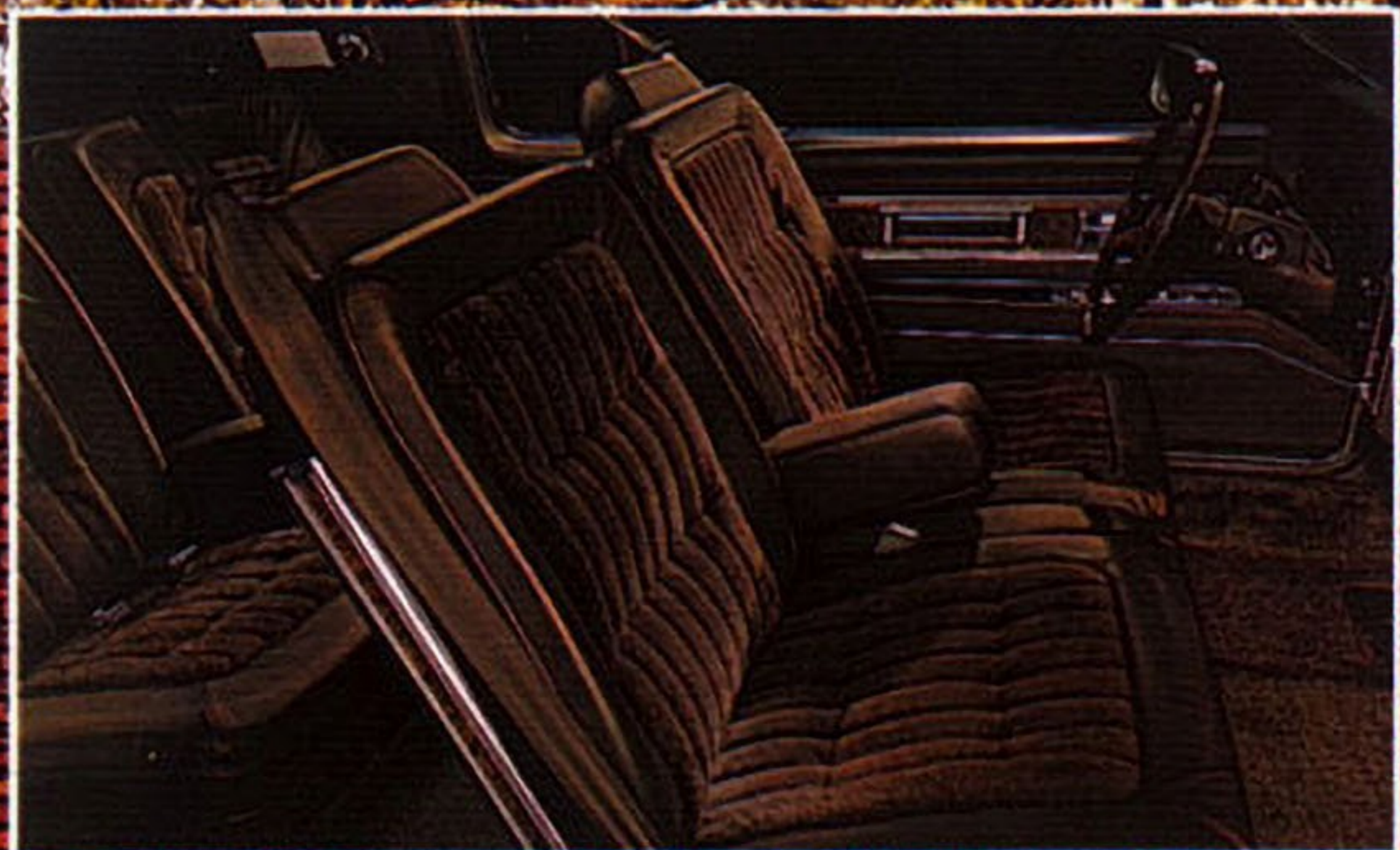
▣ TORONADO BROUGHAM COUPE

A car this unique
will probably
become a prized
addition for the
serious collector.

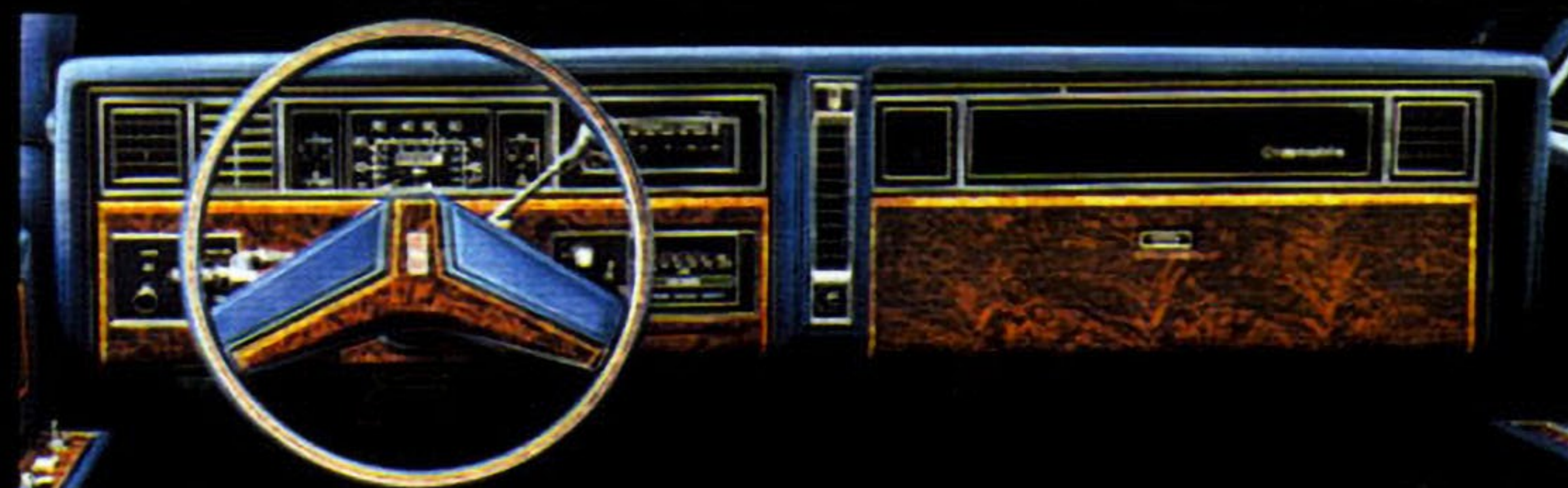
THERE IS A SPECIAL FEEL IN AN OLDSMOBILE



It's easy to get attached to a Toronado. Hard to part with one. The newly introduced Toronado Caliente will show you why. It comes with a padded landau roof. A stainless steel crown molding. And, a wide, gleaming side body molding. Inside, Caliente comes with interiors that feature supple custom leather in the seating areas (with soft lamb's wool shearling available).



Toronado facts, figures and features



The command post includes Tilt-Wheel and Cruise Control.



A "memory" seat is available. It's programmed to automatically preset the position most comfortable to the driver. That special feel of leather is available in seating areas.



15.2 cubic feet of lined and carpeted trunk space let you take it with you.



An electronic day-night mirror is available on Toronado.



Digital electronic instrument cluster option for Toronado models. (Not available on early 1984 models.)



(A) Standard wheel discs. (B) Available wire wheel discs with locks.



Delco/GM Bose music system is available. It's the finest auto sound system available today.

Toronado's front-wheel drive pulls you confidently through snow, rain, or sand.



Let's get it together... buckle up.

An inside look at Toronado...

TORONADO BROUGHAM STANDARD EQUIPMENT

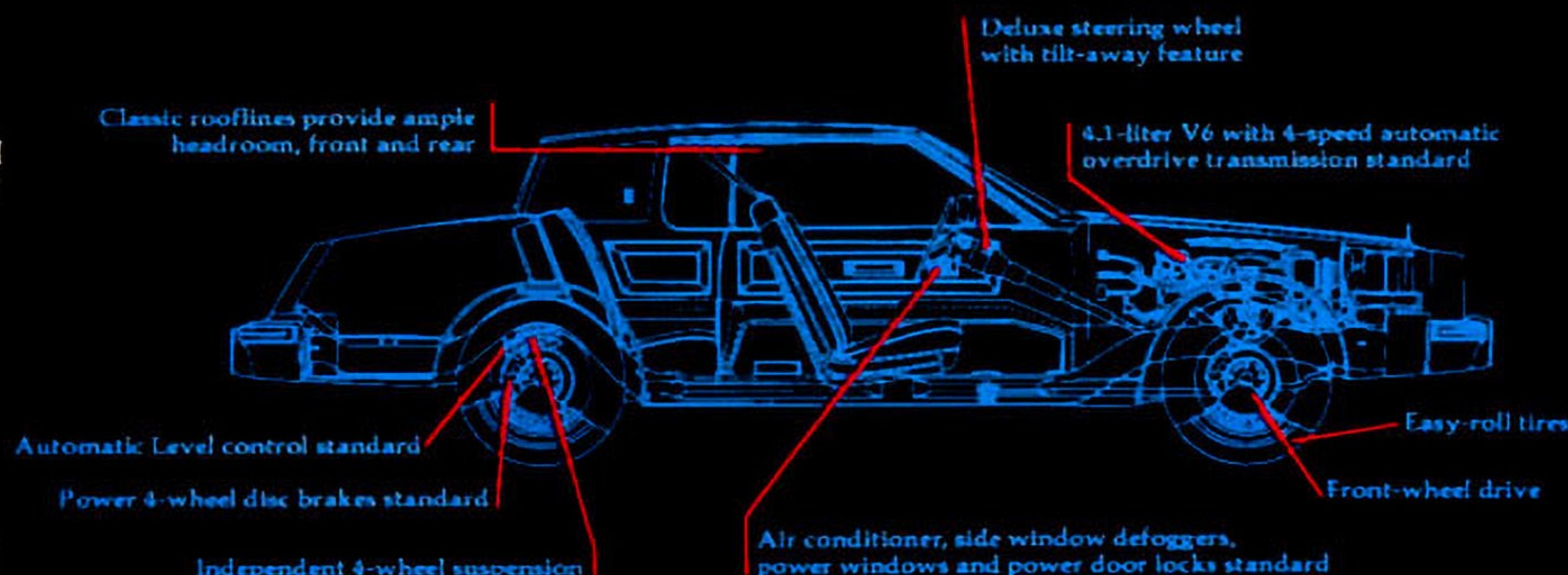
Chassis and Body:

■ Computer Command Control ■ High-Energy Ignition System ■ Power Four-Wheel Disc Brakes ■ Power Steering ■ Front Torsion Bar and Rear Coil Suspension ■ Torque-Beam Full Frame Construction ■ Side-Frame Jacking System ■ Compact Spare Tire and Wheel ■ Space-Efficient Trunk with Deluxe Trim and Spare Tire Cover ■ Bumper Impact Strips with Integral Bumper Guards, Front and Rear ■ Extensive Sound Deadeners ■ Anti-Corrosion Treatments ■ Automatic Level Control ■ Tungsten Halogen Headlamps (High-Beams) ■ Front Fender Cornering Lamps ■ Four-Wheel Independent Suspension ■ Bright Roof Drip, Rocker Panel and Wheel-Opening Moldings ■ Deluxe Bright Wheel Discs ■ Delcotron

Interior:

■ Four-Season Air Conditioner ■ Front and Rear Seat Center Armrests ■ Pulse Tone Headlamp-On Warning ■ ETR™ AM-FM Stereo Pushbutton Radio with Digital Quartz Clock, 2 Rear Speakers, plus Power Front Fender Antenna (May be deleted for credit) ■ Convenience Group Lamps, Visor Vanity Mirror ■ Cruise Control with Resume and Acceleration Feature ■ Side Window Defogger ■ Power Door Locks ■ Power Side Windows ■ Interior Operated Hood Lock Release ■ Instrument Panel Temperature Gage and Trip Odometer ■ Soft-Ray Tinted Glass ■ Simulated Butterfly Walnut Grained Instrument Panel Trim ■ Full-Foam Seat Construction ■ Divided Front Seats with Individual Controls ■ 6-Way Power Seat Adjuster, Driver Side ■ Deluxe Steering Wheel with Tilt-Away Features ■ Deluxe Seat Belts, Color-Keyed to Individual Interiors ■ Flo-Thru Ventilation ■ Fluidic Action Windshield Washers ■ Dual Front and Rear Ashtrays ■ Cigar Lighter ■ Door-Pull

*See EPA mileage estimates in accompanying Fuel Economy Estimate/Engine Supplement Sheet.



TORONADO BROUGHAM POWER TEAMS

Standard Engine:*

Liter/Type 4.1/V6

Carburetion 4-Barrel

Available Engines:*

Liter/Type 5.0/V8

Carburetion 4-Barrel

Liter/Type 5.7/V8 Diesel

Carburetion 4-Barrel

Standard Transmission:*

4-Speed Overdrive Automatic

DIMENSIONS:

Overall Length (in.) 206.0

Wheelbase (in.) 114.0

Luggage Capacity (cu. ft.) 15.2

Fuel Tank Capacity,

Gas (gals.) 21.1

Diesel (gals.) 22.8

Headroom, front (in.) 37.9

rear (in.) 37.9

Legroom,

front (in.) 42.8

rear (in.) 39.2

Shoulder Room,

front (in.) 56.6

rear (in.) 55.9

Handles ■ Wall-to-Wall Cut-Pile Carpeting with Carpeted Lower Door Panels ■ Courtesy/Warning Lamps on Doors ■ Instrument Panel, Glove Box, Dome Courtesy Lamps ■ Inside Day/Night Mirror
Additional Standard Equipment:
■ Engine, 4.1-liter V6, 4-Barrel ■ 4-Speed Overdrive Automatic Transmission with Torque Converter Clutch ■ P205/75R15 Steel-Belted Radial-Ply White-Stripe Tires ■ Outside Rearview Mirrors with Remote Control on Driver and Passenger Side

TORONADO AVAILABLE EQUIPMENT:

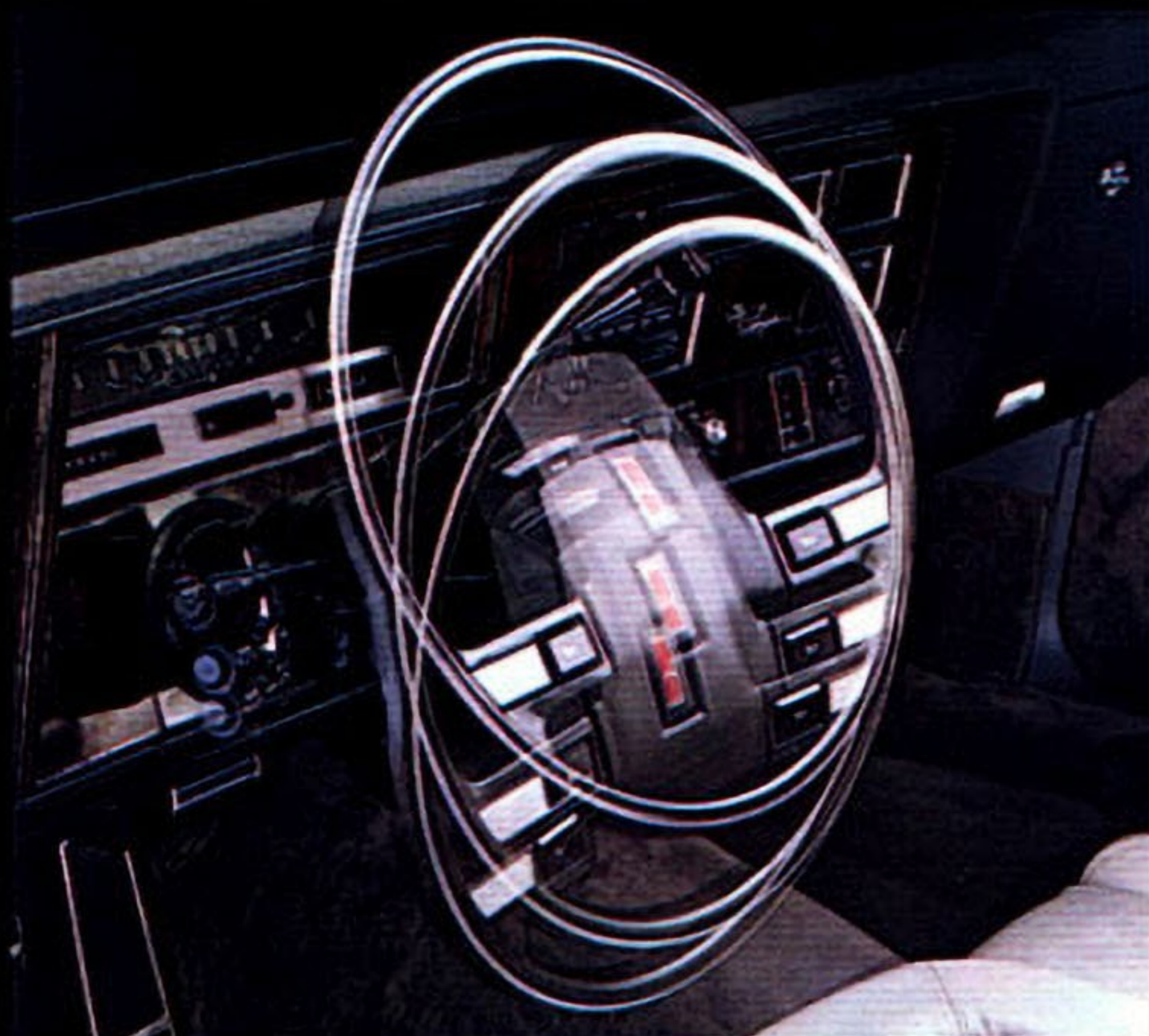
□ Automatic Inside Day/Night Mirror
□ Voice Information Reminder System
□ Custom Leather/Shearling Trim
□ Caliente Trim Package
□ 6-Way Power Seat Adjuster (Passenger Side)
□ 6-Way Power Seat Adjuster with 2-Position Memory Feature (Driver Side)
□ Reclining Seat Back, Manual (Passenger Side)
□ Reclining Seat Back, Manual (Driver Side)
□ Reclining Seat Back, Power (Passenger Side)
□ Automatic Power Door Locks
□ Power Trunk-Lid Lock Release

□ Auxiliary Floor Mats with Carpet Inserts—Front and Rear
□ Luggage Compartment Floor Mat
□ Body Side Moldings—Color-coordinated with Lower Body or Vinyl Rooftop Cover if ordered
□ Door-Edge Moldings
□ Pulse Wiper System
□ Electric Sliding Glass Astrorooftop (Headroom is reduced with this option)
□ Landau Padded Vinyl Rooftop Covering
□ Electric Rear Window Defogger
□ Tempmatic Air Conditioner
□ Exterior Sail Panel Opera Lamps
□ Dome and Dual Lens Reading Lamp Combination
□ Rear Seat Reading Lamps, Sail Panel Mounted
□ Front Door Locks and Interior Illumination Package
□ Electrically Operated Outside Rearview Mirrors

□ Illuminated Visor Vanity Mirror (Passenger Side)
□ Body Side Accent Stripes
□ Engine Block Heater
□ Diesel Engine Block and Fuel-Line Heater
□ Leather-Wrapped Steering Wheel
□ Tilt-and-Telescope Steering Wheel
□ Simulated Wire Wheel Discs with Locks
□ Puncture-Sealing White-Stripe Tires
□ Twilight Sentinel Light Control
□ High-Capacity Battery
□ Theft-Deterrent System
□ Exterior Lamp Monitors, Front and Rear
□ Special Firemist Paints in Autumn Red, Medium Sand Gray, Saddle Tan
□ Custom Leather Trim for Seating Areas, in Sand Gray, Maple Red, Saddle Tan
□ Reminder Package—Includes indicators for Low Fuel, Low Washer Fluid, High-Low Voltage, High Engine Temperature and Low Coolant
□ Body Side Paint Scheme
□ Firm Ride and Handling Package
—Includes Higher Rate Front Torsion Bars and Rear Springs, Firm Ride Front and Rear Shock Absorbers, Larger Front Stabilizer Bar, Rear Stabilizer Bar and Special Steering Gear (Tires QHK required)
□ High-Capacity Cooling Systems
□ Trailer Electrical Wiring Harness
□ Radios and Tape Players (See Page 31)
□ P225/70R15 Steel-Belted Radial-Ply White-Stripe Tires (Available and required with Firm Ride and Handling Package)

Let's get it together...buckle up.

Add to your Oldsmobile's special feel with these options and accessories.



Tilt-Wheel steering. Adjusts to six different driving positions. Pick the one you want.



Pulse Wiper System. Lets you get a variety of delay-interval wipes as you need them.



Electric Sliding Astrorooft. Conveniently retracts into roof to let in sun, fun and fresh air. It's such a bright outlook.



Illuminated visor/vanity mirror. Lights up when cover is opened. Most convenient.



Halogen headlamps. High-intensity high beam adds extra illumination to nighttime driving.



Reclining front seat backs. Available for driver and passenger side, provide comfort and support.

**Continuous
Protection
Plan**

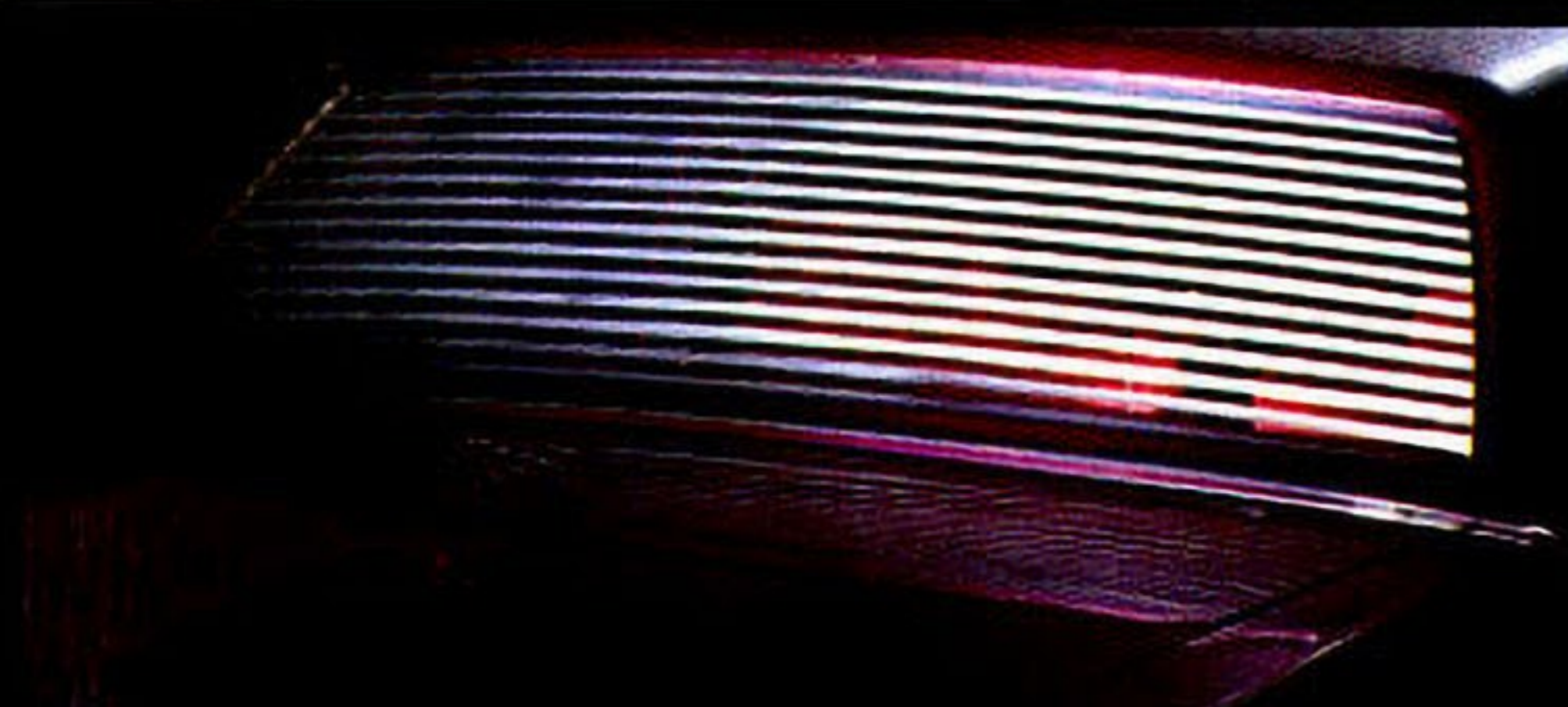


GM's Continuous Protection Plan offers service protection in addition to that provided by GM's New Vehicle Warranty. Ask your dealer about it. Coverage available only in U.S.A. and Canada.

A word about assembly, components and optional equipment in these Oldsmobile products: The Oldsmobiles described in this catalog are assembled at facilities of General Motors Corporation operated by Oldsmobile Division, General Motors Assembly Division and GM of Canada. These vehicles incorporate thousands of different components produced by various divisions of General Motors and by various suppliers to General Motors. From time to time during the manufacturing process, it may be necessary, in order to meet public demand for particular vehicles or equipment, or to meet federally mandated emissions, safety

and fuel economy requirements, or for other reasons, to produce Oldsmobile products with different components or differently sourced components than initially scheduled. All such components have been approved for use in Oldsmobile products and will provide the quality performance associated with the Oldsmobile name.

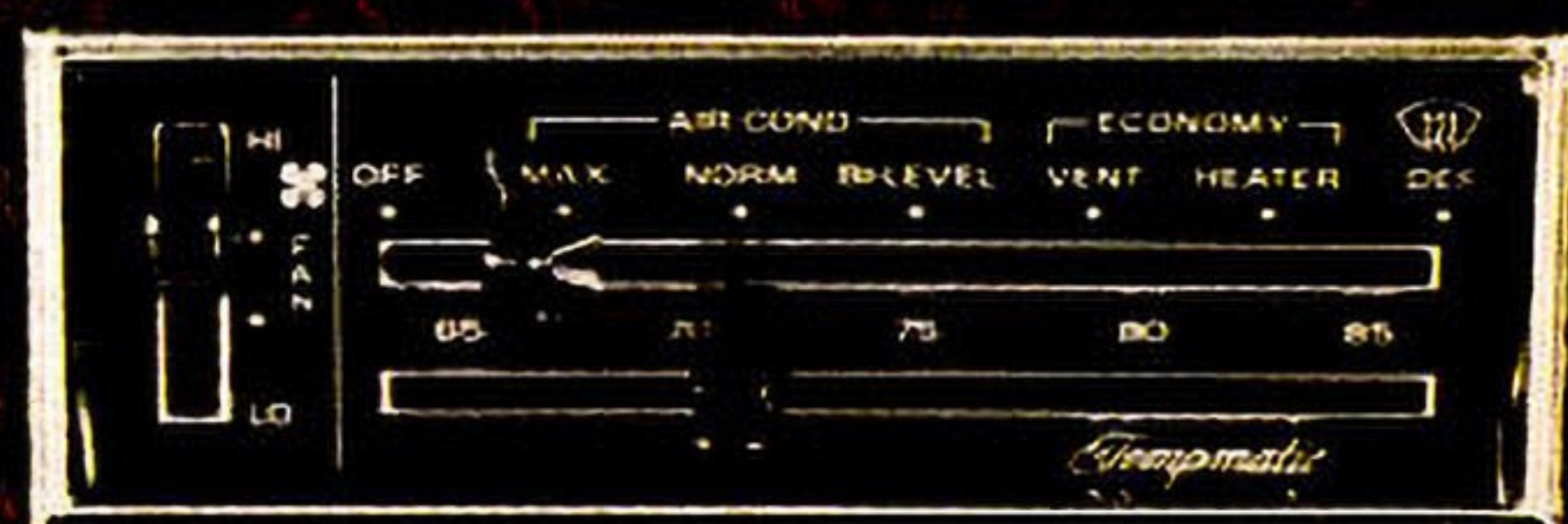
With respect to extra-cost optional equipment, make certain you specify the type of equipment you desire on your vehicle when ordering it from your dealer. Some options may be unavailable when your car is built.



Rear window defogger. Electric filaments in the glass defog the window quickly and silently. It's there when you need it.



Cruise Control with new "Accel" feature. Lets you accelerate to desired speed and hold it. Great on long trips.



Four-season air conditioner. Cools, heats, dehumidifies and filters for comfort.

Your dealer receives advice regarding current availability of options. You may ask the dealer for this information. GM also requests the dealer to advise you if the option you ordered is unavailable. We suggest that you verify that your car included the optional equipment you ordered or if there are changes, that they are acceptable to you.

Standard occupant-protection features: Manual lap/shoulder belts with pushbutton buckles for driver and right front passenger (driver seat includes visual and audible warning

	DELTA 88 ROYALE	CUSTOM CRUISER	NINETY-EIGHT REGENCY	TORONADO BROUGHAM
DELCO-GM MUSIC SYSTEMS				
CASSETTE SYSTEMS				
Delco/GM Bose Music System				A
ETR AM/FM Stereo/Seek-Scan & Auto Reverse Cassette w/Equalizer & Clock				A
ETR AM/FM Stereo/Seek-Scan & Auto Reverse Cassette w/Clock	A	A	A	
ETR AM/FM Stereo/Seek and Scan with Digital Display Clock - Includes Dual Rear Speakers with Extended Range (U66)			A	
ETR AM/FM Stereo & Cassette w/Clock				A
AM/FM Stereo & Cassette	A	A	A	
ETR AM/FM Stereo/Seek and Scan, Digital Display Clock, Cassette Tape Player and 40-Channel CB with Power Front Fender Tri-Band Antenna (U83) - Includes Dual Rear Speakers with Extended Range (U66)			A	
CB COMBINATIONS				
AM/FM Stereo & CB	A	A	A	
Universal Citizens Band (not available with U83)				A
STEREO SYSTEMS				
ETR AM/FM Stereo w/Clock				S
AM/FM Stereo	A	A	S	
MONO SYSTEMS				
AM	A	A		

A - Available S - Standard (May be deleted for credit)



Available AM-FM stereo with cassette and digital clock. Includes electronic-tuned receiver.



Available AM-FM stereo, cassette with equalizer and clock on Toronado. Excellent sound from the Auto Sound Specialist... Delco.

system) • Manual lap belt at center position, when applicable • Manual lap belts with push-button buckles at rear passenger positions including the center • Energy-absorbing steering column • Passenger-guard inside door lock handles • Inertia-type folding front seat back latches • Energy-absorbing instrument panel and front seat back tops • Laminated safety-glass windshield/tempered safety-glass side and rear windows • Safety armrests • Front seat head restraint for driver and right front passenger (adjustable or integral).

Standard accident-avoidance features: Side

marker lights and reflectors • Parking lamps that illuminate with headlamps • Four-way hazard warning flasher • Backup lights • Lane change feature in direction signal control • Windshield defrosters, washers and dual speed wipers • Vinyl-bonded inside mirror glass • Outside left rearview mirror • Dual master cylinder brake system with warning light • Starter safety switch • Dual action safety hood latch.

Standard built-in, anti-theft features: Audible anti-theft ignition key reminder • Anti-theft steering column lock • Inside hood release.

THE 1984 OLDSMOBILES:

TORONADO BROUGHAM COUPE
NINETY-EIGHT REGENCY
BROUGHAM SEDAN
NINETY-EIGHT REGENCY SEDAN
NINETY-EIGHT REGENCY COUPE
CUSTOM CRUISER
DELTA 88 ROYALE BROUGHAM SEDAN
DELTA 88 ROYALE BROUGHAM COUPE
DELTA 88 ROYALE SEDAN
DELTA 88 ROYALE COUPE

CUTLASS CALAIS COUPE
CUTLASS SUPREME BROUGHAM SEDAN
CUTLASS SUPREME BROUGHAM COUPE
CUTLASS SUPREME SEDAN
CUTLASS SUPREME COUPE
CUTLASS CRUISER
CUTLASS CIERA BROUGHAM SEDAN
CUTLASS CIERA BROUGHAM COUPE
CUTLASS CIERA LS SEDAN
CUTLASS CIERA LS COUPE

OMEGA BROUGHAM SEDAN
OMEGA BROUGHAM COUPE
OMEGA SEDAN
OMEGA COUPE
FIRENZA LX CRUISER
FIRENZA CRUISER
FIRENZA LX SEDAN
FIRENZA SX COUPE
FIRENZA SEDAN
FIRENZA S COUPE

There is a special feel
in an

Oldsmobile

