

OLDSMOBILE 1987  
GET THAT SPECIAL FEEL



FIRENZA • CALAIS • CUTLASS CIERA • CUTLASS SUPREME



W

herever you choose to travel, you'll find the value-packed front-wheel drive Firenza LC Coupe is one fun way to get there.

Reclining front bucket seats, power steering and new dual outside mirrors only hint at the many thoughtful touches you'll find. There's even a new turn-signal reminder that gently chimes when

your signal is left on.

An improved standard suspension system with MacPherson front struts gives you that road-hugging Oldsmobile ride. And this year, you can choose a new Level III Touring Car Ride and Handling Suspension that offers gas pressure struts and shocks.

You'll find that the real fun of Firenza Coupe is

the way it can move you. A spirited 2.0 Litre L4 fuel-injected engine works with a sure-shifting 4-speed manual transmission to quickly put a rough day far behind. And make you look forward to the open road ahead.

The quality and comfort of Oldsmobile... the fun of Firenza. That's "The Special Feel" of Firenza LC Coupe for 1987.

# FIRENZA

FIRENZA LC COUPE



## GET THAT SPECIAL FEEL

With Oldsmobile, there are many ways to "Get That Special Feel." And that special feel, only means one thing.

An appreciation for quality.

Quality you can see. And quality you can feel. No matter which Oldsmobile you choose to own, it's there for you to enjoy.

That's the proud tradition we've been building for over 90 years. And every Oldsmobile we've ever built has had our reputation for quality riding on it.

For sophisticated motorists, quality means being on the leading edge of automotive technology. A position that today requires the powers of computer-assisted design, computer-assisted manufacture, advanced robotics, electronics and more. To build the quality cars of today, Oldsmobile is using the technology of tomorrow.

And the results are easy to see in any one of our 1987 Oldsmobiles. With designs that are even more aerodynamic and comfort that is even more complete. Performance that is more responsive and convenience that offers the latest marvels of micro-technology.

To get that special feel, get behind the wheel of an Oldsmobile, today. You'll see what we mean.

And you'll feel it, too.





# FIRENZA

## FIRENZA GT (below)

Firenza GT, with its 2.8 Litre V6, new canted valves and higher compression ratio, packs more power than ever. All the GT trappings—specific two-tone paint schemes and new aluminum wheels, Rallye gauge cluster, reclining contour bucket seats, leather-wrapped steering wheel, quick-ratio power steering, plus a 5-speed manual shifter that's console mounted. Quick looking—quick moving.

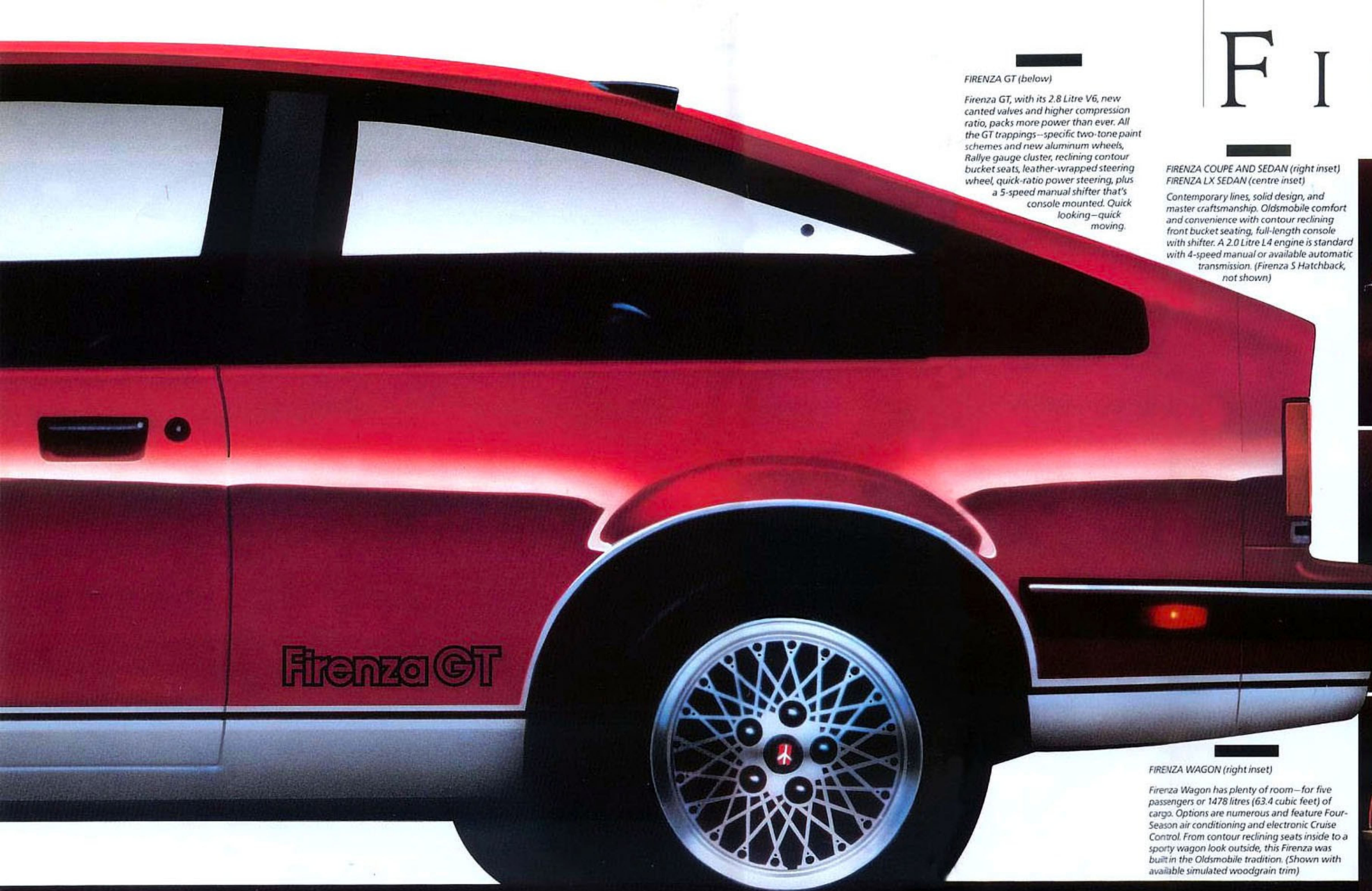
## FIRENZA COUPE AND SEDAN (right inset) FIRENZA LX SEDAN (centre inset)

Contemporary lines, solid design, and master craftsmanship. Oldsmobile comfort and convenience with contour reclining front bucket seating, full-length console with shifter. A 2.0 Litre L4 engine is standard with 4-speed manual or available automatic transmission. (Firenza S Hatchback, not shown)



## FIRENZA WAGON (right inset)

Firenza Wagon has plenty of room—for five passengers or 1478 litres (63.4 cubic feet) of cargo. Options are numerous and feature Four-Season air conditioning and electronic Cruise Control. From contour reclining seats inside to a sporty wagon look outside, this Firenza was built in the Oldsmobile tradition. (Shown with available simulated woodgrain trim)





With its new horizontally styled grille and composite halogen headlamps, this is one car that makes a great first impression. An impression of sophisticated technology and style. And in front-wheel drive Calais Supreme, you'll find that both are present in abundance.

Positive handling and a smooth Olds ride are the

results of an improved standard suspension that features MacPherson front struts.

And for 1987, General Motors engineers have also boosted the power of its standard 2.5 Litre fuel injected 4-cylinder engine, for more positive performance.

Inside, reclining bucket seats with lateral and lumbar supports are standard in rich Paris knit velour.

Elegant Sierra grain leather is available, and a long list of sophisticated options also features Four-Season air conditioning, and a removable tinted glass sunroof.

Best of all, because Calais Supreme is an Oldsmobile, your first impression...is built to last.

# CALAIS

CALAIS SUPREME SEDAN





To pamper your uncommon sensibilities, you'll appreciate the uncommon sense of Calais Supreme Coupe.

A sense of performance and style that is unmistakably Oldsmobile.

Here, front-wheel drive, power-assisted rack-and-pinion steering, MacPherson strut suspension and console-mounted 5-speed transmission make

all the sense in the world.

There's an available 3.0 Litre Multi-Port Fuel Injected V6, that is teamed up with an available automatic transmission and gives "sensible" a whole new meaning.

You'll find Calais Supreme Coupe has an uncommon sense of luxury. Plush door-to-door carpeting, soft Paris knit velour trim, and a Delco AM/FM ETR

stereo radio, are but a sampling of the ways in which Calais Supreme Coupe will pamper your sensibilities.

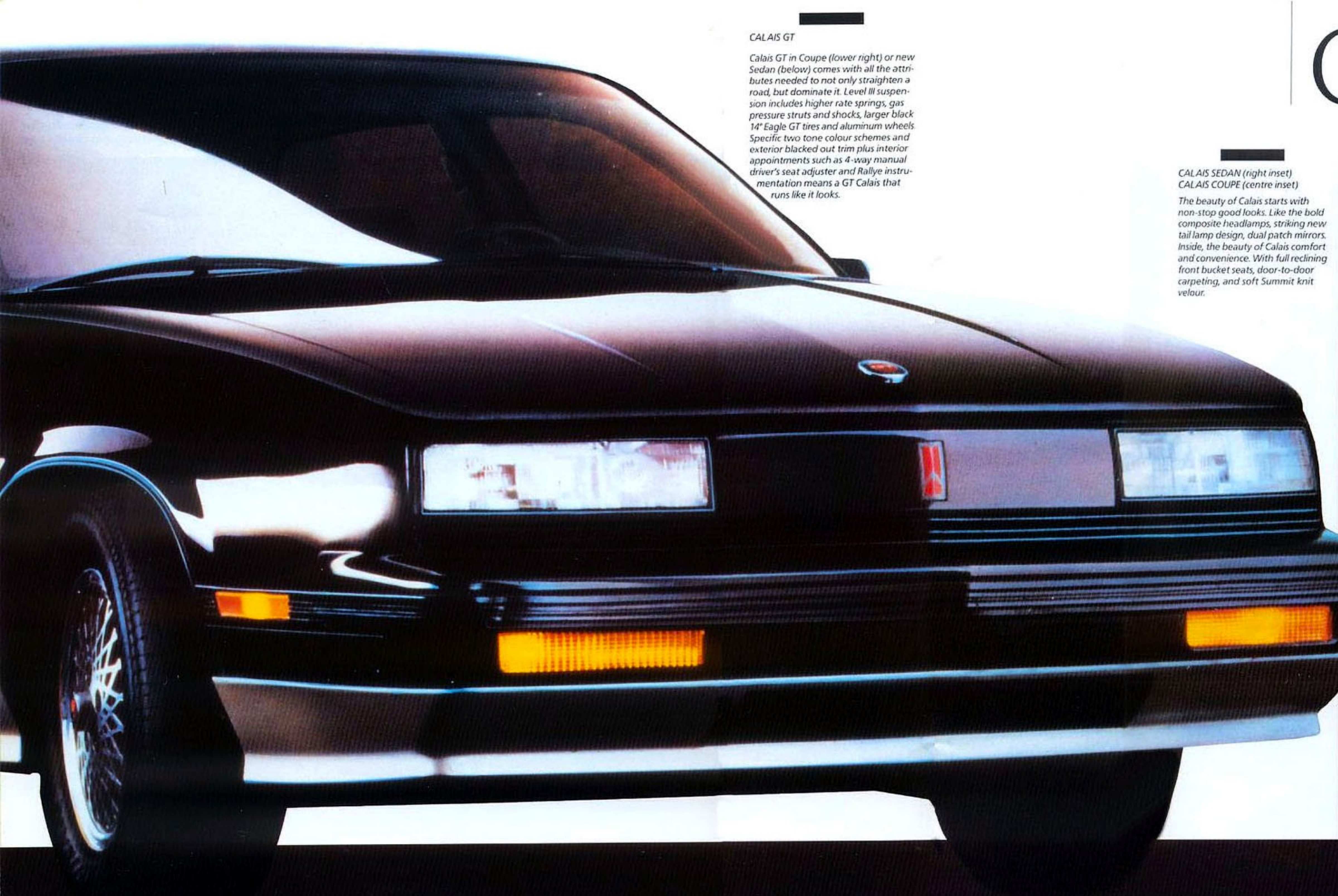
For the performance and style that's pure Oldsmobile, use your uncommon sense. You'll choose a Calais Supreme Coupe.

# CALAIS

CALAIS SUPREME COUPE







#### CALAIS GT

Calais GT in Coupe (lower right) or new Sedan (below) comes with all the attributes needed to not only straighten a road, but dominate it. Level III suspension includes higher rate springs, gas pressure struts and shocks, larger black 14" Eagle GT tires and aluminum wheels. Specific two tone colour schemes and exterior blacked out trim plus interior appointments such as 4-way manual driver's seat adjuster and Rallye instrumentation means a GT Calais that runs like it looks.

# CALAIS

#### CALAIS SEDAN (right inset) CALAIS COUPE (centre inset)

The beauty of Calais starts with non-stop good looks. Like the bold composite headlamps, striking new tail lamp design, dual patch mirrors. Inside, the beauty of Calais comfort and convenience. With full reclining front bucket seats, door-to-door carpeting, and soft Summit knit velour.





With front-wheel drive Cutlass Ciera, the key word is technology. A word that turns on the excitement of performance and style, in a mid-size car.

For 1987, the performance of its standard 2.5 Litre electronically fuel injected 4 cylinder engine has been re-engineered for greater horsepower while reducing vibration for smoother and more

enthusiastic performance.

And speaking of performance, here's more: MacPherson front strut suspension and power front disc brakes.

And an improved optional 2.8 Litre V6 with multi-port fuel injection.

Beneath the sleek SL coupe's roofline, you'll find styling that's really distinctive with new composite

halogen headlamps and new tail lamps. A sporty new grille, and wraparound side marker lights.

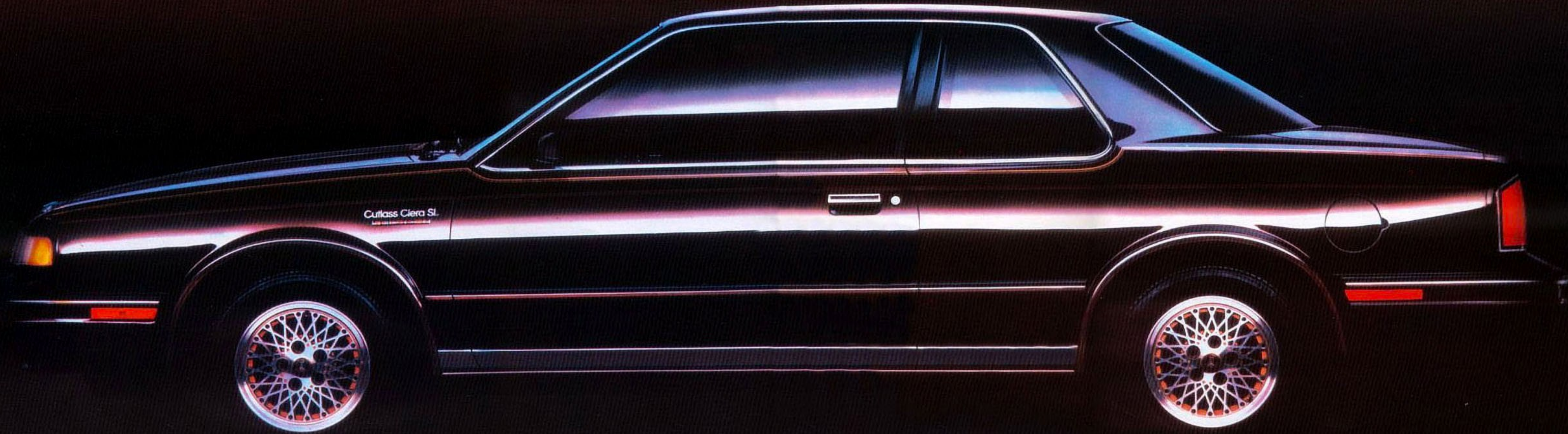
Oldsmobile technology is also well represented in Ciera SL's many comfort and convenience appointments.

So grab the key and turn on the excitement.

The technology of performance is waiting.

# CIERA

CUTLASS CIERA SL COUPE





H

igh standards of quality, in perfect harmony with contemporary elegance. That's what today's sophisticated drivers demand. And that's Cutlass Ciera Brougham for 1987.

Standard luxury and convenience appointments give you the full Olds luxury treatment: 55/45 divided front seating with individual controls, front

centre armrest, deluxe steering wheel, rich Paris knit velour trim, deep wall-to-wall carpeting.

For that Olds quality ride, you can choose from three levels of ride control. The smooth, standard boulevard ride of Level I, the firm ride and handling of Level II, or the touring ride and handling suspension of Level III.

The standard 2.5 Litre electronically fuel injected

4 cylinder engine has been re-engineered for greater horsepower, or choose the optional 2.8 Litre Multi-Port Fuel Injected V6, for even more.

For 1987, a sportier front end features composite halogen headlamps and a new grille design. And of course an extensive array of options lets you create an appearance and driving environment that's in perfect harmony with your sense of style.

# C I E R A

CUTLASS CIERA BROUGHAM SEDAN





# C I E R A . . . . .

## CUTLASS CIERA GT

In sporty Sedan (lower right inset) or stylish Coupe (below), Ciera GT gives you the full grand-touring treatment. Reclining front bucket seats in attractive cloth (leather trim is available), composite halogen headlamps, black grille, fog lamps, front air dam, dual outlet exhaust, high-capacity cooling system, and 3.8 Litre sequential-fuel injection V6 are all standard. Oversize stabilizer bars, styled aluminum wheels, higher rate springs and wide Eagle GT tires, put the power onto the pavement.

## CUTLASS CIERA SEDAN (right inset) CUTLASS CIERA S COUPE (centre inset)

People who value their driving, appreciate the value of Cutlass Ciera. Rich new Bronte velour interiors offer tasteful comfort for six. A custom bench with centre armrest is standard, or choose reclining buckets from a long list of options that includes Four-Season air conditioning and a full selection of power equipment. Power rack-and-pinion steering, power front disc brakes, and a 2.5 Litre electronically fuel injected 4 cylinder engine are standard.





Outstanding cargo capacity, and comfort for a family on the go... Cutlass Cruiser Brougham carries it off in style. Just fold down the rear seat and a 2107 litre (74.4 cubic feet) cargo area is at your disposal. There's ample room for six or even more, with an optional rear-facing third seat. And because it's an Oldsmobile, it's more than just a wagon with room.

It's a wagon with a 55/45 divided front bench and individual controls. Cut-pile carpeting that's wall-to-wall and full length in the cargo area. Attractive Paris velour trim. And deluxe safety belts for everyone on board. Power steering, power brakes and MacPherson front strut suspension will make any journey a joyful one. And another joy is choosing from an

impressive lineup of available equipment. Special electronic instrumentation, Four-Season air conditioning, simulated woodgrain trim and a powerful 2.8 Litre Multi-Port Fuel Injected V6 engine are just a few. When it comes to comfort and room, Cutlass Cruiser Brougham can really get carried away. (Cutlass Cruiser wagon, not shown)

# CUTLASS

CUTLASS CRUISER BROUGHAM





W

hen it comes to combining luxury with spirited performance, Cutlass Supreme Brougham isn't just headed in the right direction. For 1987, it leads the way.

With new standard features designed to enhance its already aerodynamically correct styling. Like composite halogen headlamps, a new grille design and side marker lamps. To dress it up, choose the

available padded vinyl Landau roof, or the added sun and fun of removable tinted glass roof panels. A 3.8 Litre 2-barrel V6 coupled with rear-wheel drive and Oldsmobile's standard Level I suspension, takes care of your performance requirements.

And to satisfy the most demanding, a powerful 5.0 Litre 4-barrel V8, 4-speed automatic transmission with overdrive and Level II Firm Ride and

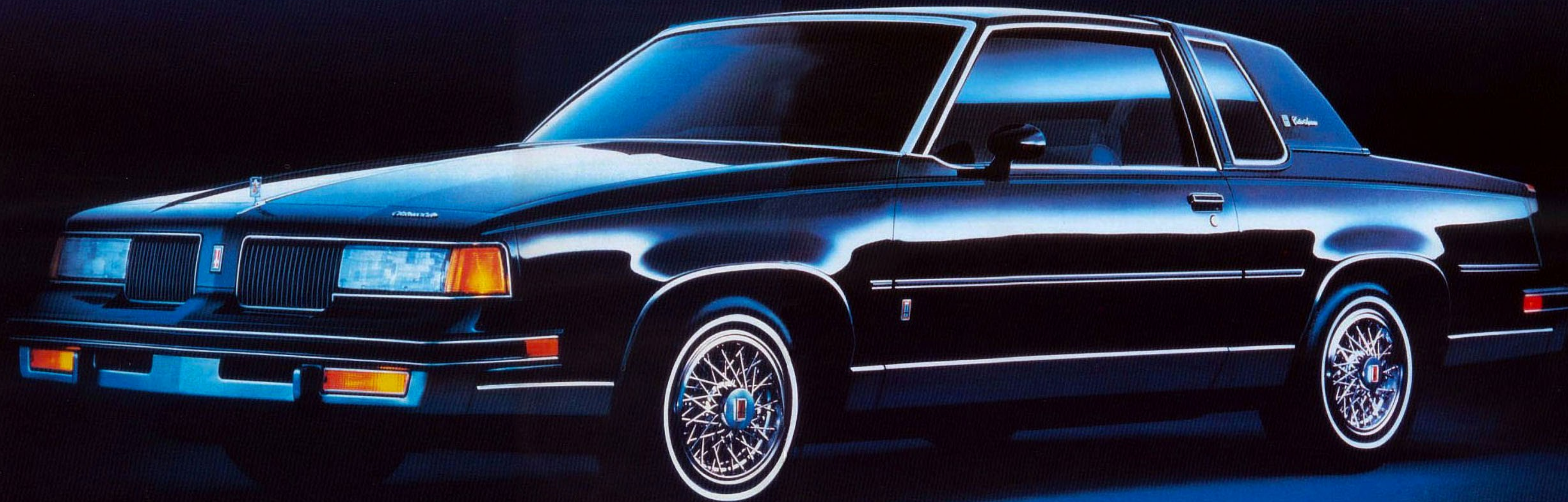
Handling suspension are all available.

Its luxurious character is perhaps best displayed in an interior that features the comfort of 55/45 divided front seating in stunning Summit knit velour.

No matter where you're headed, you'll be leading the way...in style.

# CUTLASS

CUTLASS SUPREME BROUGHAM COUPE





**T**he pleasure of driving Cutlass Supreme Brougham is that it pleases you in so many ways. Inside, it accommodates six in quiet comfort. Comfort enhanced by deep full-foam seating, and the luxury of exquisitely tailored Summit knit velour. The 55/45 front bench seat also features individ-

ual controls to position you perfectly. You'll find the performance is more than pleasing. A responsive 3.8 Litre 2-barrel V6 and smooth-shifting automatic transmission are standard pleasures. Cutlass Supreme Brougham's vast array of available equipment will please you to perfection. Four-Season air conditioning, full padded vinyl

roof, power windows and door locks, and six-way power driver's seat are but a few of the choices you can make. In town or on the highway, you may never have enjoyed driving this much before.

# CUTLASS

CUTLASS SUPREME BROUGHAM SEDAN





# CUTLASS.....



CUTLASS SUPREME SEDAN (top inset)  
CUTLASS SUPREME COUPE (lower inset)

Look inside, and you'll see Cutlass Supreme's attention to detail at a glance. Thick Bronte velour trim. Deep cut-pile carpeting. Available power equipment including windows, locks, air conditioning and Cruise Control. The standard 3.8 Litre 2-barrel V6 coupled with power steering, power front disc brakes and an automatic transmission, delivers the sure-fire performance that's Cutlass all the way.

## CUTLASS SALON

For outright performance and style, Cutlass Salon (below) can go head-to-head with the best of them. Its contoured reclining bucket seats highlight a driving environment that includes rich Bronte velour, leather-wrapped sport steering wheel, special Rallye instrumentation, and floor-mounted console with stick shift. To really move you, a 5.0 Litre 4-barrel V8 is one option you'll opt for.





# INTERIORS

FIRENZA



FIRENZA LX



FIRENZA CRUISER



FIRENZA GT



LEFT: Firenza LC coupe and LX sedan contour reclining front bucket seats are trimmed in plush Baron weave velour.  
CENTRE: The roomy Firenza Cruiser interior features Cascade weave velour trim.  
RIGHT: Firenza GT seating in Strata weave velour. Full-folding rear seats with split-folding seat backs are standard.

CALAIS



CALAIS SUPREME



CALAIS



CALAIS GT



LEFT: Calais Supreme Sedan and Coupe offer standard reclining bucket seats in rich Paris knit velour. Sierra grain leather is available.  
CENTRE: Summit knit velour is standard luxury in Calais Sedan and Calais Coupe.  
RIGHT: Standard Calais GT seating is Strata weave velour. Morocco grain leather (shown) in seating areas is also available.

CUTLASS CIERA



CIERA BROUGHAM



CIERA



CIERA GT



LEFT: Cutlass Ciera Brougham Sedan or Cruiser and SL Coupe's 55/45 divided front seating shown in standard Paris knit velour. Or choose supple Sierra grain leather.  
CENTRE: Cutlass Ciera and Cruiser custom bench with centre armrest in standard Bronte velour. 55/45 divided front bench is available. Bucket seats are also available.  
RIGHT: Exclusive Ciera GT bucket seats. Shown in available perforated leather. (Strata weave velour trim, standard)

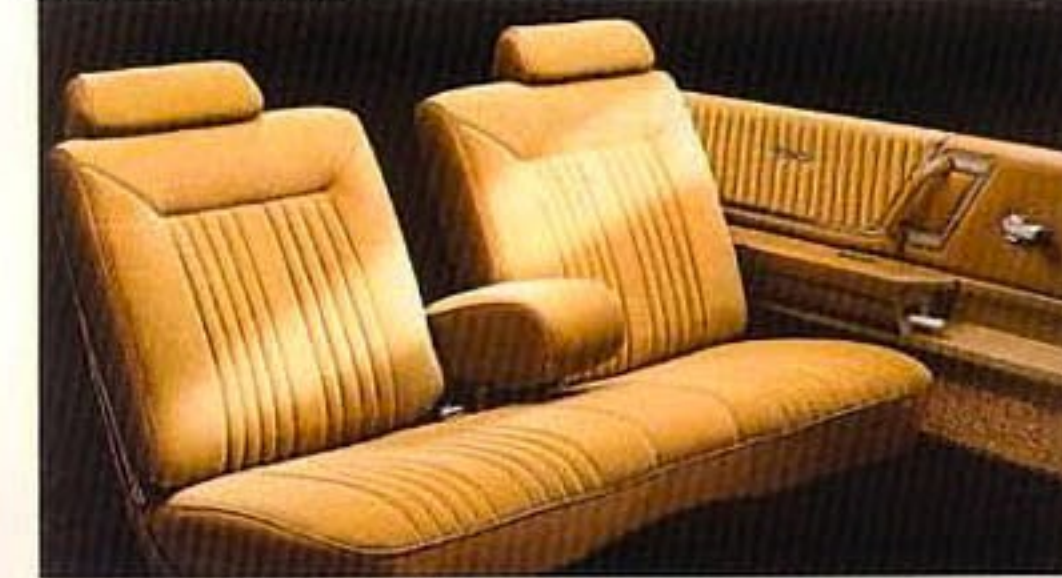
CUTLASS SUPREME



CUTLASS SUPREME BROUGHAM



CUTLASS SUPREME



CUTLASS SALON



LEFT: Gracious Summit knit velour highlights Cutlass Supreme Brougham 55/45 divided front seating.  
CENTRE: Cutlass Supreme custom bench seating offered in luxurious Bronte velour.  
RIGHT: Cutlass Supreme Coupe offers available contour bucket seats in Bronte velour.



WHEELS



Top row left to right.

Aluminum-Styled Wheels. Available on all Firenza, Calais and Calais Supreme models, except GT.

Super Stock Chrome Wheel. Optional for all Cutlass Supreme, Cutlass Supreme Brougham and Cutlass Salon models.

Super Stock Wheel, colour-coordinated with Stainless Steel Trim Ring. Optional for all Cutlass Ciera, Cutlass Cruiser, Cutlass Supreme and Cutlass Supreme Brougham models. Standard on Cutlass Salon. Not available on Cutlass Ciera GT's.

Deluxe Wheel Disc. Standard on Calais and Calais Supreme. Not available on Calais GT.

Middle row left to right.

Rally Wheel with Trim Ring. Standard on all Firenza models except GT.

Aluminum-Styled Wheel. Optional for Cutlass Supreme, Cutlass Supreme Brougham and Cutlass Salon models.

Simulated Wire Wheel Disc with lock: Optional on all Firenza and Calais models, except GT's.

Aluminum-Styled Wheels. Standard on Firenza GT Hatchback, Calais GT, Cutlass Ciera GT's. Optional on all Firenza (except Cruiser), Calais, Calais Supreme and Cutlass Ciera models including Cutlass Cruiser. Also available in Silver with selected primary colours for Firenza and Calais; Gold for Cutlass Ciera.

Deluxe Wheel Disc. Standard on Calais, Calais Supreme.

Bottom row left to right.

Simulated Wire Wheel Disc with lock. Optional for all Cutlass Supreme, Cutlass Supreme Brougham and Cutlass Salon models. Optional for all Cutlass Ciera models including Cutlass Cruiser. Not available on Cutlass Ciera GT's.

Deluxe Wheel Disc. Standard on all Cutlass Supreme and Cutlass Supreme Brougham models.

Simulated Wire Wheel Disc with lock. Optional on all Cutlass Ciera models except GT's.

Deluxe Wheel Disc. Standard for all Cutlass Ciera models including Cutlass Cruiser. Not available on GT's.

SOUND SYSTEMS



DELCO SOUND SPECIALIST RADIOS

	Ciera GT, Ciera Brougham, Ciera SL, Ciera, Ciera S, Cutlass Cruiser, Cruiser Brougham,	Cutlass Supreme, Supreme Brougham, Salon	Firenza GT, Firenza LX, Firenza LC, Firenza, Firenza S,	Calais Supreme, Calais
Radio, Delco AM—includes dual front speakers	—	S	—	—
Radio, Delco ETR AM/FM stereo with seek-scan, digital display and clock —includes dual rear speakers	S	A	S	S
Radio, Delco ETR AM/FM stereo with seek-scan, auto-reverse cassette and digital display and clock—includes dual rear speakers with extended range	A	A	A	A
Radio, Delco ETR AM stereo*/FM stereo with seek-scan, auto-reverse cassette with Music-search, graphic equalizer, digital display and clock—includes dual rear speakers with extended range. *C-Quam type AM stereo. C-Quam is a registered trademark of Motorola, Inc.	A	A	—	A
Radio, Delco/Bose Music System, ETR AM/FM stereo with seek & scan, auto-reverse cassette with music search and digital display clock—includes Delco/Bose speakers system	—	—	—	A

S—Standard equipment. A—Available equipment.

COLOURS

FIRENZA

White  
Silver Metallic  
Medium Gray Metallic  
Black  
Bright Blue Metallic  
Light Sapphire Blue Metallic  
Dark Sapphire Blue Metallic  
Yellow Beige  
Light Chestnut Metallic  
Carmine Red  
Medium Rosewood Metallic  
Dark Rosewood Metallic

CALAIS/CALAIS SUPREME

Platinum Metallic  
Black Metallic  
Light Sapphire Blue Metallic  
Medium Sapphire Blue Metallic  
White  
Copper Beige  
Dark Copper Metallic  
Medium Copper Metallic  
Medium Garnet Red Metallic  
Light Rosewood Metallic  
Medium Rosewood Metallic  
Medium Gray Metallic  
Ask your dealer for details on Calais GT.  
Specific two-tone availabilities.

CUTLASS CIERA/CIERA BROUGHAM/CUTLASS CRUISER/CUTLASS CRUISER BROUGHAM MODELS

White  
Silver Metallic  
Medium Gray Metallic  
Black  
Light Teal Blue Metallic  
Dark Teal Blue Metallic  
Light Sage Green Metallic  
Yellow Beige  
Light Chestnut Metallic  
Dark Chestnut Metallic  
Medium Red Metallic  
Burgundy Metallic

CUTLASS SUPREME/CUTLASS SUPREME BROUGHAM/CUTLASS SALON MODELS

White  
Silver Metallic  
Medium Gray Metallic  
Black  
Light Teal Blue Metallic  
Dark Teal Blue Metallic  
Light Sage Green Metallic  
Yellow Beige  
Light Chestnut Metallic  
Dark Chestnut Metallic  
Medium Red Metallic  
Burgundy Metallic  
Note: Metallic paints are available at extra-cost on Firenza, Calais and Cutlass Ciera models.

