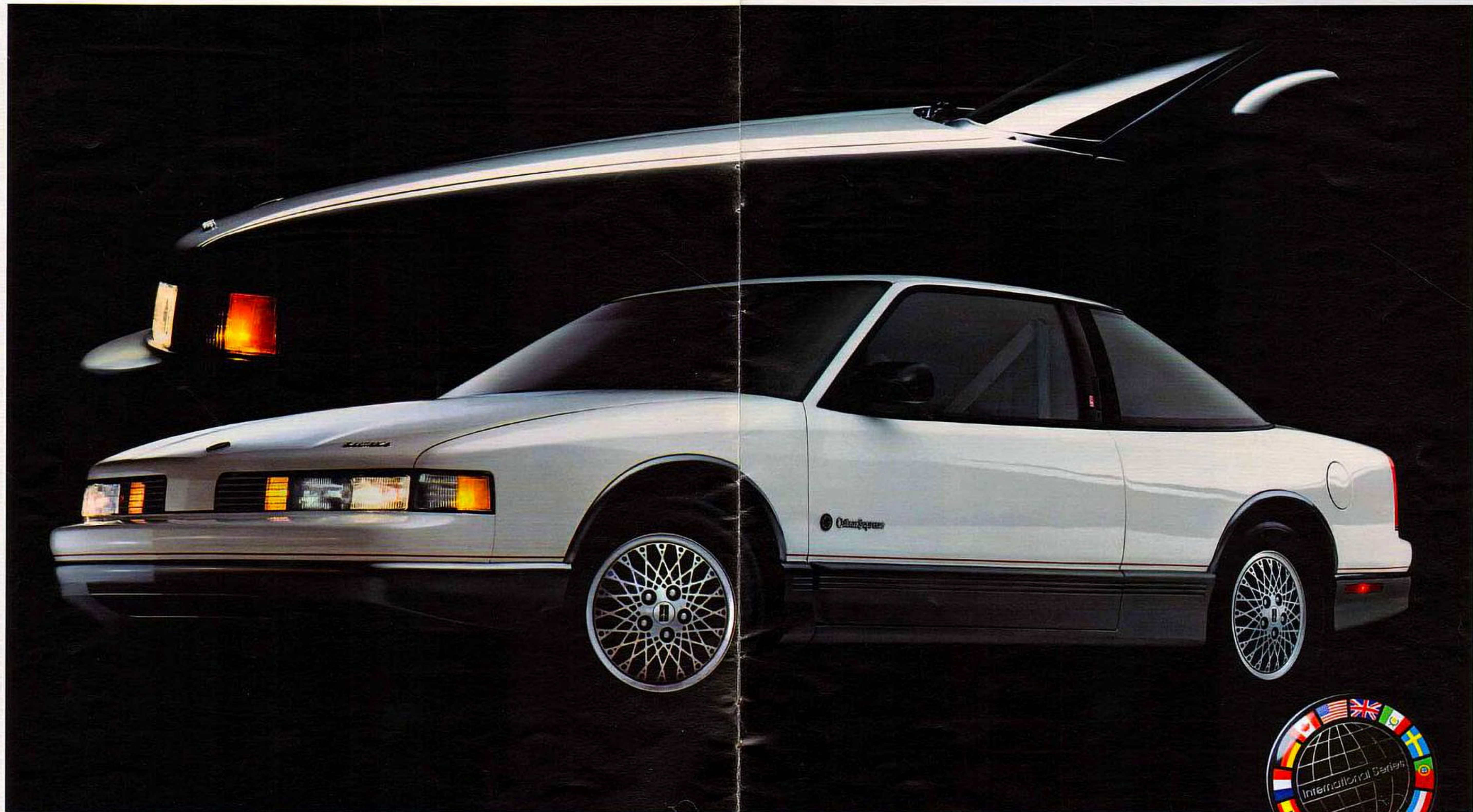



VOL. III

1988 OLDSMOBILE CUTLASS SUPREME



FROM THE ENGINEERS AT OLDSMOBILE



A GREAT NEW DRIVING EXPERIENCE—IN ANY LANGUAGE.
CUTLASS SUPREME INTERNATIONAL SERIES.



**TO A GREAT-HANDLING
CUTLASS SUPREME,
WE'VE INFUSED GRAND
TOURING SOPHISTICATION.**

And it shows. Everywhere. You see it in the Cutlass Supreme International Series' dramatic exterior—with black grille and trim, and functional aero rocker moldings. Inside, seats that you sit in, not on, as it should be in a serious driver's car. The

ergonomically sculptured, reclining bucket seats literally hug you—with power-operated headrest, thigh and side bolsters. The adjustable lumbar support is power-operated. Four-way manual seat articulation is also standard. As are the center console and 5-speed manual shifter. A 4-speed automatic overdrive transmission is available. The rear passenger compartment, too, offers bucket seat support, with deluxe folding center

console that features convenient storage space and beverage cup holder. Instrumentation is complete with tachometer—and precise with electronic analog displays.

All grand, but the grand touring experience really begins when you fire up the 2.8-liter multiport fuel-injected V6 and sample the special FE3 underpinnings. It's an impressive four-wheel independent suspension with touring car

ride and handling capabilities that make the driving experience memorable. Head Cutlass Supreme International Series down some serpentine country road and feel just how grand, grand touring can be.

With leather-wrapped steering wheel and quick-ratio power rack-and-pinion steering, you treat curves and corners like so much straightaway. Lean and sway are virtually imperceptible.



If you love driving, the new Cutlass Supreme International Series speaks your language. Take a test drive now.

Ergonomically contoured front and rear bucket seats are featured.



STYLING AND AERODYNAMICS IN THEIR MOST ADVANCED FORM.
CUTLASS SUPREME SL.



Cutlass Supreme SL interior

**WE SPENT OVER FIVE YEARS
ENGINEERING DEPENDABILITY
AND QUALITY INTO THE
NEW CUTLASS SUPREME.
IT'S BUILT TO LAST.**

It is almost a paradox that a car so sleek and elegantly styled is also tough as nails. But that's Cutlass Supreme. So sleek, it could give aerodynamics lessons to a teardrop. Yet with its extensive, stiff,

upper glass structure and crowned body panels below, it proves itself to be one of the strongest and most rigid Oldsmobiles ever engineered.

The exterior body is also constructed of two-sided galvanized steel for impressive anti-corrosion protection. The exhaust system is stainless steel. Very tough, lightweight and long lasting.

But slip inside a new Oldsmobile Cutlass Supreme and enjoy comforting

elegance in its own unique, stylish form.

Seats are full-foam, comfortable and supportive. In the SL model (above left), the front seat is a 55/45 divided bench with dual controls and reclining seat backs for outstanding individual support. The fabric is soft, durable Prima II velour. And the rear seat features a relaxing fold-down center armrest.

The Cutlass Supreme provides a custom bench front seat or available 55/45



Cutlass Supreme interior

divided bench (above right), tailored in tasteful, long-wearing Bronte velour.

You may choose either interior in Dark Sapphire Blue, Medium Beechwood, Dark Garnet Red or Medium Gray. If you prefer, bucket seats are available.

For an added touch of luxury, Cutlass Supreme SL may be ordered with genuine leather in the seating areas.

The instrument panel is electronic for quick, precise communication, and

modular for quick and easy servicing. All controls are lighted and very user friendly. You could literally turn the headlamps on while wearing boxing gloves.

As for six-passenger room? It's impressive in both models, with about an inch more shoulder room than before.

So stretch out and enjoy that great new ride, with 2.8-liter multiport fuel-injected V6, 4-speed automatic over-drive transmission, power rack-and-pinion

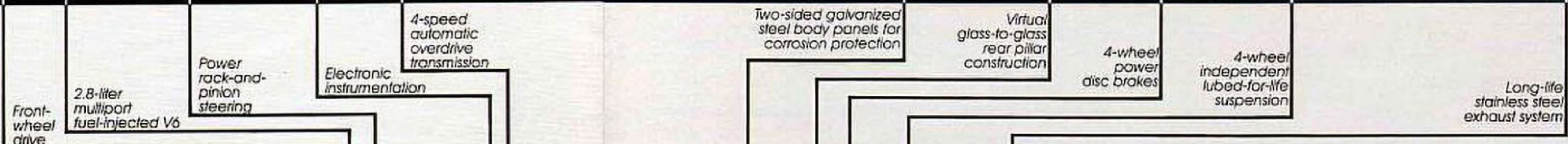
steering, 4-wheel disc brakes and one great suspension.

Well, actually, four—with an independent suspension system at each wheel. With Cutlass Supreme's rigid platform, the agile handling is more like a cat, less like a car. The ride, of course, is Oldsmobile smooth and quiet.

And now—it's time. Try it for yourself. See your Oldsmobile dealer and test drive the all-new Olds Cutlass Supreme.



Olds Cutlass Supreme Coupe. With outstanding aerodynamics, rigid body construction, and four-wheel independent suspension, it is Oldsmobile Cutlass in its most advanced form. And it is the most affordable of the new Cutlass Supremes.



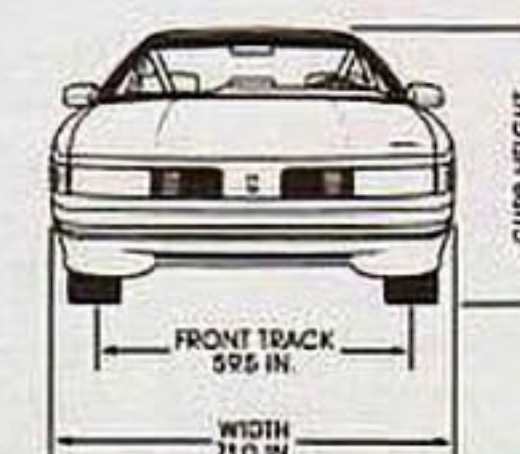
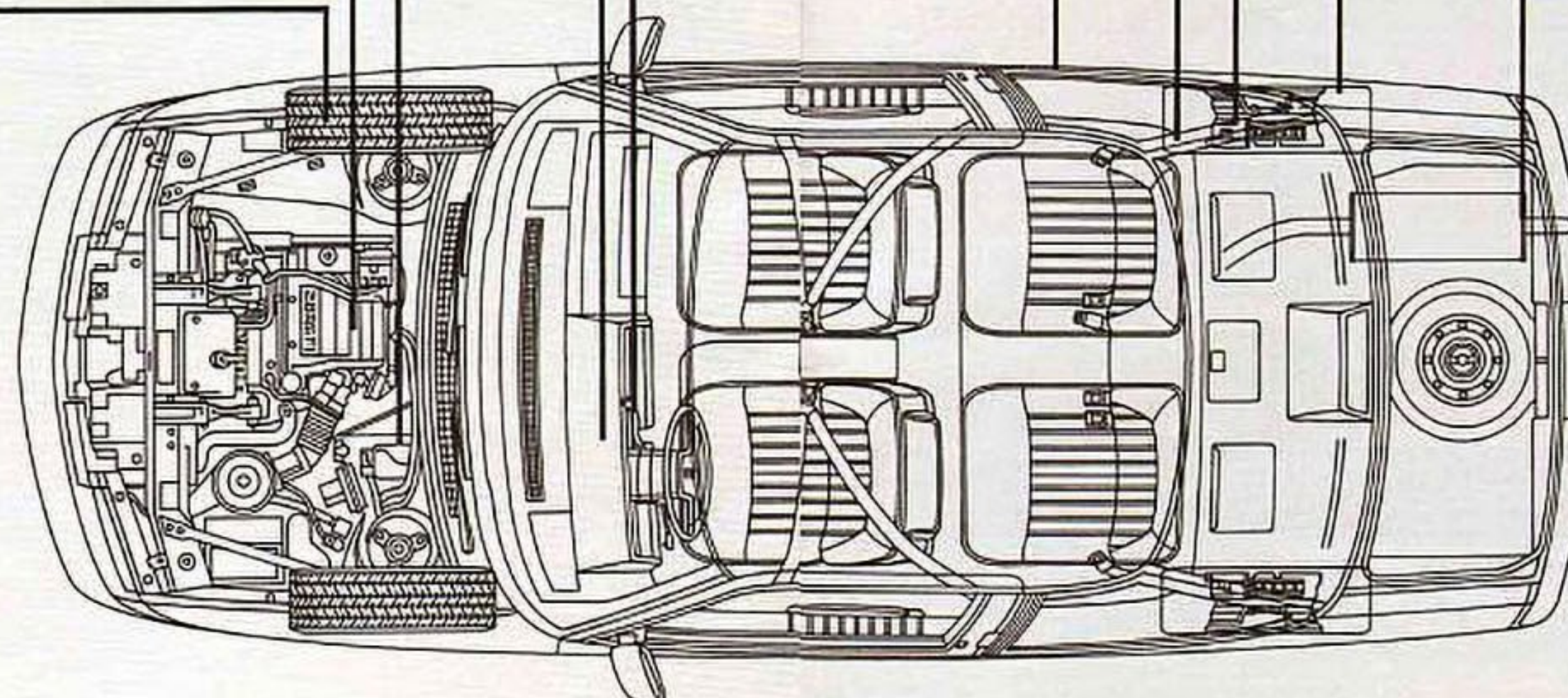
HIGH-TECH ADVANCEMENTS AND SERIOUS ENGINEERING ADD MEASURABLY TO QUALITY, DURABILITY AND DRIVING SATISFACTION.

CUTLASS SUPREME POWERTRAIN SPECIFICATIONS

ENGINE	STANDARD
Displacement	2.8-liter (173 cu.in.)
Type	V6
Brake HP (rpm)	130 @ 4500
Net torque (lbs. ft.)	170 @ 3600
Bore/Stroke (in.)	3.504/2.988
Compression ratio	8.5 to 1
Fuel management	Electronic Fuel Injection (Multiport)
Cooling system (qt.)	11.3
DRIVELINE	
Transaxle	4-speed automatic overdrive*
Final drive ratio	3.33 to 1
SUSPENSION/HANDLING	
Front	MacPherson struts
Rear	Independent
Trailer towing capacity (lbs.)†	3500

*5-speed manual standard on International Series (3.6l to 1 final drive ratio).

†Recommended maximum capacity when properly equipped. Includes passengers, cargo and equipment.



CUTLASS SUPREME DIMENSIONS

BODY/CHASSIS	COUPE
Wheelbase (in.)	107.5
Track, front/rear (in.)	59.5/58.0
Tire size (std.)	P195/75R14
Wheel size	14 x 5.5
Brake type, front/rear	Disc/Disc
Fuel tank (gals.)	16.3
EXTERIOR	
Length (in.)	192.1
Width (in.)	71.0
Height, curb (in.)	52.8
Curb weight (lbs.)	3128
INTERIOR	
Headroom, front/rear (in.)	37.8/37.0
Legroom, front/rear (in.)	42.3/34.8
Shoulder room, front/rear (in.)	57.6/57.2
Seating capacity	6**
Trunk capacity (cu. ft.)	15.5

**4-passenger capacity in International Series.

STANDARD AND AVAILABLE EQUIPMENT

POWERTRAIN

K05 Heater, Engine Block	A	A	A
LB6 Engine, 2.8-liter V6 with Multiport Fuel Injection	S	S	S
MM5 Transmission, 5-Speed Manual with Floor Shifter	A*	A*	S
MX0 Transmission, Automatic with Overdrive	S	S	A

CHASSIS

Battery, Freedom with Delco-tron	S	S	S
Brakes, 4-Wheel Power Disc	S	S	S
Exhaust System, Sport Tuned			S
Exhaust System, Stainless Steel	S	S	S
Ignition System, High-Energy	S	S	S
Steering, Power-Assisted Rack-and-Pinion	S	S	S
Steering Gear, Quick Ratio			S
Suspension, 4-Wheel Independent, Lubed-for-Life	S	S	S
Tires, P195/75R14 Steel-Belted Radial-Ply, Blackwall—All-Season	S	S	
Tires, P215/65R15 ^a Steel-Belted Radial-Ply, Blackwall Eagle GT+4	A*	A*	S
Wheel Discs, Custom	S	S	
Wheels, 14" x 5.5"	S	S	
Wheels, 15" x 6" Aluminum Styled	A*	A*	S
FE2 Level II Load-Carrying Suspension System—includes Firm Ride Front and Rear Spring and Shock Absorbers; Larger Front Stabilizer Bar and Tires, P205/70R14 Steel-Belted Radial-Ply, Special Ride Blackwall—All-Season	A*	A*	
FE3 Level III Touring Car Ride and Handling Suspension System—consists of special suspension components—includes Steering Wheel, Leather-Wrapped; Wheels, Aluminum Styled 15" and Tires, P215/65R15 ^a Steel-Belted Radial-Ply, Performance Blackwall	A*	A*	S
K06 Fan, Engine Cooling Enhances Air Conditioner Performance—recommended for Low-Speed Driving in High-Temperature Areas—included in V08	A	A	A
N91 Wheel Discs, Simulated Wire with Lock 14"	A	A	
PC7 Wheels, Styled Color-Coordinated 14"	A	A	
PH5 Wheels, Aluminum Styled 14"	A	A	
QMX Tires, P195/75R14 Steel-Belted Radial-Ply, White-Stripe—All-Season	A	A	
V08 Cooling Equipment, High Capacity—recommended for Medium-Weight Trailer (2,000-3,500 lbs.) Towing Applications in High-Temperature Areas. Includes Transmission and Engine Oil Cooler, and Larger Capacity Radiator with K06 Fan	A*	A*	A*

EXTERIOR STYLING

Headlamps, Composite Halogen	S	S	S
Lower Body Accent Color—Medium Gray Metallic			S
Lower Body Aero Rocker Moldings in Medium Gray Metallic or Platinum Metallic Trim			S
Mirrors, Color-Coordinated Outside—Driver Side, Remote Control—Passenger Side, Manual	S		
Moldings, Body Side with Bright Inserts or Gray Trim	S	S	
Moldings, Wheel-Opening and Black/Bright Window Reveal	S	S	S
Specific Black Grille and Moldings, plus Low-Perimeter Accent Paint Stripes			S
Specific Front and Rear Fascias			S
Windows, Soft-Ray Tinted Glass, Flush-Mounted	S	S	S
D67 Mirrors, Black, Electrically Operated Outside—Driver and Passenger Side	A	A*	A*
D68 Mirrors, Color-Coordinated Outside—Driver and Passenger Side, Remote Control	A	S	S
212 Package, Functional and Appearance—includes Color-Coordinated Moldings, Body Side and Door-Edge Guard	A	A	A

INTERIOR FEATURES

Armrest, Rear Center		S	S
Defogger, Side Window	S	S	S
Flash-to-Pass Feature on Turn-Signal Control, with Turn-Signal-On Reminder Chime	S	S	S

S=Standard equipment A=Available equipment *Also available in an option package
†Available only when other options are added/deleted. See your dealer for details.

Front Door Map Storage Pockets and Package Shelf Storage Compartment	S	S	
Full Lighting of All Controls	S	S	S
Headlamp-On Reminder	S	S	S
Hood Release, Interior Operated	S	S	S
Instrument Panel—with Electronic Speedometer, digital bar graph Fuel Gage, Odometer and Trip Odometer	S	S	
UB3 Cluster, Instrument Panel Rallye—Vacuum Fluorescent Electronic Instrument Cluster with Analog and Digital Speedometer with Trip and Main Odometer, Electronic Analog Fuel Gage, Oil Pressure, Coolant Temperature, Voltmeter, plus indicators for Low Fuel, Oil Pressure, High Engine Temperature and Electronic Analog Tachometer	A	A	S
Lamp, Stop—High-Center-Mounted	S	S	S
Lamps, Courtesy, Glove Box, Instrument Panel and Ashtray	S	S	S
Operating Console with Armrest and Storage	A	A	S
Upward Opening Glove Box Door with Dual Compartment and Cup Holder	S	S	S
Radio, Delco ETR AM/FM Stereo with Seek-Scan and Digital Display Clock—includes 4-Speaker Sound System	S	S	S
UN6 Radio, Delco ETR AM/FM Stereo with Seek-Scan, Auto-Reverse Cassette with Music Search and Digital Display Clock—includes Dual Rear Speakers with Extended Range	A	A	A
UT6 Radio, Delco ETR AM/FM Stereo with Seek-Scan, Auto-Reverse Cassette with Music Search, Graphic Equalizer and Digital Display Clock—includes Dual Rear Speakers with Extended Range	A	A	A
UW4 Speakers, Dimensional Sound System—6 Speakers	A	A	A
U75 Antenna, Power Rear Quarter—Bright	A	A	A

SEATING AND TRIMS

Seat, Custom Bench Front with Center Armrest	S		
AM6 Seat, 55/45 Divided Bench with Reclining Seat Back—Driver and Passenger with Front Dual Controls	A	S	
Seat, Front Contoured Bucket with 4-Way Power Articulation and 4-Way Manual Seat Adjuster			S
Seat, Individual Rear Buckets with Deluxe Folding Console with Cup Holder and Storage	A*	A*	A*
AC3 Seat Adjuster, 6-Way Power Bucket Seat—Driver Side	A*	A*	
AG1 Seat Adjuster, 6-Way Divided Bench Seat—Driver Side	A*	A*	
WJ7 Trim, Custom Leather in Seating Areas—includes Steering Wheel, Leather-Wrapped		A	

COMFORT/CONVENIENCE FEATURES

Air Conditioner, Four-Season	A	A	S
Safety Belts, Automatic Front	S	S	S
Steering Wheel, Custom 2-Spoke Style	S	S	
Steering Wheel, Leather-Wrapped with Tilt-Away features			S
Wiper System, Wet-Arm	S	S	S
AU3 Door Locks, Power	A*	A*	A*
A31 Windows, Power	A*	A*	A*
B3R Interior Sport Package—includes Reclining Bucket Seat, Easy-Entry Passenger Side, Console, with Floor Shifter and Steering Wheel, Leather-Wrapped	A*	A*	
B34 Floor Mats, Auxiliary Front Carpet	A*	A*	A*
B35 Floor Mats, Auxiliary Rear Carpet	A*	A*	A*
CD4 Wiper System, Pulse	A*	A*	S
C49 Defogger, Electric Rear Window	A	A	A
K34 Cruise Control, Electronic with Resume and Acceleration features	A*	A*	A*
N33 Steering Wheel, Tilt-Away	A*	A*	S
TR9 Convenience Group, includes Under-Hood, Trunk, Interior Quarter Upper Courtesy with Reading Lamps; Visor Vanity Mirror; Inside Day/Night Mirror with Dual Reading and Courtesy Lamps	A*	S	S
V56 Luggage, Rear Deck Lid—Black—includes High Level Stop Lamp	A	A	A

a=Tree chains should not be used on International Series equipped with P215/65R15 tires, because they may cause damage to the vehicle.

AFFORDABLE NEW OPTION PACKAGES TO PERSONALIZE YOUR NEW CUTLASS SUPREME.

CUTLASS SUPREME OPTION PACKAGES

(All Orders must include only ONE Option Package)

K34 Cruise Control, Electronic with Resume and Acceleration features

N33 Steering Wheel, Tilt-Away

B34 Floor Mats, Auxiliary Front Carpet

B35 Floor Mats, Auxiliary Rear Carpet

CD4 Wiper System, Pulse

A31 Windows, Power Side

AU3 Door Locks, Power

TR9 Convenience Group—includes Under-Hood, Trunk and Interior Courtesy Lamps and Visor Vanity Mirror

AC3/AG1 Seat Adjuster, 6-Way Power Driver Seat

D67 Mirrors, Color-Coordinated, Electrically Operated Outside—Driver and Passenger Side

S=Standard Equipment *With Divided Bench Seat (AG1) or Bucket Seat (AC3)

STANDARD EXTERIOR COLORS (Actual color paint chips available. See your salesperson.)

13 Platinum Metallic ●, ▲
14 Black Metallic ●, ▲
22 Light Sapphire Blue Metallic ●, ▲
27 Medium Sapphire Blue Metallic ●, ▲
40 White ●, ▲

52 Copper Beige ●
62 Light Beechwood Metallic ●, ▲
72 Medium Garnet Red Metallic ●, ▲
73 Bright Red ●, ▲
87 Medium Gray Metallic ●, ▲

Cutlass Supreme International Series paint schemes (primary color/secondary color)
13 Platinum Metallic/87 Medium Gray Metallic
14 Black Metallic/13 Platinum Metallic

14 Black Metallic/87 Medium Gray Metallic
40 White/87 Medium Gray Metallic
73 Bright Red/13 Platinum Metallic
73 Bright Red/87 Medium Gray Metallic
87 Medium Gray Metallic/13 Platinum Metallic

Note: Cutlass Supreme SL Coupe features a standard Secondary color, 87 Medium Gray Metallic, regardless of Primary color.

KEY

Cutlass Supreme ●

Cutlass Supreme SL ▲

Important—A word about this catalog: We have tried to make this catalog as comprehensive and factual as possible, and we hope you find it helpful. However, since the time of printing, some of the information you will find here may have been updated. Also, some of the equipment shown or described throughout this Olds catalog is available at extra cost. Your dealer has details; before ordering, you should be brought up-to-date. The right is reserved to make changes at any time, without notice, in prices, colors, materials, equipment, specifications and models. Check with your Olds dealer for complete information.

A word about engines: Oldsmobiles are equipped with engines produced by GM or suppliers to GM worldwide.

A word about assembly, components and optional equipment in these Oldsmobile products: The Oldsmobiles described in this catalog are assembled at facilities operated by General Motors or GM of Canada. These vehicles incorporate thousands of different components produced by car groups or various component divisions of General Motors and by various suppliers worldwide to GM. From time to time during the manufacturing process, it may be necessary, in order to meet public demand for particular vehicles or equipment, or to meet federally mandated emissions, safety and fuel economy requirements, or for other reasons, to produce Oldsmobile products with different components or differently sourced components than initially scheduled. All such components have been approved for use in Oldsmobile products and will provide the quality performance associated with the Oldsmobile name. With respect to extra-cost optional equipment, make certain you specify the type of equipment you desire on your vehicle when ordering it from your dealer. Some options may be unavailable when your car is built. Your dealer receives advice regarding current availability of options. You may ask your dealer for this information. GM also requests your dealer to advise you if the option you ordered is unavailable. We suggest that you verify that your car includes the optional equipment you ordered, or if there are changes, that they are acceptable to you.

Occupant protection features: Automatic safety belt system

for driver and right front passenger • Manual lap safety belts, center front and all rear positions • Energy-absorbing steering column • Energy-absorbing instrument panel • Energy-absorbing seat back tops, front • Laminated safety windshield glass • Safety interlocking door latches • Side-guard door beams • Passenger-guard inside door lock handles • Inertia-locking, folding front seat backs • Safety armrests • Head restraints, driver and right front passenger (adjustable).

Accident avoidance features: Side marker lights and reflectors • Parking lamps that illuminate with headlamps • Four-way hazard warning flasher • Back-up lights • Center high-mounted stop lamp • Directional signal control with lane change feature • Windshield defroster, washer and multi-speed wipers • Inside rearview mirror • Dual outside rearview mirrors • Brake system with dual master cylinder and warning light • Starter safety switch • Dual action hood latch • Low-glare finish on inside windshield moldings, wiper arms and blades, metallic steering wheel surfaces • Illuminated heater and defroster controls • Tires with built-in tread-wear indicators.

Theft-deterrence features: Audible reminder for ignition key removal • Theft-deterrent steering column lock • Visible vehicle identification number.

A word about updated service information: Oldsmobile regularly sends its dealers useful service bulletins about Oldsmobile products. Oldsmobile monitors product performance in the field. We then prepare bulletins for servicing our products better. Now you can get these bulletins, too. Ask your dealer. To get ordering information, call toll free 1-800-551-4123.

The 1988 Cutlass Supremes are carefully designed and built to resist corrosion, so the application of additional rust-proofing is neither necessary nor required. Oldsmobile's confidence in its extensive anti-corrosion protection is reflected in a new vehicle warranty which includes 6-year/100,000-mile rust-through protection. See your dealer for terms and conditions of the limited warranty.



OLDSMOBILE QUALITY.
FEEL IT.